

**SAW Filter 433.920MHz**  
**Part No: MP01062**

**Model: TA0322B**  
**Rev No: 1**

**A. MAXIMUM RATING:**

1. Input Power Level: 10dBm
2. DC voltage: 3V
3. Operating Temperature: -40°C to +125°C
4. Storage Temperature: -40°C to +125°C

**B. ELECTRICAL CHARACTERISTICS:**

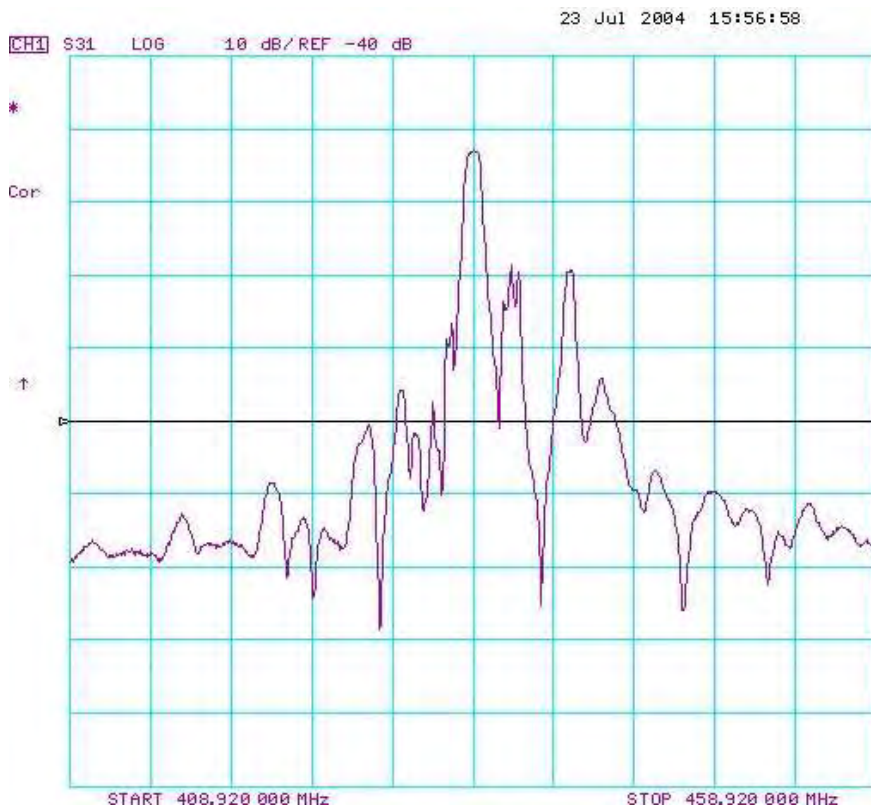
Item	Min.	Typ.	Max.	Note
Center frequency Fc (MHz)	-	433.92	-	1
Minimum IL (dB) IL min	-	3.0	4.5	
Pass band (relative to IL min) 433.67 ~ 434.17MHz (dB)	-	0.7	3.0	1
Pass bandwidth (relative to IL min) BW3 (kHz)	500	950	-	
Attenuation: (relative to IL min) (dB)				
410 ~ 412.52MHz (dB)	47	52	-	
412.52 ~ 423.22MHz (dB)	40	45	-	
423.22 ~ 432.92MHz (dB)	15	22	-	1
434.92 ~ 444.62MHz (dB)	10	15	-	
444.62 ~ 455.32MHz (dB)	38	43	-	
455.32 ~ 1000MHz (dB)	43	48	-	
Impedance at Fc; Input $Z_{IN} = R_{IN} // C_{IN}$  Output $Z_{OUT} = R_{OUT} // C_{OUT}$	865Ω // 2.5pF  865Ω // 2.5pF			
Turnover To (deg. C)				

Note 1. The standard definitions is in JIS C 6703

**SAW Filter 433.920MHz**  
**Part No: MP01062**

**Model: TA0322B**  
**Rev No: 1**

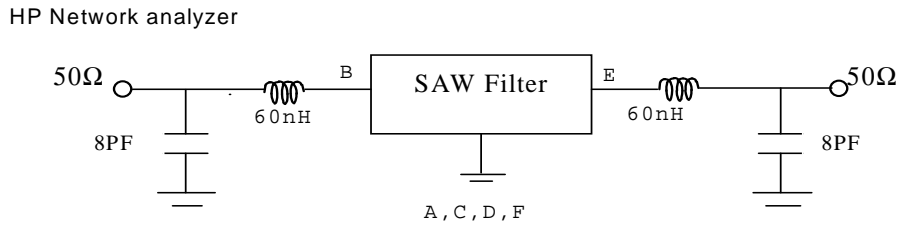
**C. FREQUENCY CHARACTERISTICS:**



**SAW Filter 433.920MHz**  
**Part No: MP01062**

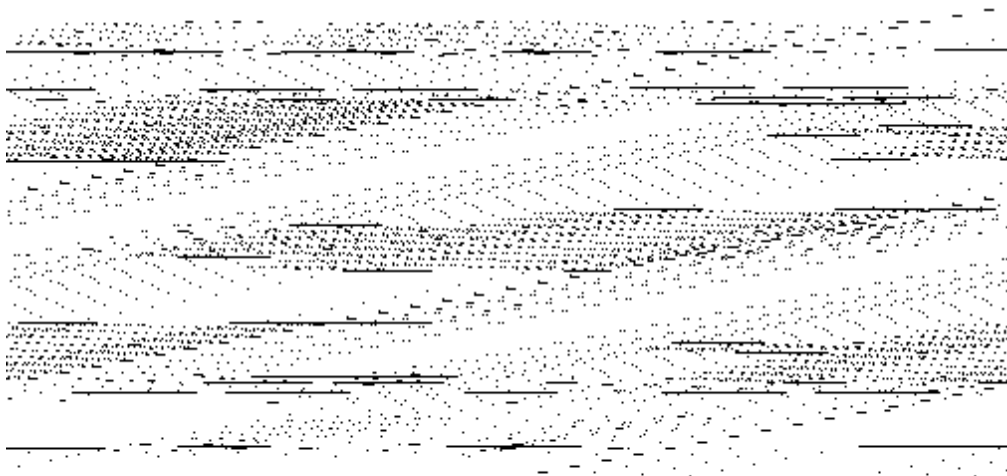
**Model: TA0322B**  
**Rev No: 1**

**D. MEASUREMENT CIRCUIT:**



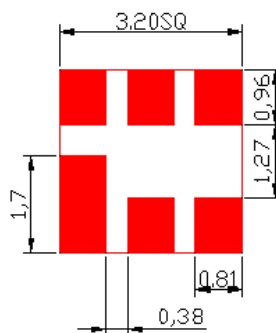
Matching inductance: from Coilcraft

**E. OUTLINE DRAWING:**



B: Input  
 E: Output  
 A, C, D, F: Ground  
 Unit: mm

**F. PCB FOOTPRINT:**

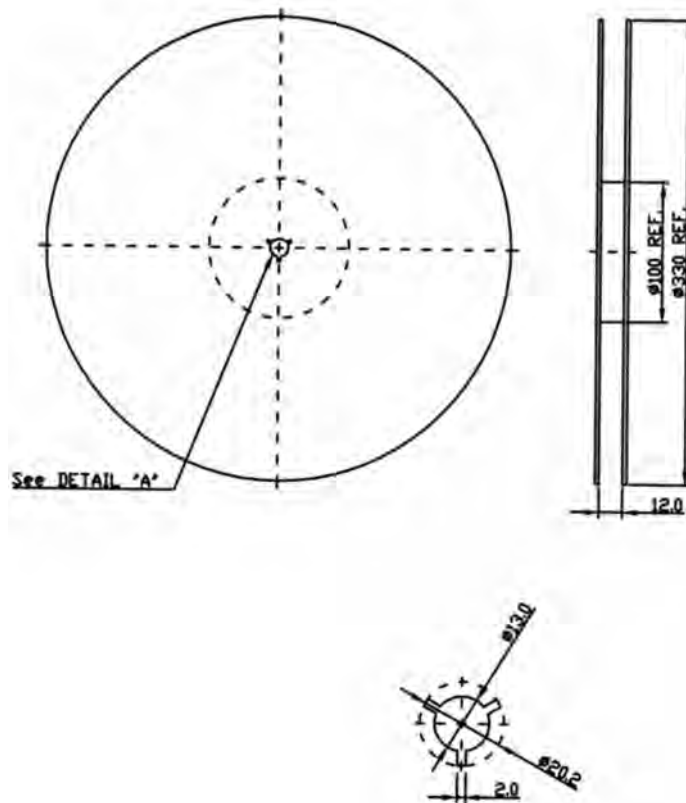


**SAW Filter 433.920MHz**  
**Part No: MP01062**

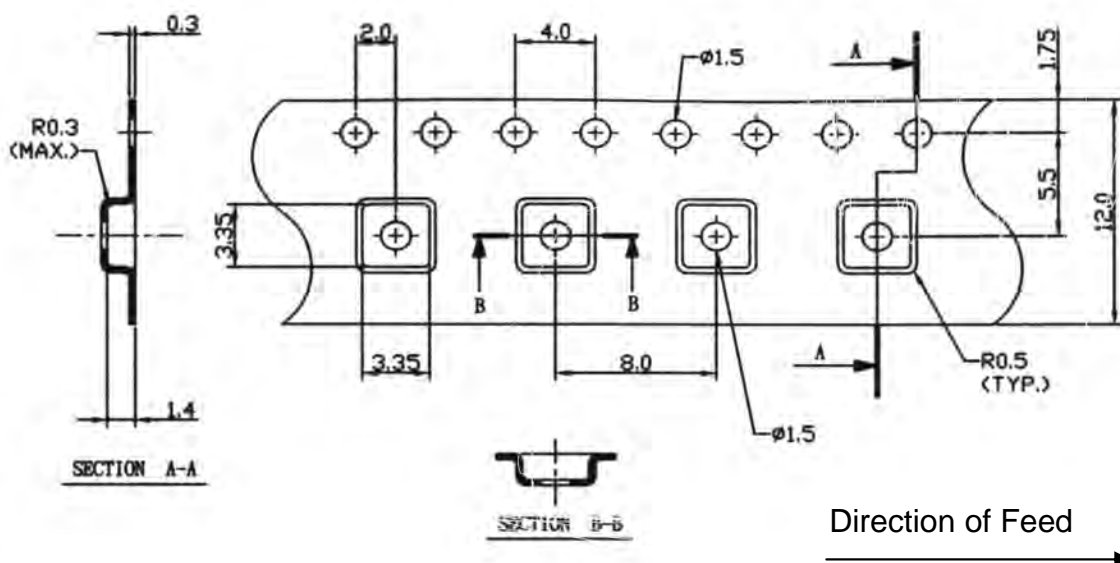
**Model: TA0322B**  
**Rev No: 1**

**G. PACKING:**

1. REEL DIMENSION



2. TAPE DIMENSION



**SAW Filter 433.920MHz**  
**Part No: MP01062**

**Model: TA0322B**  
**Rev No: 1**

**H. RECOMMENDED REFLOW PROFILE:**

