

SAW Filter 1330MHz
Part No: MA09943

Model: TA0566A
Rev No: 1

A. MAXIMUM RATING:

1. Input Power Level: 10dBm
2. DC voltage: 5V
3. Operating Temperature: -25°C to 85°C
4. Storage Temperature: -40°C to +85°C

B. CHARACTERISTICS:

Item	Unit	Min.	Typ.	Max.
Center Frequency Fc	MHz	-	1330	-
Insertion Loss 1326 ~ 1334MHz	dB	-	3.5	4.6
Absolute Group delay 1330MHz	ns		35	60
Group delay variation Fc ± 4MHz	ns		12	43
Phase variation Fc ± 4MHz	Deg		55	85
Amplitude ripple (p-p) Fc ± 4MHz	dB		1.0	2.0
Rejection (referent to IL)				
Fc -30MHz	dB	8	25	-
Fc +30MHz	dB	7	25	-
Fc -60MHz	dB	30	40	-
Fc +60MHz	dB	30	35	-
Fc -140MHz	dB	30	39	-
Fc +140MHz	dB	30	39	-
Fc -250MHz	dB	35	39	-
Fc +250MHz	dB	35	40	-

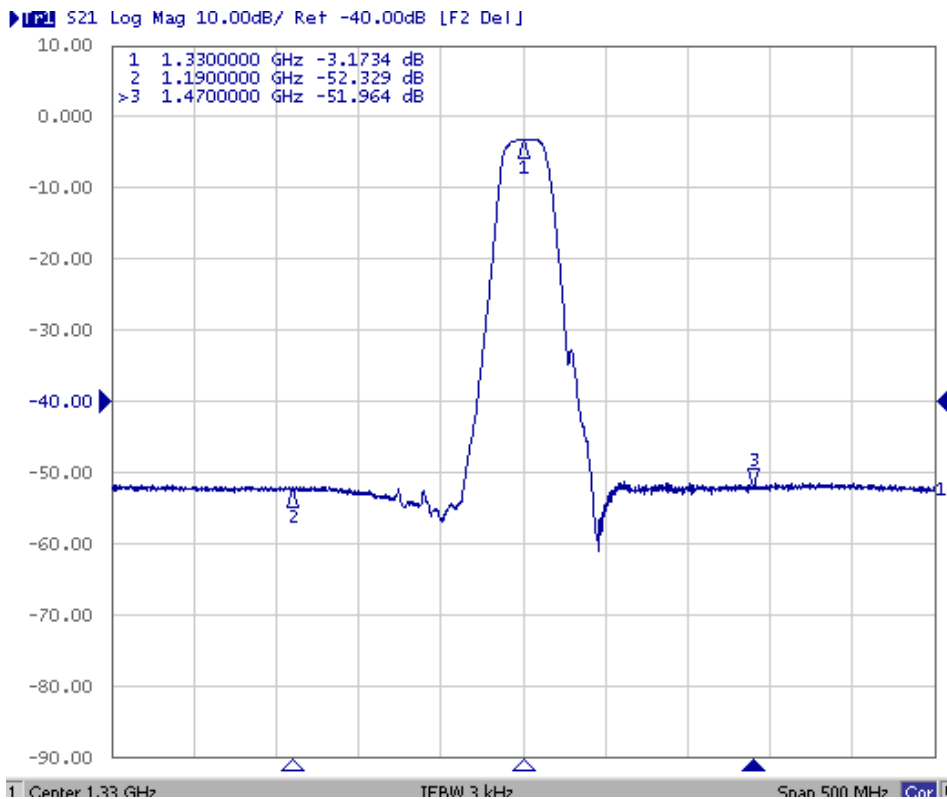
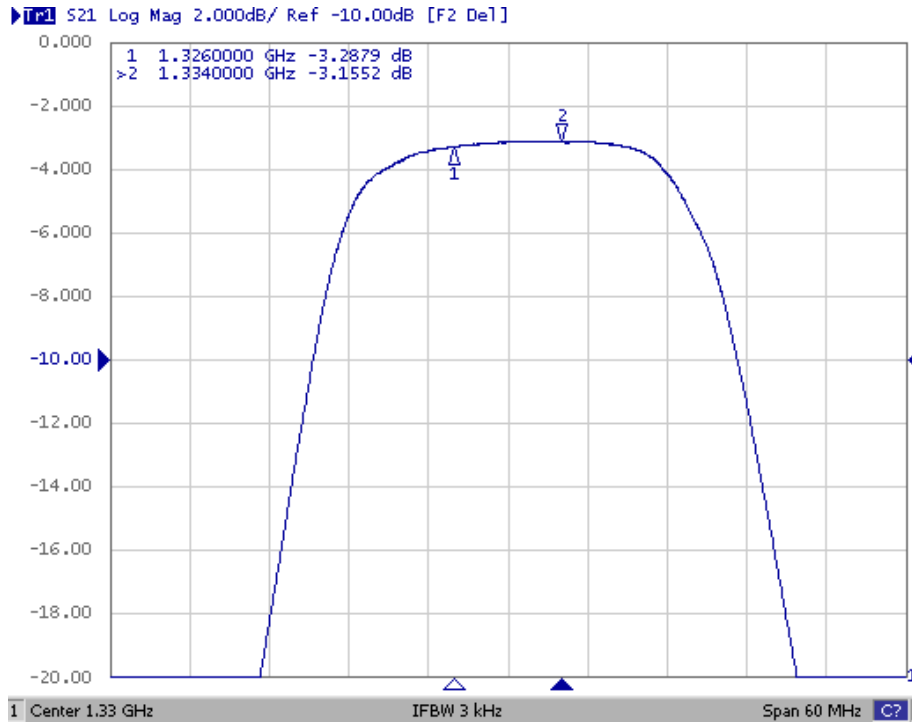
Note: No matching network required for operation at 50Ω

SAW Filter 1330MHz
Part No: MA09943

Model: TA0566A
Rev No: 1

C. FREQUENCY CHARACTERISTICS:

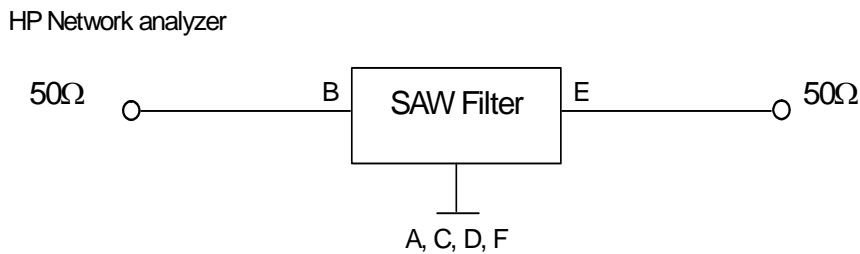
Transfer Function



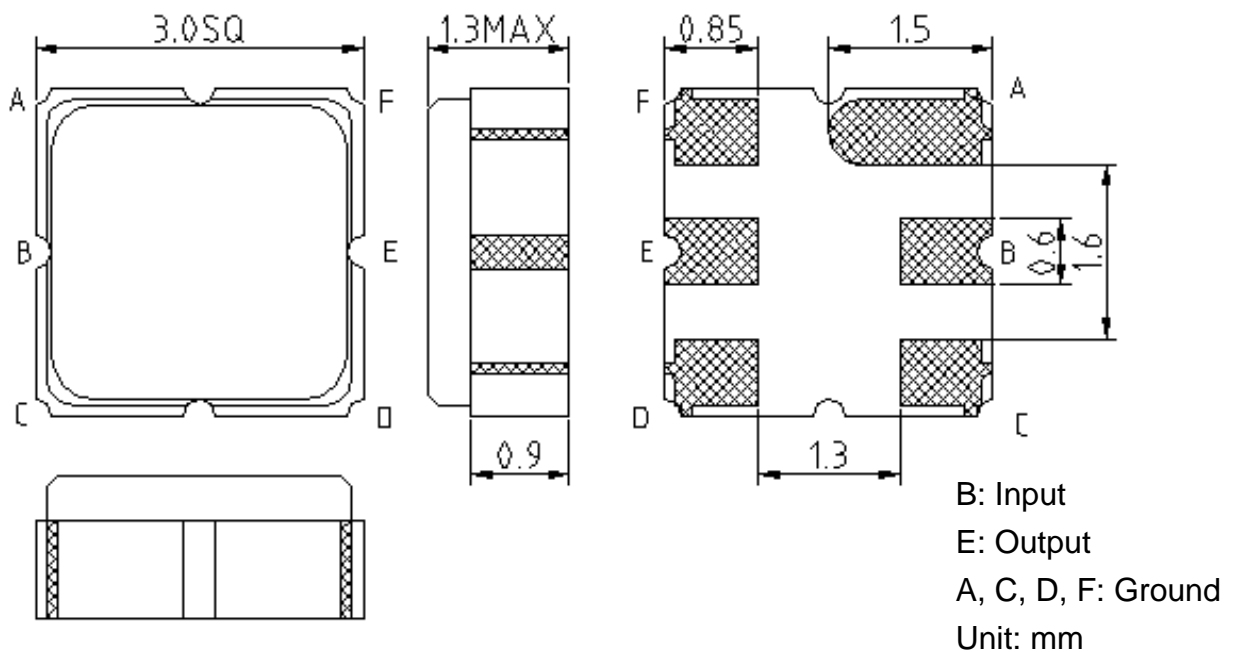
SAW Filter 1330MHz
Part No: MA09943

Model: TA0566A
Rev No: 1

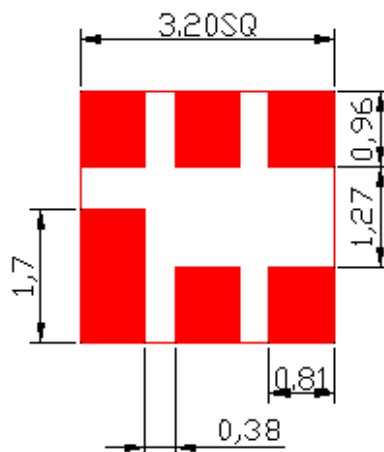
D. MEASUREMENT CIRCUIT:



E. OUTLINE DRAWING:



F. PCB FOOTPRINT:

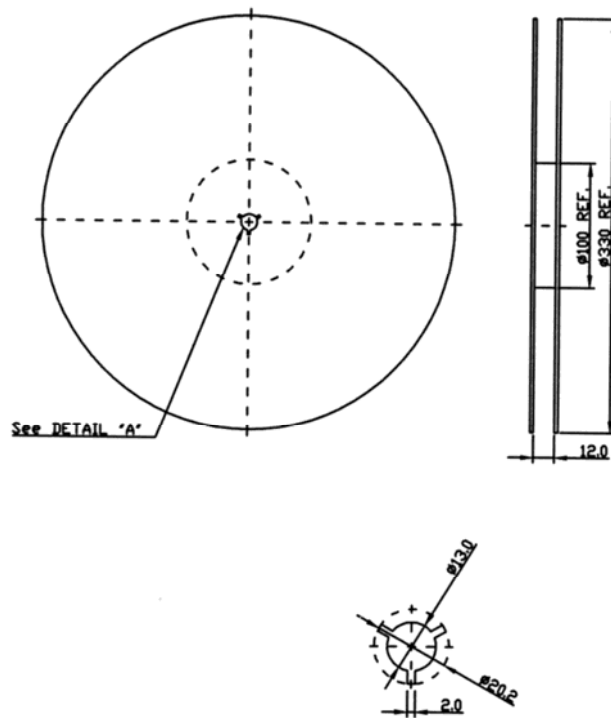


SAW Filter 1330MHz
Part No: MA09943

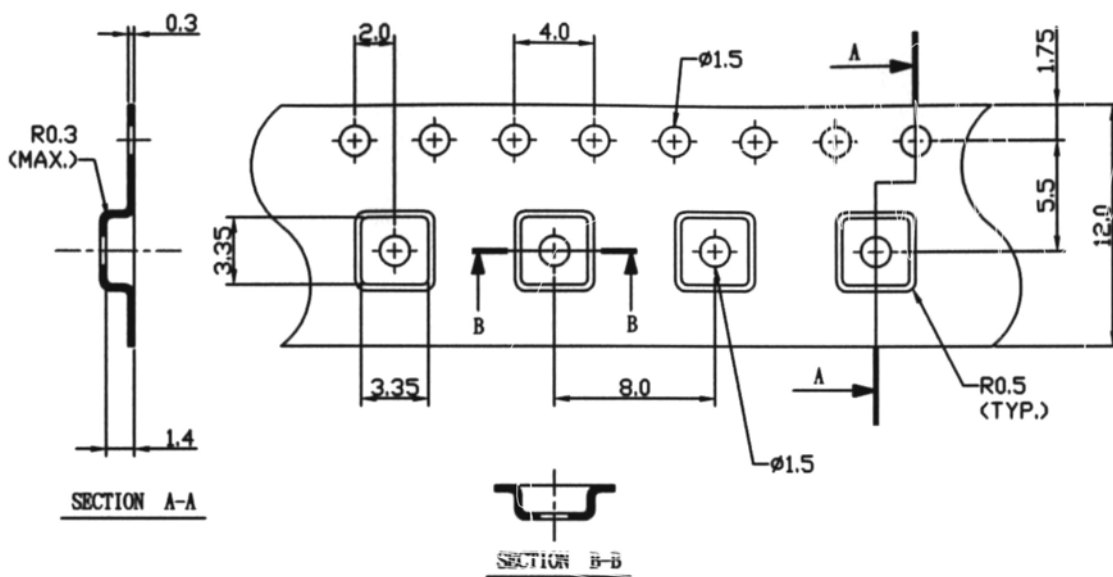
Model: TA0566A
Rev No: 1

G. PACKING:

1. Reel Dimension



2. Tape Dimension



SAW Filter 1330MHz
Part No: MA09943

Model: TA0566A
Rev No: 1

H. RECOMMENDED REFLOW PROFILE:

