

**70MHz SAW Filter**

**Model: TB0505A**

**Part No: MA09489**

**REV NO.: 1**

**A. MAXIMUM RATING:**

1. Input Power Level: 10dBm
2. DC Voltage: 5V
3. Operating Temperature: -10°C to 60°C
4. Storage Temperature: -40°C to 85°C

**B. ELECTRICAL CHARACTERISTICS: (Ambient temperature: 25°C)**

Item	Unit	Min.	Type.	Max.	Note
Center frequency, Fc	MHz	69.955	70	70.044	-
Insertion Loss, IL	dB	-	3.2	6	-
3dB bandwidth	dB	0.03	0.05	-	-
40dB bandwidth	dB	-	0.14	0.2	-
Absolute Group Delay at Fc	μ s	-	16	-	-
Group Delay Variation (70±0.015 MHz)	μ s	-	6	12	-
Attenuation:(Reference level from Min IL)					
0.3MHz ~ 69.8MHz	dB	48	58	-	-
70.2MHz ~ 71MHz	dB	35	43	-	-
71MHz ~ 71.5MHz	dB	35	45	-	-
71.5MHz ~ 75MHz	dB	45	48	-	-
Temperature coefficient of frequency	TCF	-0.032 ppm/C <sup>2</sup>			

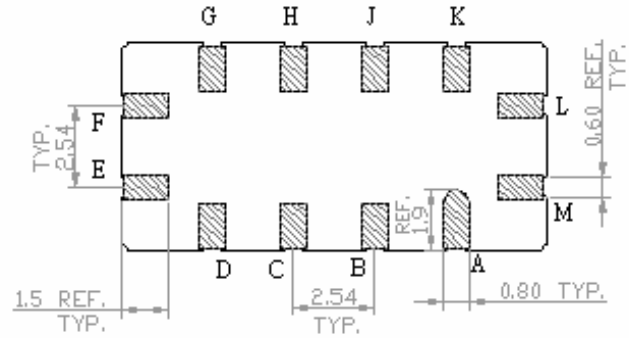
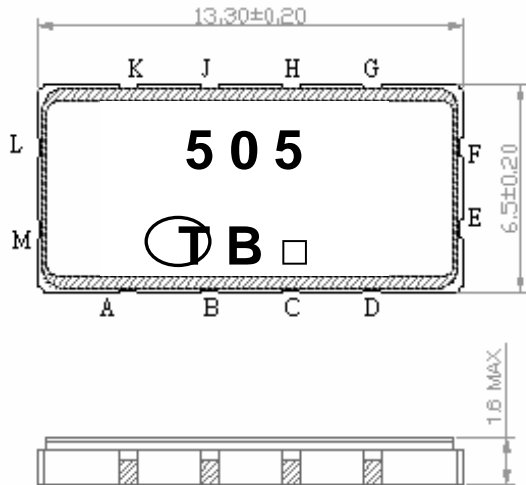
**70MHz SAW Filter**

**Model: TB0505A**

**Part No: MA09489**

**REV NO.: 1**

**C. OUTLINE DRAWING:**

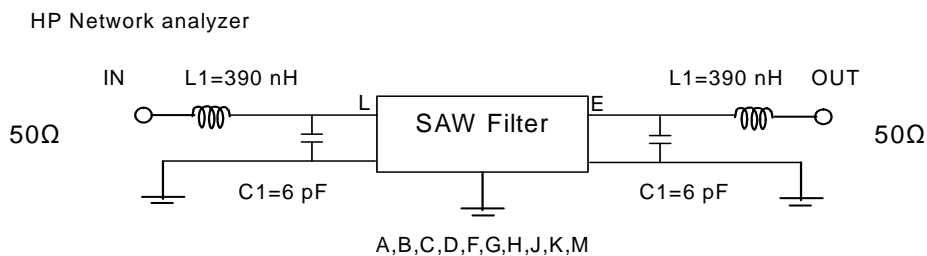


**Pin configuration**

- #L Input
  - #M Input RF-Return
  - #E Output
  - #F Output RF-Return
  - #A,B,C,D,G,H,J,K To be grounded
  - Date code
- Unit mm

**D. MEASUREMENT CIRCUIT:**

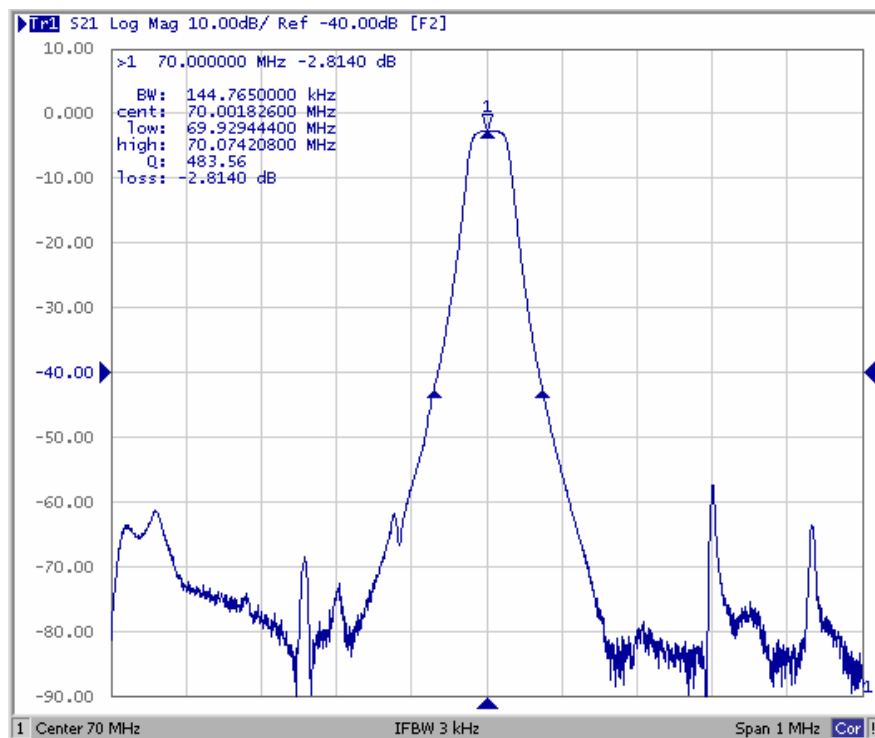
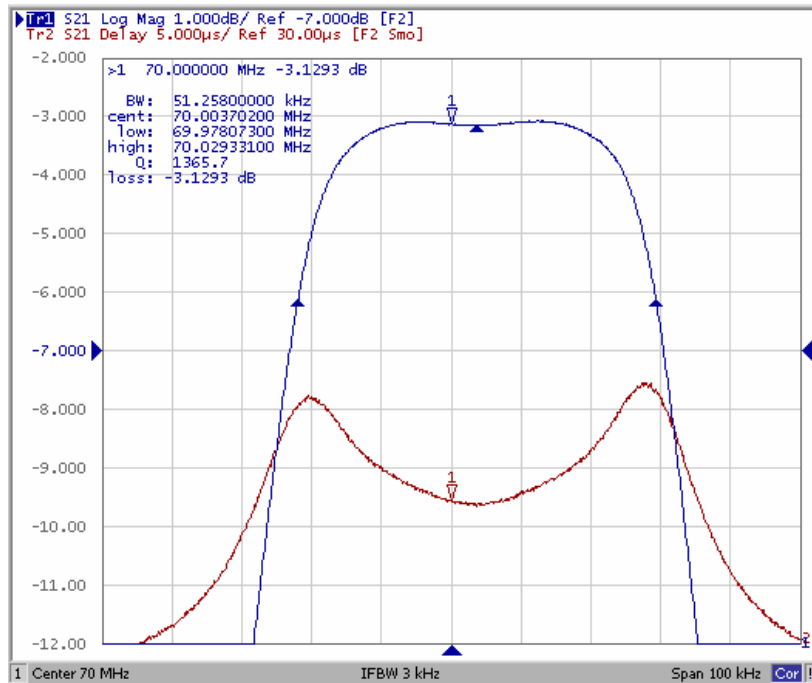
**50 Ohm Test circuit (single-ended/single-ended)**



**70MHz SAW Filter**  
**Part No: MA09489**

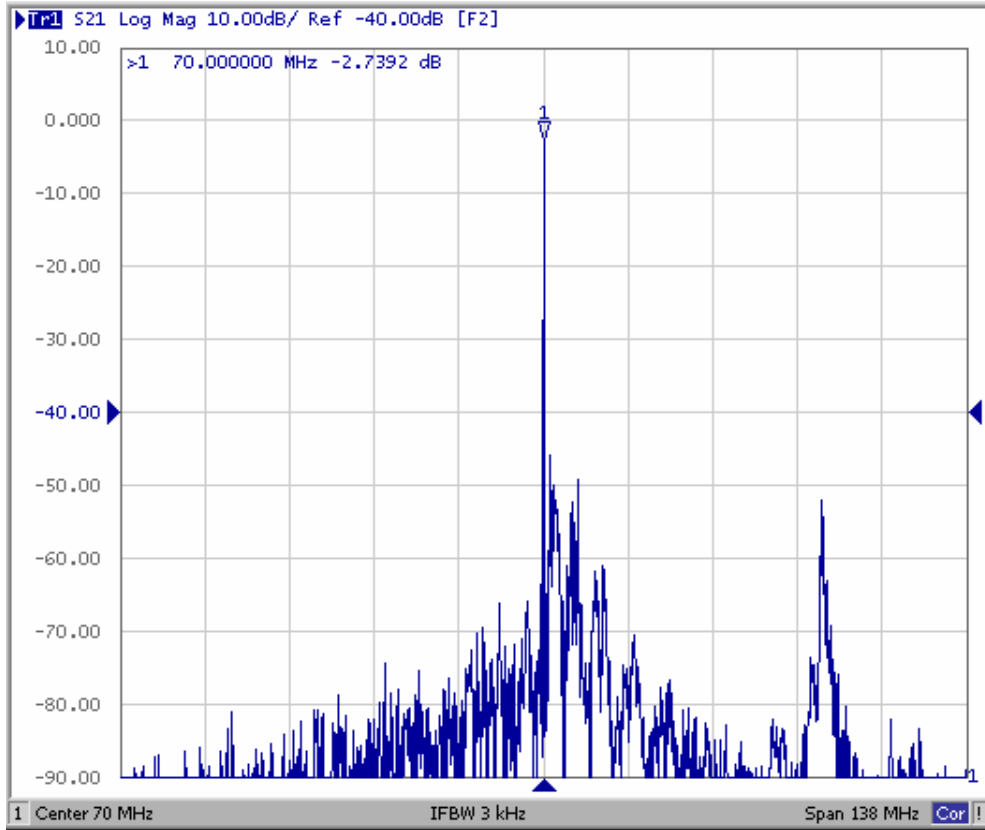
**Model: TB0505A**  
**REV NO.: 1**

**E. FREQUENCY CHARACTERISTICS:**

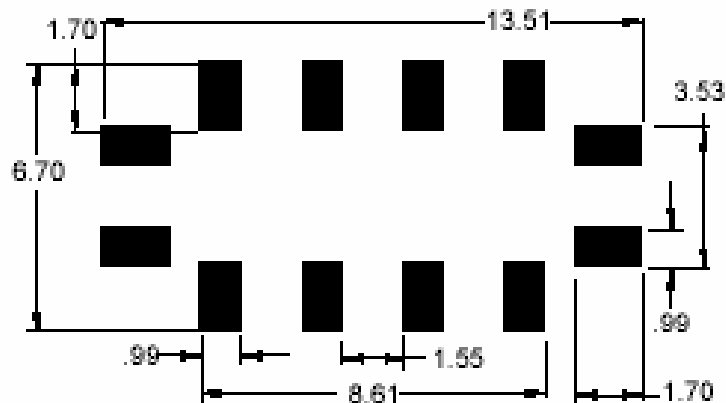


**70MHz SAW Filter**  
**Part No: MA09489**

**Model: TB0505A**  
**REV NO.: 1**



**F. PCB FOOTPRINT:**

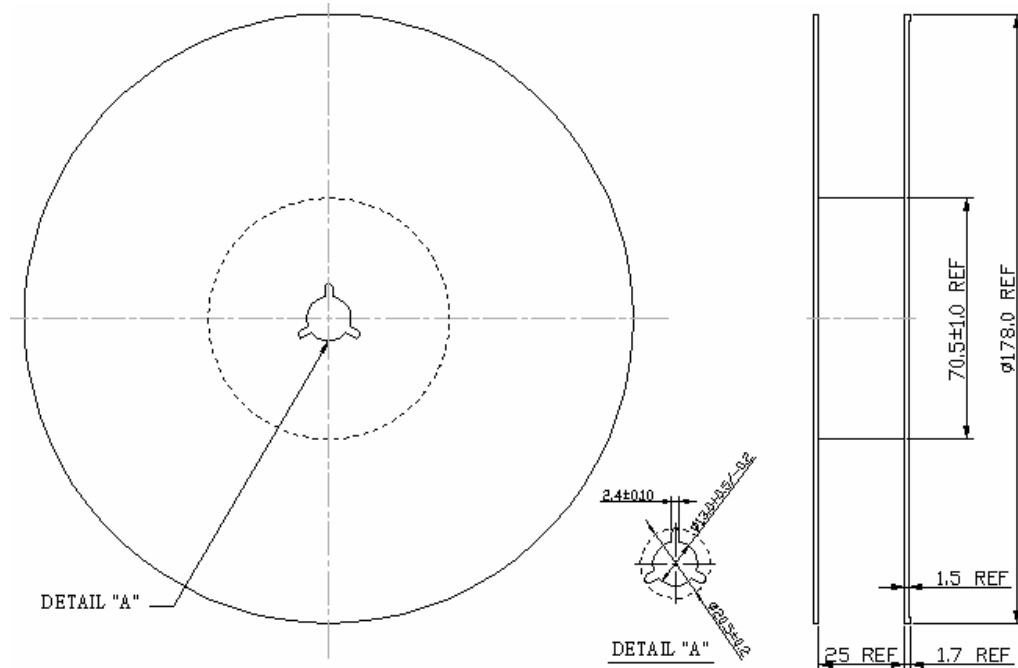


**70MHz SAW Filter**  
**Part No: MA09489**

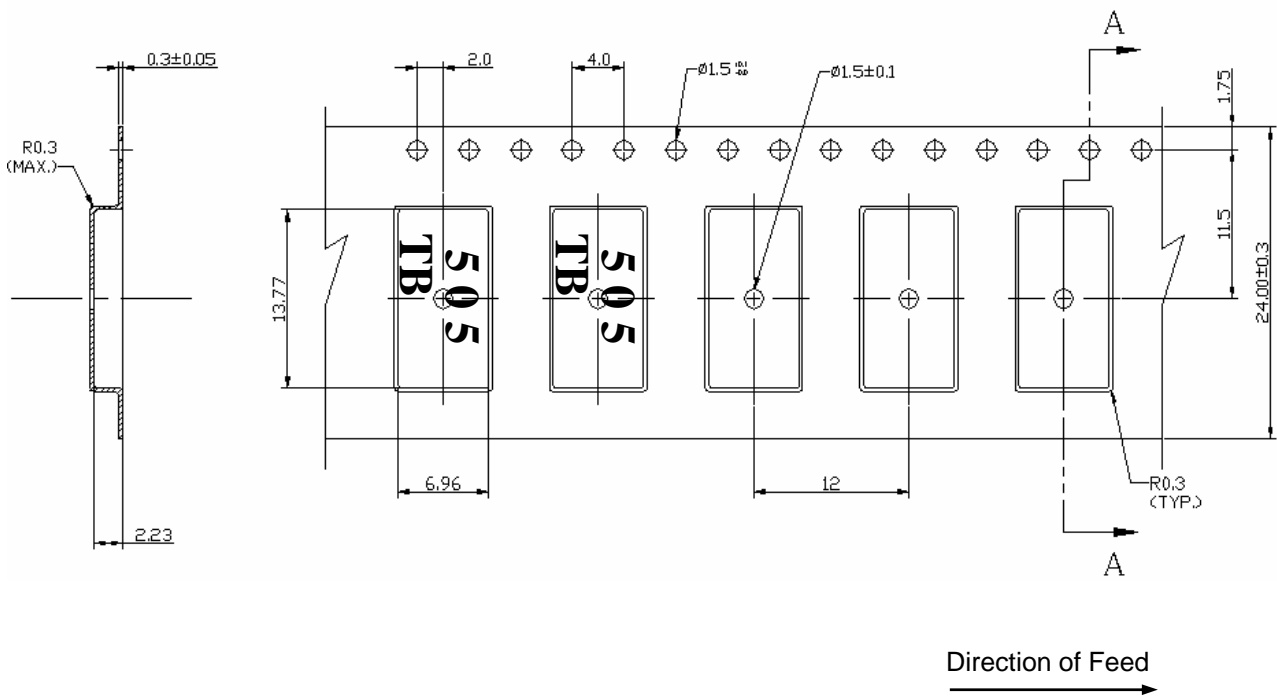
**Model: TB0505A**  
**REV NO.: 1**

**G. PACKING:**

**1. REEL DIMENSION**



**2. TAPE DIMENSION**



**70MHz SAW Filter**

**Model: TB0505A**

**Part No: MA09489**

**REV NO.: 1**

**H. RECOMMENDED REFLOW PROFILE:**

