

433.920MHz SAW Filter

Model: **TA0649A**

Part No: **MA09182**

REV NO.: 2

A. MAXIMUM RATING:

1. Input Power Level: 10 dBm
2. DC voltage: 3 V
3. Operating Temperature: -10°C to 60°C
4. Storage Temperature: -40°C to +85° C

B. CHARACTERISTICS:

Item	Unit	Min.	Typical	Max.
Center frequency Fc	MH	-	433.92	-
Insertion loss 433.00 ~ 434.71 MHz IL	dB	-	2.0	2.7
Amplitude ripple 433.00 ~ 434.71 MHz	dB	-	0.3	1.3
Attenuation (Reference level from 0 dB)				
389.0 ~ 392.0 MHz	dB	42	54	-
411.0 ~ 414.0 MHz	dB	40	50	-
454.0 ~ 457.0 MHz	dB	40	51	-
475.5 ~ 478.5 MHz	dB	42	52	-
Source impedance Zs	Ω	-	50	-
Load impedance ZL	Ω	-	50	-

Note1. No matching network required for operation at 50Ω

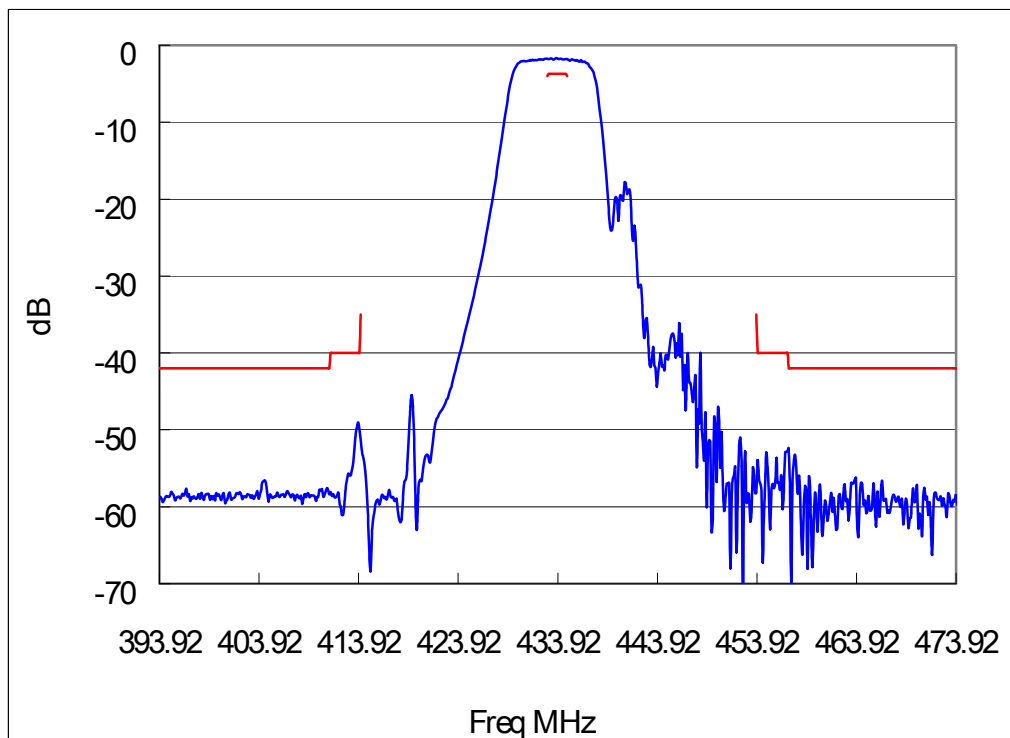
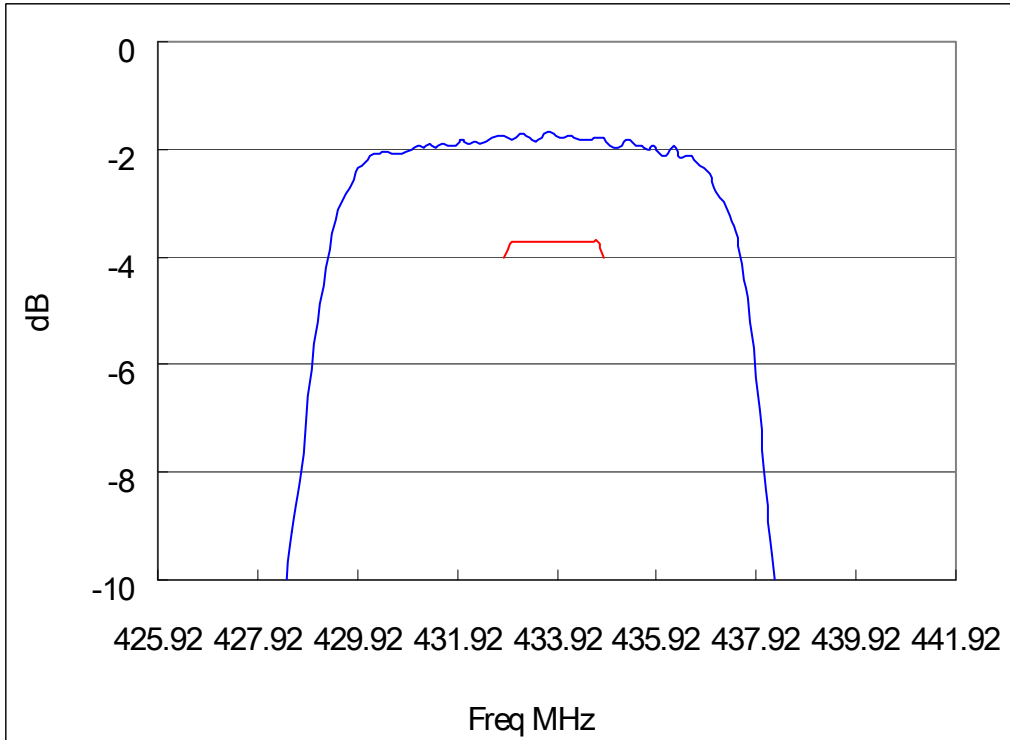
433.920MHz SAW Filter

Model: TA0649A

Part No: MA09182

REV NO.: 2

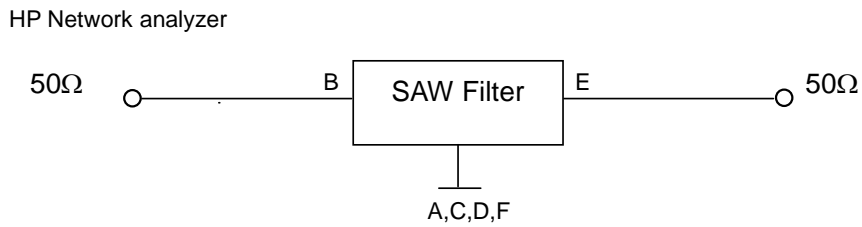
C. TRANSFER FUNCTION:



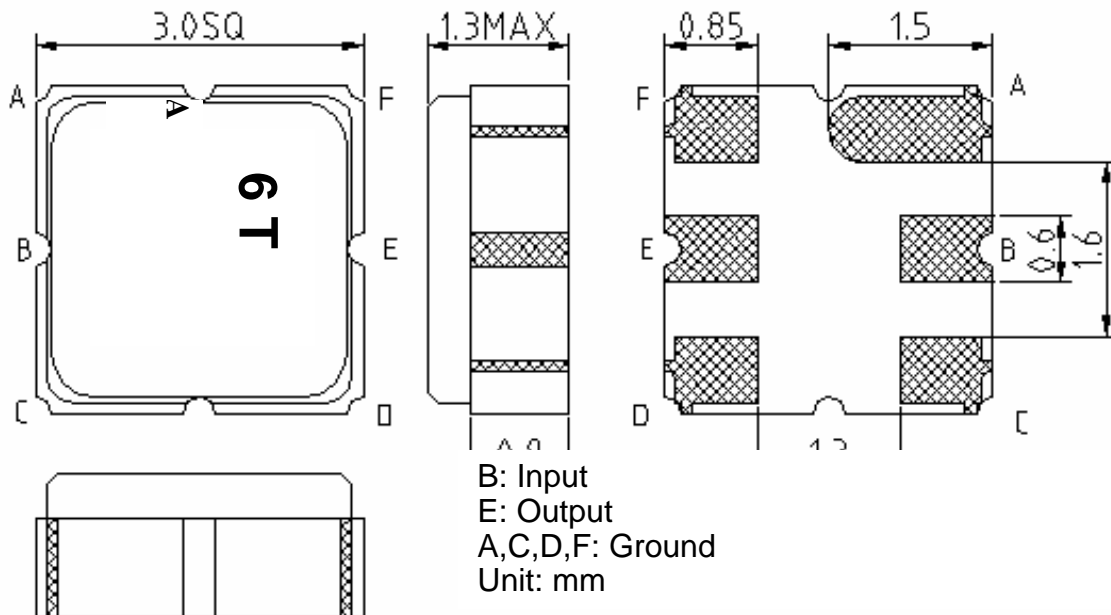
433.920MHz SAW Filter
Part No: MA09182

Model: TA0649A
REV NO.: 2

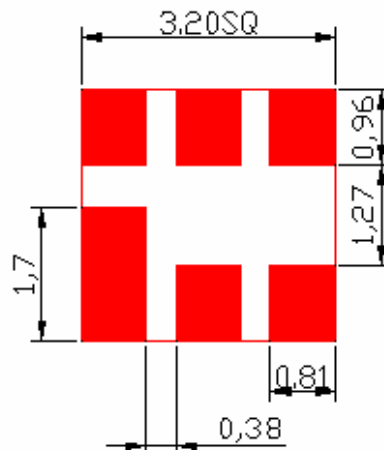
D. MEASUREMENT CIRCUIT:



E. OUTLINE DRAWING:



F. PCB FOOTPRINT:



433.920MHz SAW Filter

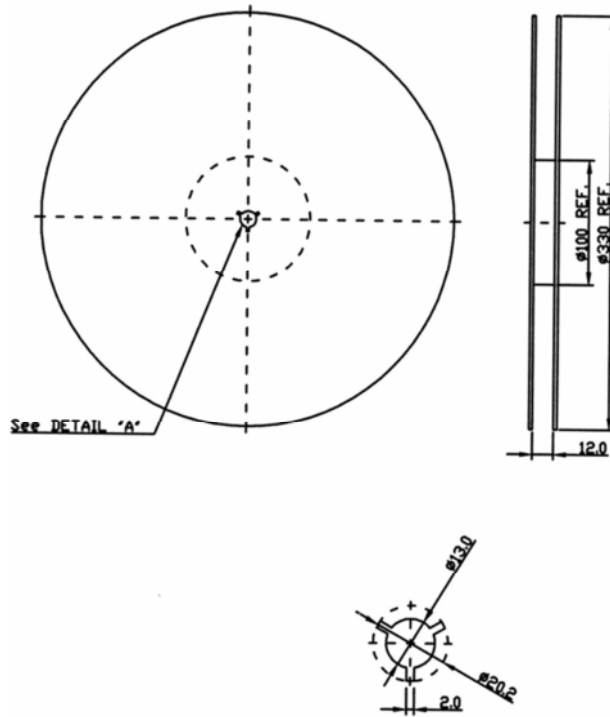
Model: TA0649A

Part No: MA09182

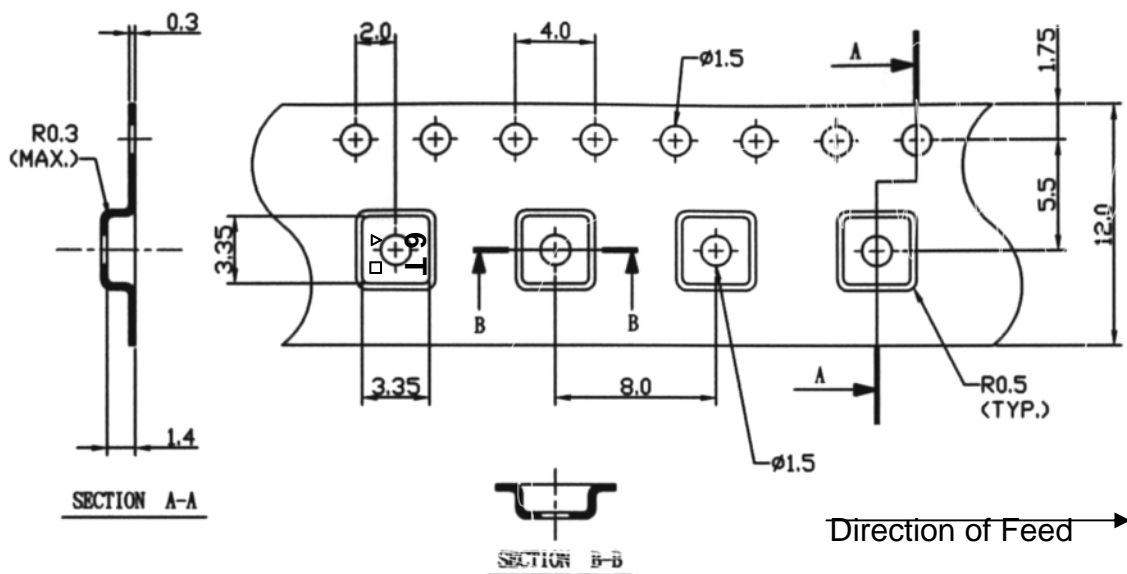
REV NO.: 2

G. PACKING:

1. REEL DIMENSION



2. TAPE DIMENSION



433.920MHz SAW Filter

Model: TA0649A

Part No: MA09182

REV NO.: 2

H. RECOMMENDED REFLOW PROFILE:

