

73.1250MHz SAW Filter

Model: TB0259A

Part No: MA09051

REV NO.: 1

A. MAXIMUM RATING:

1. Input Power Level: 15 dBm
2. DC Voltage : 5V
3. Operating Temperature: -30°C to 85°C
4. Storage Temperature: -40°C to 100°C

B. ELECTRICAL CHARACTERISTICS:

Item	Unit	Min.	Type.	Max.	Note
Center frequency, Fc	MHz	-	73.125	-	-
Insertion Loss at Fc (-30 to +85°C) IL	dB	-	3	8	-
Insertion Loss at Fc (-10 to +65°C) IL			2.7	5.5	
Passband Ripple (Fc ±7.5KHz)	dB	-	±0.1	±0.3	-
Absolute Group Delay at Fc	μ s	-	16	25	-
Group Delay Variation (Fc ±7.5KHz), GD	μ s	-	1.5	10	-
Attenuation:(Ref level from Min IL)					
Fc - 10 to Fc - 0.095 MHz	dB	20	54	-	-
Fc - 0.095 to Fc - 0.05 MHz	dB	10	23	-	-
Fc + 0.05 to Fc + 0.095 MHz	dB	10	23	-	-
Fc + 0.095 to Fc + 10 MHz	dB	20	42	-	-

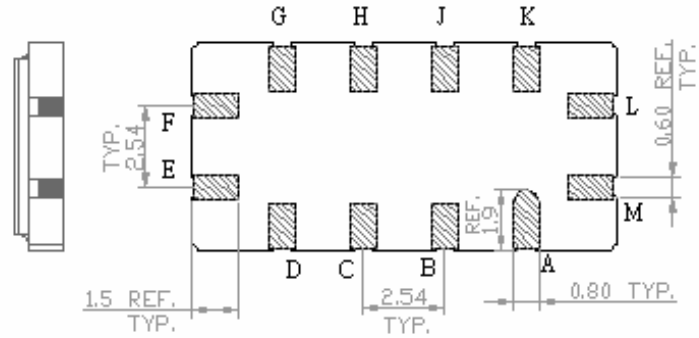
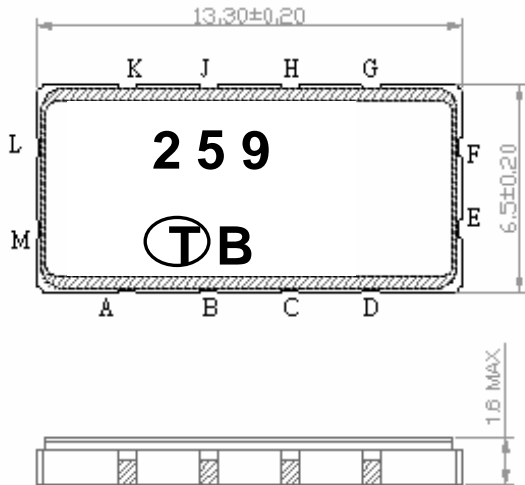
73.1250MHz SAW Filter

Model: TB0259A

Part No: MA09051

REV NO.: 1

C. OUTLINE DRAWING:

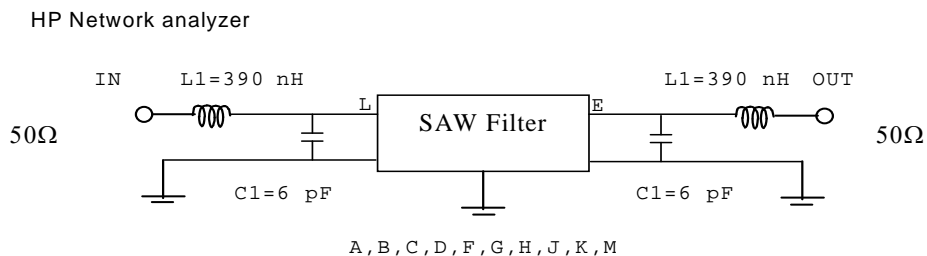


Pin configuration

- #L Input
 - #M Input RF-Return
 - #E Output
 - #F Output RF-Return
 - #A,B,C,D,G,H,J,K To be grounded
- Unit mm

D. MEASUREMENT CIRCUIT:

50 Ohm Test circuit (single-ended / single-ended)



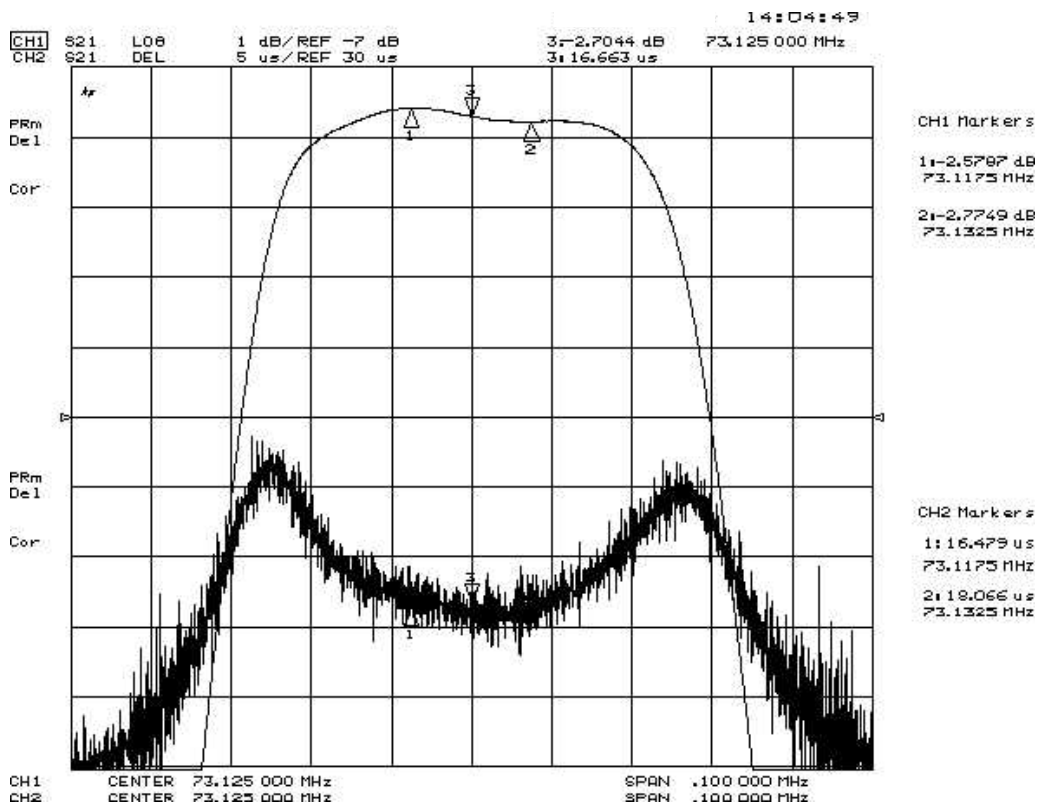
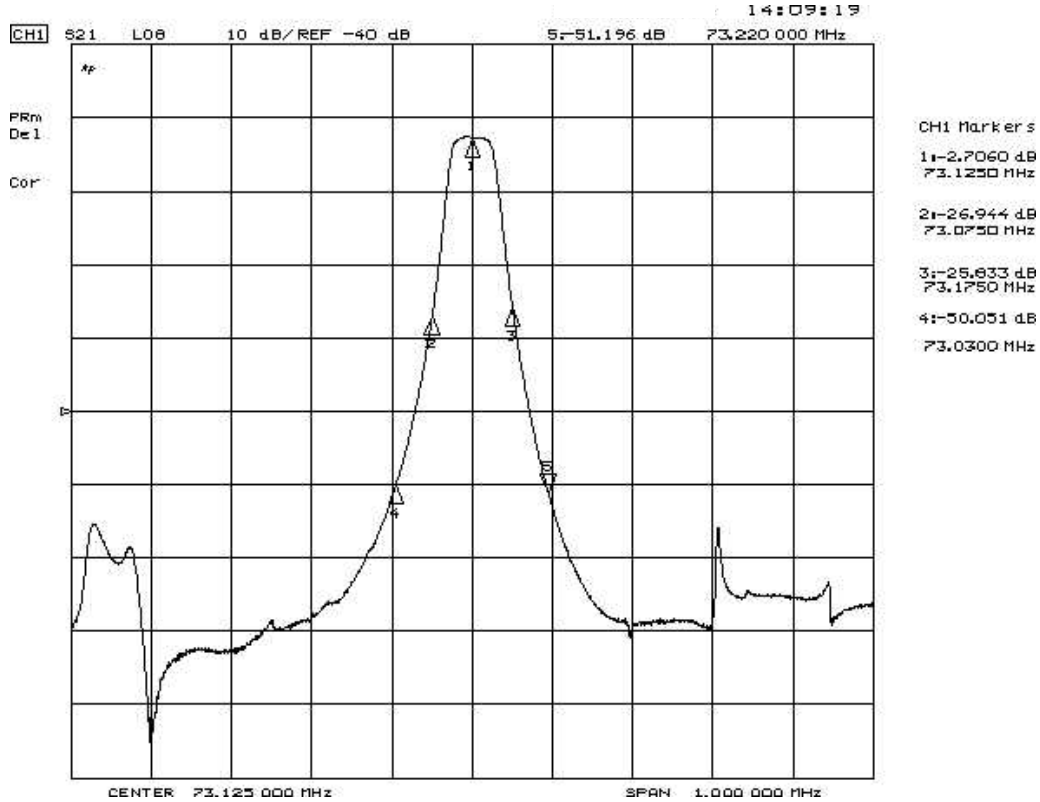
73.1250MHz SAW Filter

Model: TB0259A

Part No: MA09051

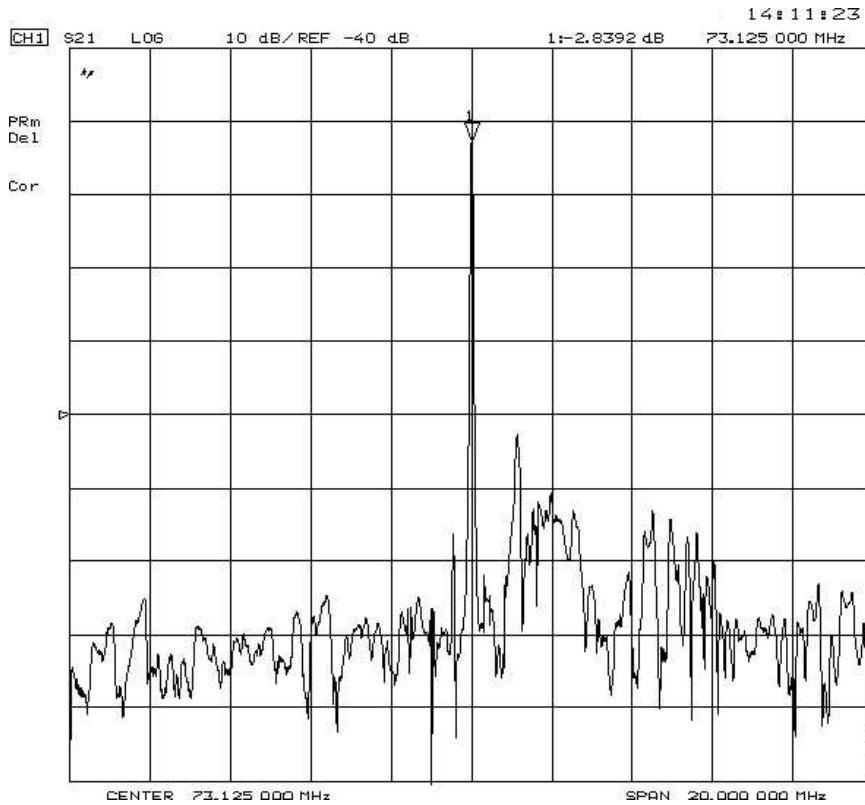
REV NO.: 1

E. FREQUENCY CHARACTERISTICS:

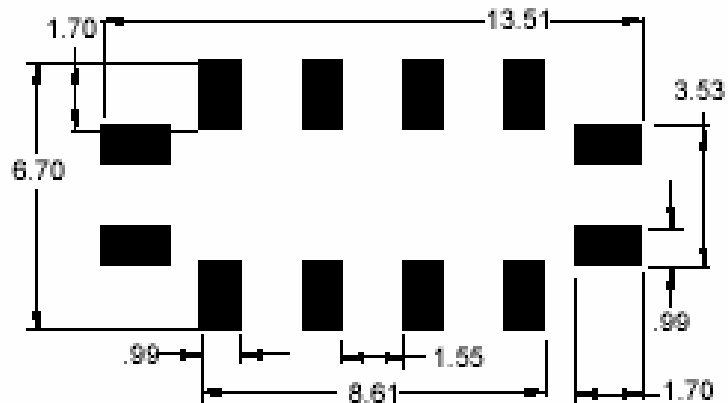


73.125MHz SAW Filter
Part No: MA09051

Model: TB0259A
REV NO.: 1



F. PCB FOOTPRINT:



73.1250MHz SAW Filter

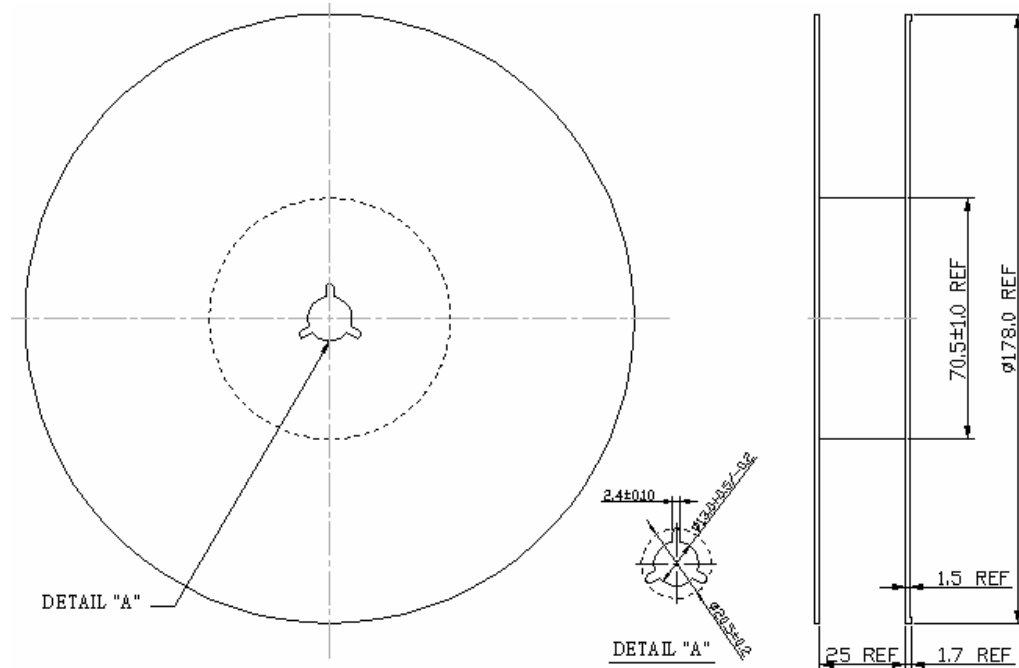
Model: TB0259A

Part No: MA09051

REV NO.: 1

G. PACKING:

1. REEL DIMENSION



2. TAPE DIMENSION

