

SAW Filter 810.0MHz
Part No: MA08625

Model: TA0424A
Rev No: 1

A. MAXIMUM RATING:

1. Input Power Level: 10dBm
2. DC voltage: 5V
3. Operating Temperature: -40°C to 85°C
4. Storage Temperature: -40°C to +85°C

B. CHARACTERISTICS:

Item	Unit	Min.	Typ.	Max.
Center frequency Fc MHz		-	810	-
Insertion loss 807.5 ~ 812.5MHz IL	dB	-	2.7	5.0
Amplitude ripple 807.5 ~ 812.5MHz	dB	-	0.5	1.8
Group delay variation 807.5 ~ 812.5MHz	ns	-	17	150
1dB Bandwidth BW -1dB	MHz	-	12	-
3dB Bandwidth BW -3dB	MHz	-	14.8	-
10dB Bandwidth BW-10dB	MHz	-	18.1	-
20dB Bandwidth BW-20dB	MHz	-	21.6	-
30dB Bandwidth BW-30dB	MHz	-	28.2	-
Attenuation (Reference level from 0dB)				
680 ~ 770MHz	dB	35	49	-
860MHz	dB	40	50	-
Temperature coefficient of frequency	ppm/K	-	-36	-
Source impedance Z _S	Ω	-	50	-
Load impedance Z _L	Ω	-	50	-

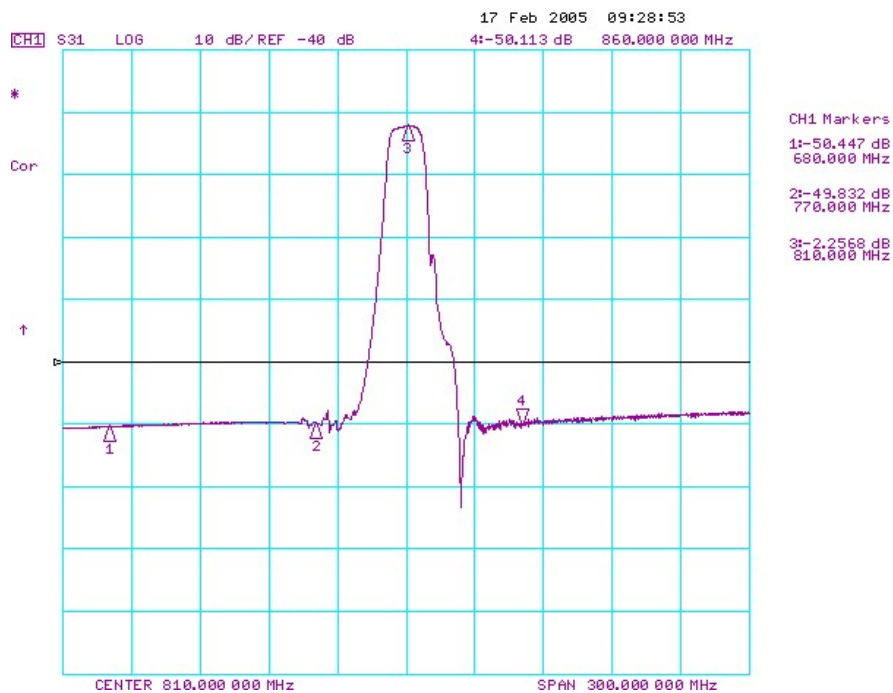
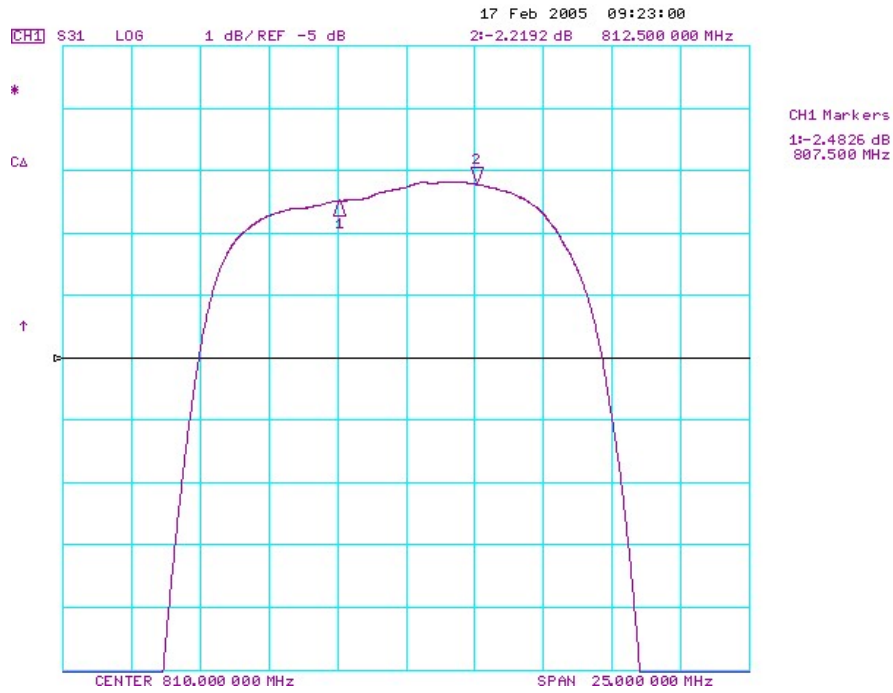
Note: No matching network required for operation at 50Ω

SAW Filter 810.0MHz
Part No: MA08625

Model: TA0424A
Rev No: 1

C. FREQUENCY CHARACTERISTICS:

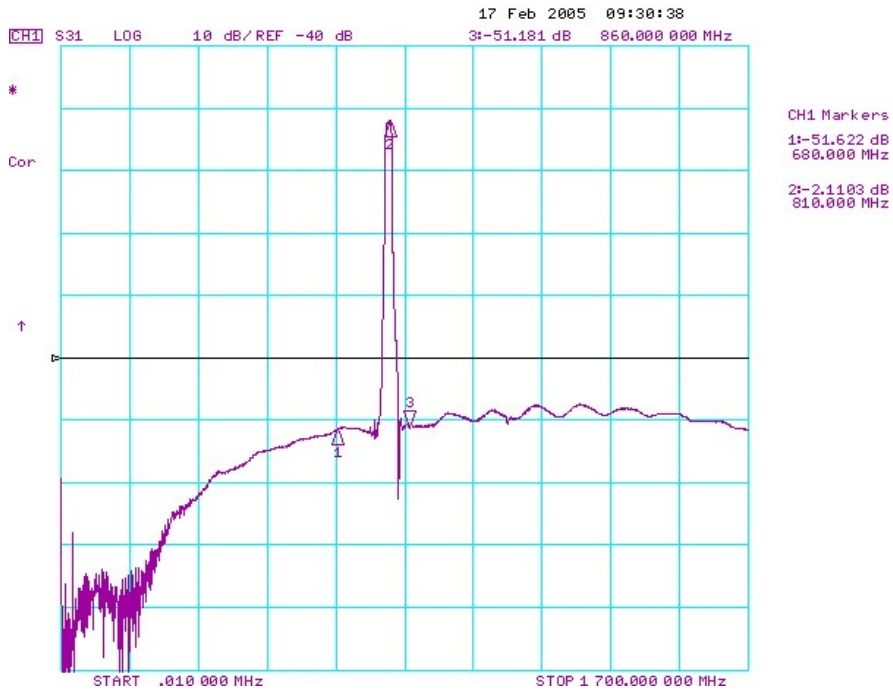
Transfer Function



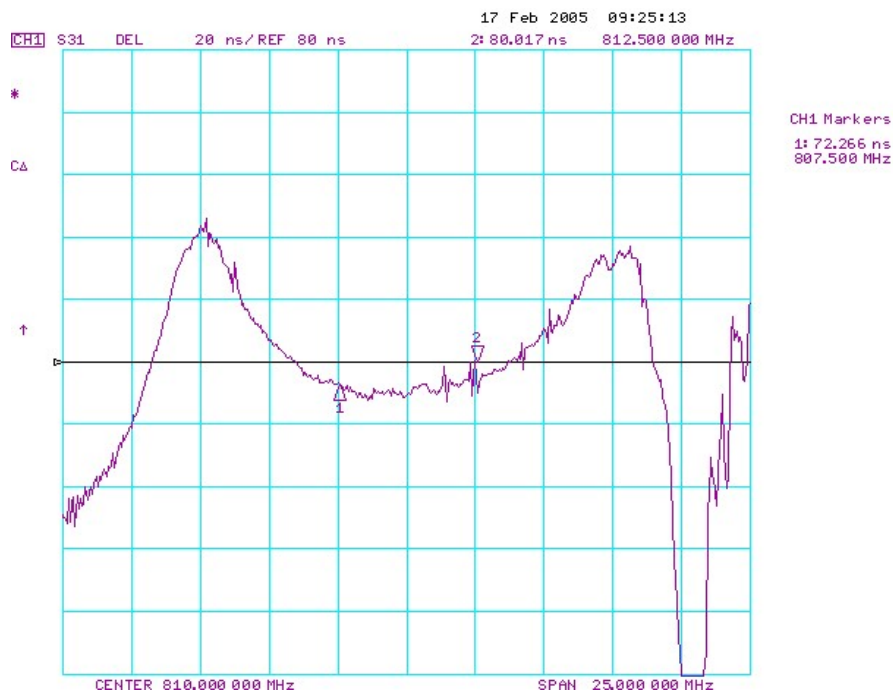
SAW Filter 810.0MHz
Part No: MA08625

Model: TA0424A
Rev No: 1

Wideband



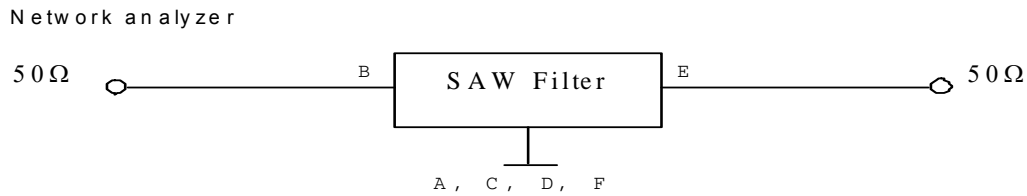
Group Delay Variation



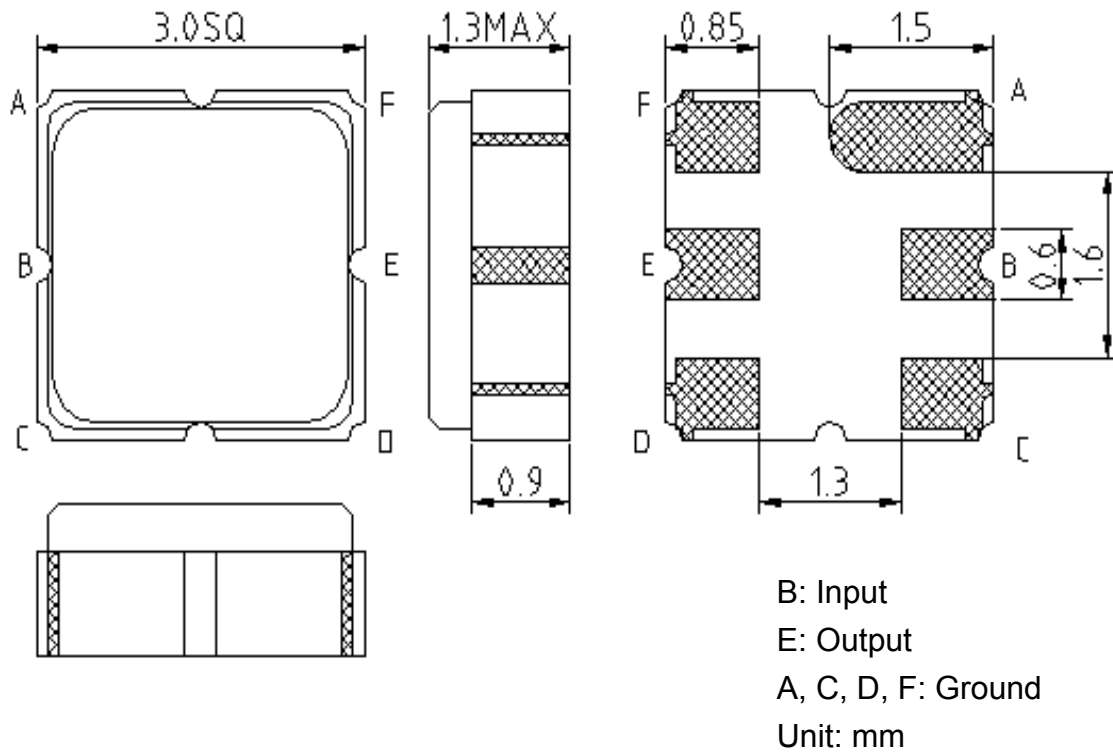
SAW Filter 810.0MHz
Part No: MA08625

Model: TA0424A
Rev No: 1

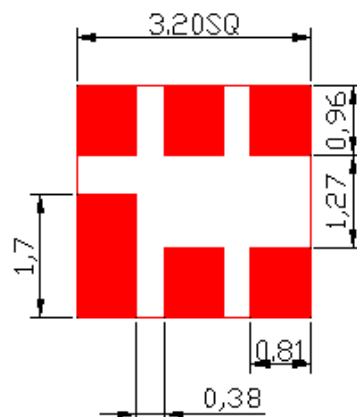
D. MEASUREMENT CIRCUIT:



E. OUTLINE DRAWING:



F. PCB FOOTPRINT:

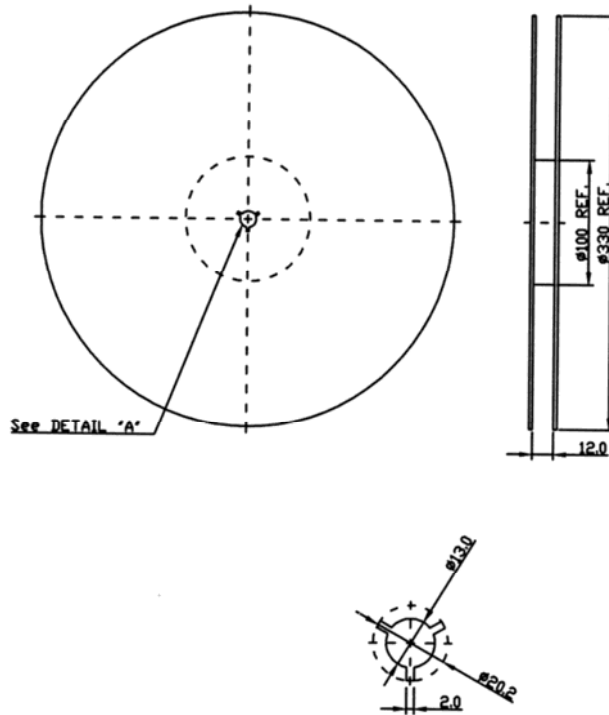


SAW Filter 810.0MHz
Part No: MA08625

Model: TA0424A
Rev No: 1

G. PACKING:

1. REEL DIMENSION



2. TAPE DIMENSION

