

SAW Filter 1228.0MHz

Model: TA0490A

Part No: MA08506

REV. NO.: 1

A. MAXIMUM RATING:

1. Input Power Level: 5 dBm
2. DC voltage: 3 V
3. Operating Temperature: -40°C to 85°C
4. Storage Temperature: -40°C to +85°C

B. CHARACTERISTICS:

Item	Unit	Min.	Typ.	Max.
Center Frequency	MHz	-	1228	-
Insertion Loss 1218 ~ 1238 MHz	dB	-	2.7	3.9
Ripple 1218 ~ 1238 MHz	dB	-	0.4	1.8
Absolute Attenuation				
0 ~ 1088 MHz	dB	38	53	-
1088 ~ 1178 MHz	dB	32	46	-
1178 ~ 1188 MHz	dB	20	45	-
1270 ~ 1290 MHz	dB	15	35	-
1290 ~ 1378 MHz	dB	30	49	-
1378 ~ 1480 MHz	dB	35	55	-
1480 ~ 2500 MHz	dB	27	34	-
2500 ~ 3000 MHz	dB	18	28	-
Source Impedance	Ω	-	50	-
Load Impedance	Ω	-	50	-

Note1. No matching network required for operation at 50Ω

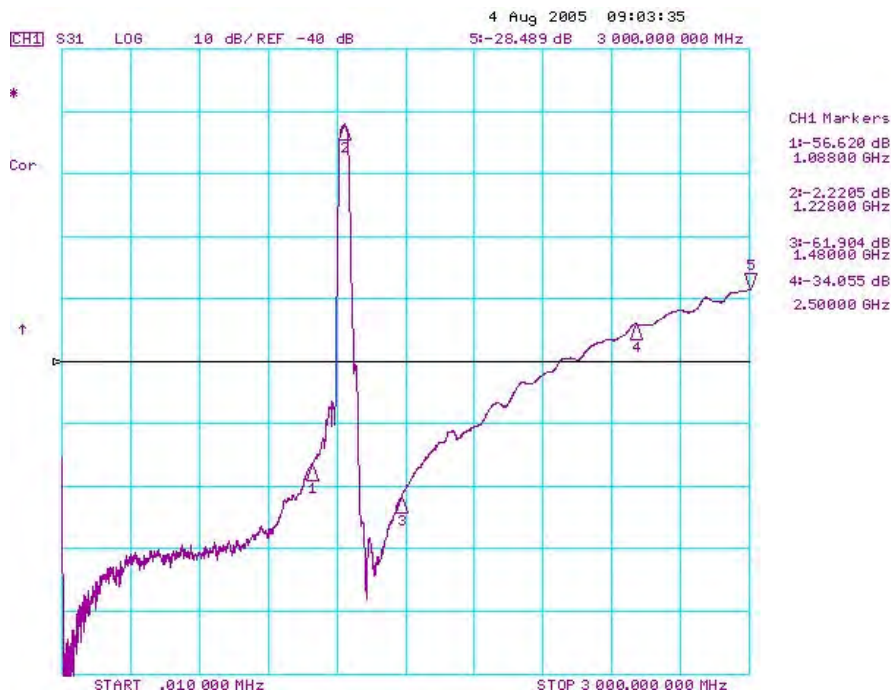
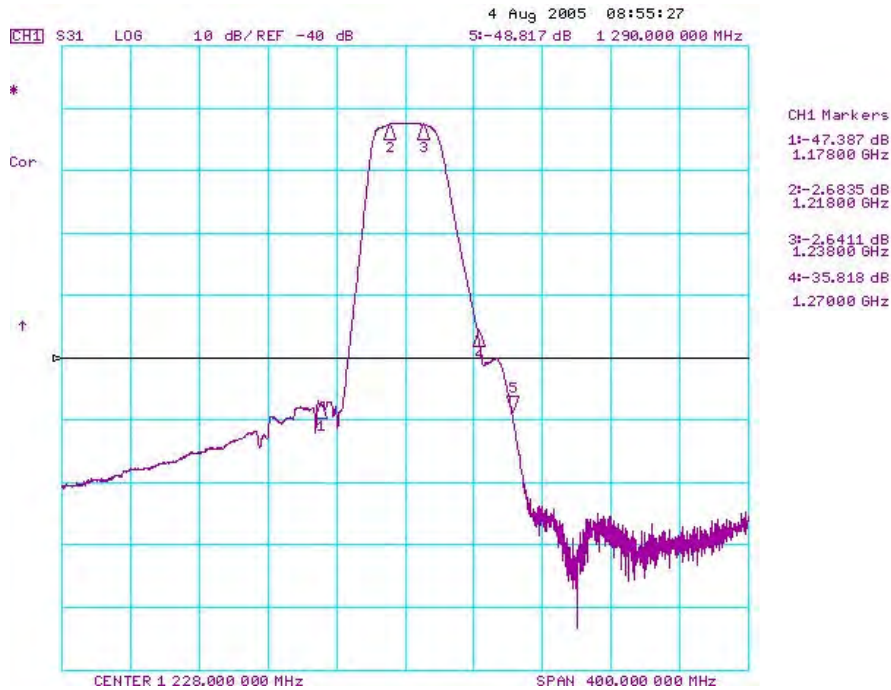
SAW Filter 1228.0MHz

Model: TA0490A

Part No: MA08506

REV. NO.: 1

C. TRANSFER FUNCTION:



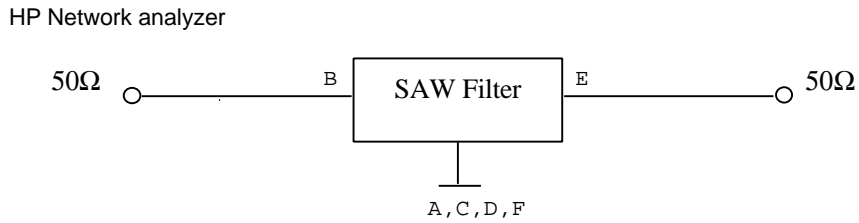
SAW Filter 1228.0MHz

Model: TA0490A

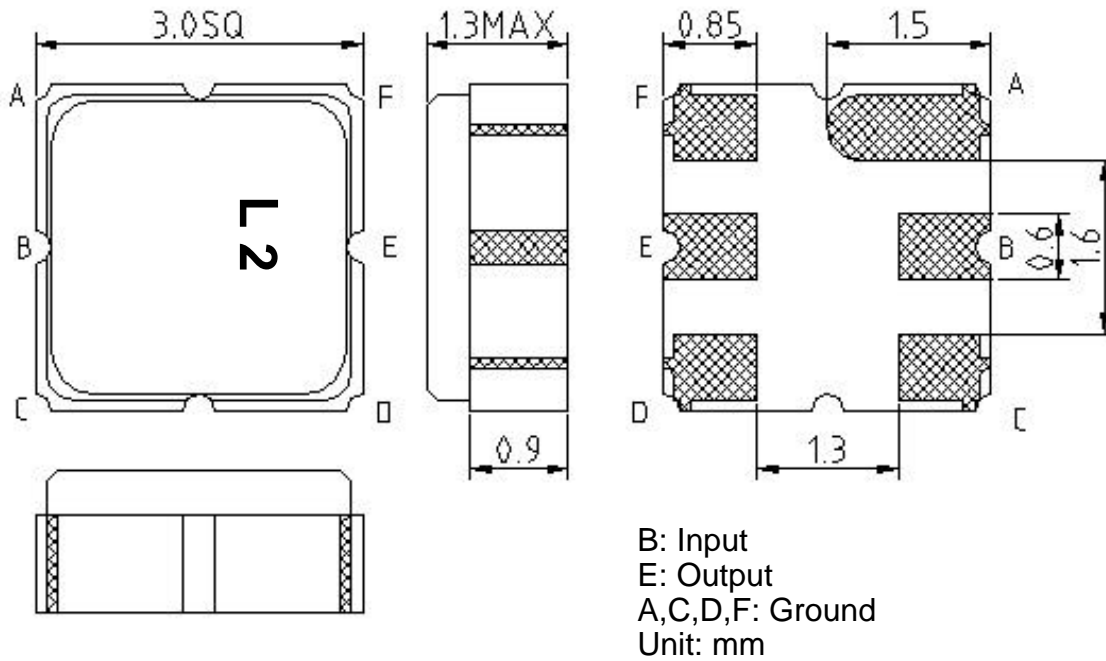
Part No: **MA08506**

REV. NO.: 1

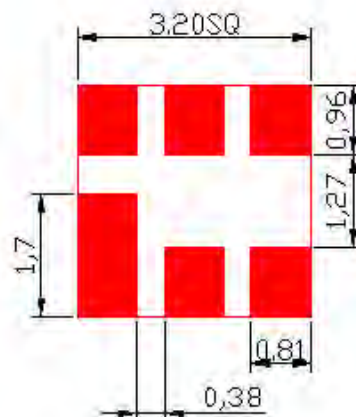
D. MEASUREMENT CIRCUIT:



E. OUTLINE DRAWING:



F. PCB FOOTPRINT:



SAW Filter 1228.0MHz

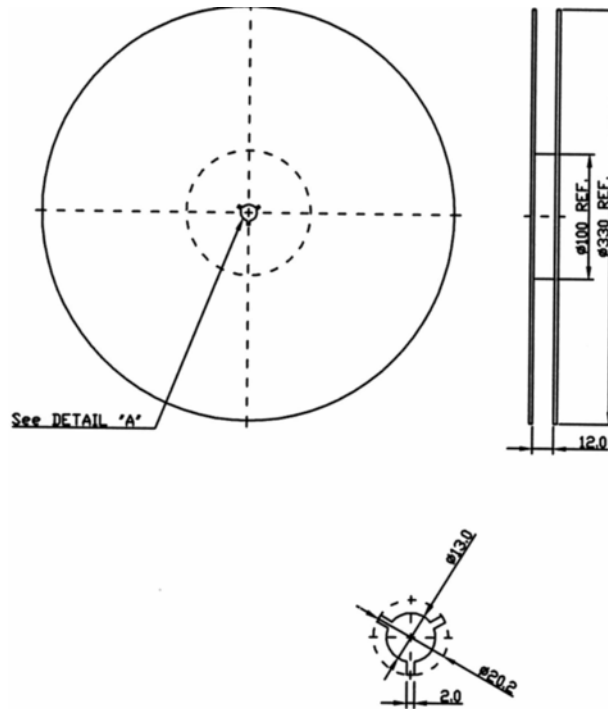
Model: TA0490A

Part No: MA08506

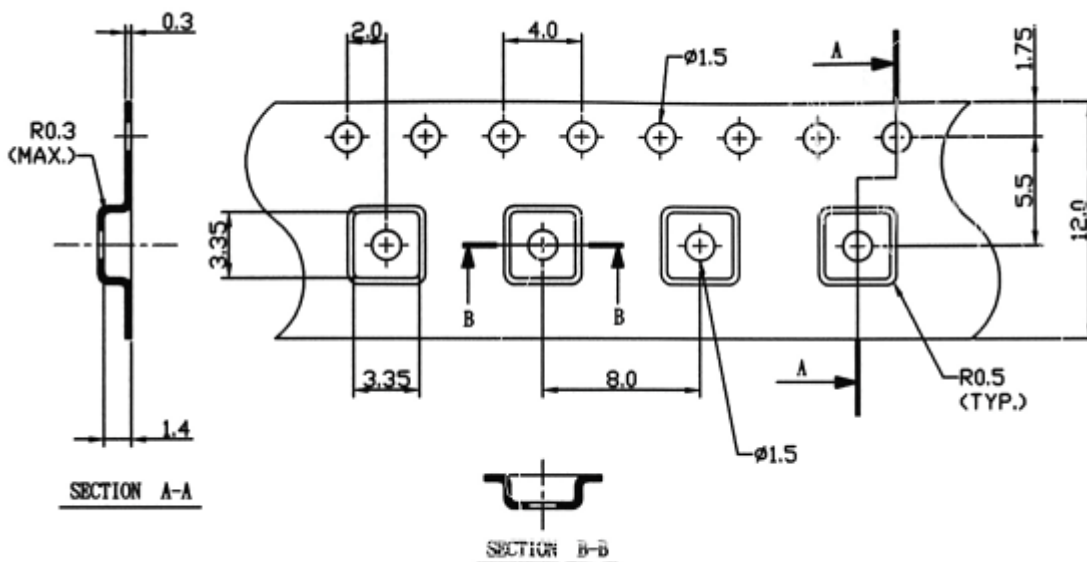
REV. NO.: 1

G. PACKING:

1. REEL DIMENSION



2. TAPE DIMENSION



→
Direction of Feed