

---

**SAW Filter 44.0MHz**

**Model: TB0362A**

**Part No: MA08462**

**REV. NO.: 2**

---

**A. MAXIMUM RATING:**

1. Input Power Level: 10 dBm
2. Operating Temperature: -40°C to +85°C
3. Storage Temperature: -40°C to +85°C

**B. CHARACTERISTICS:**

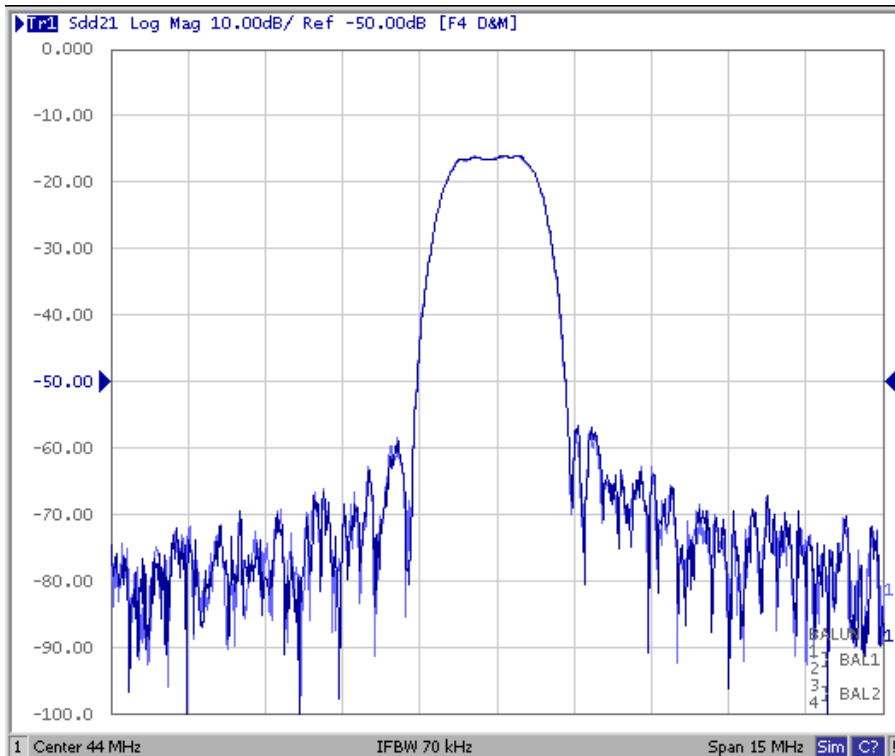
Item	Unit	Min.	Type.	Max.
Center frequency, Fc	MHz	-	44	-
Insertion Loss, IL	dB	-	16	17.5
3 dB Bandwidth	MHz	1.7	1.8	
Pass band Ripple Fc±0.45MHz	dB	-	0.6	1.0
Relative Attenuation Fc±0.96MHz	dB	4	5.5	
Relative Attenuation Fc±1.0MHz	dB	5	6.7	
Relative Attenuation Fc±1.75MHz	dB	38	42	
Relative Attenuation 26.5MHz to 42.5MHz	dB	38	41	
Relative Attenuation 46.5MHz to 61.5MHz	dB	38	52	

**SAW Filter 44.0MHz**  
**Part No: MA08462**

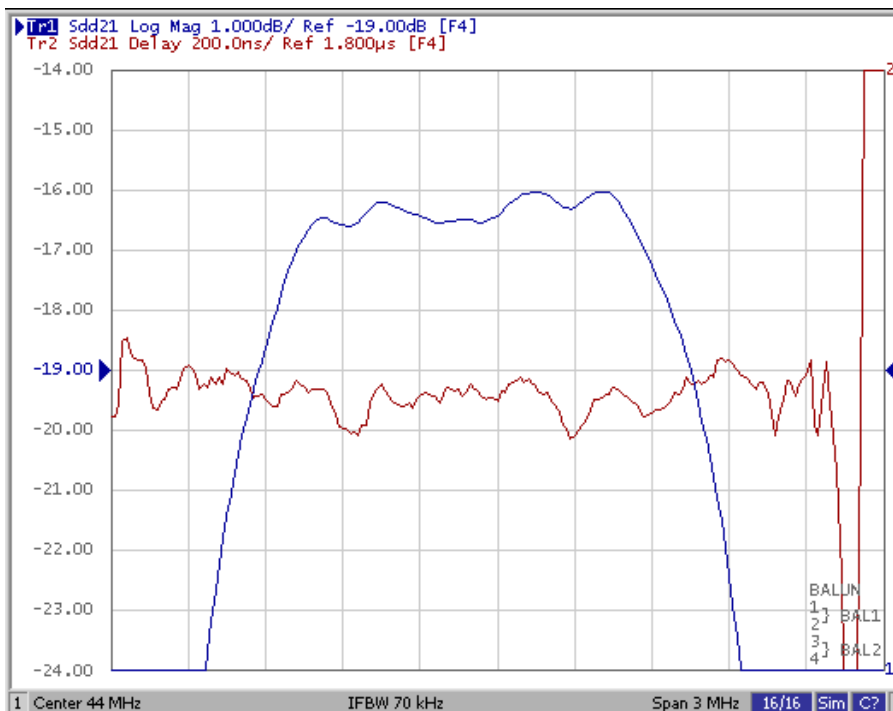
**Model: TB0362A**  
**REV. NO.: 2**

**C. FREQUENCY CHARACTERISTICS:**

(1) Frequency Response



(2) Passband response and Group Delay Variation:



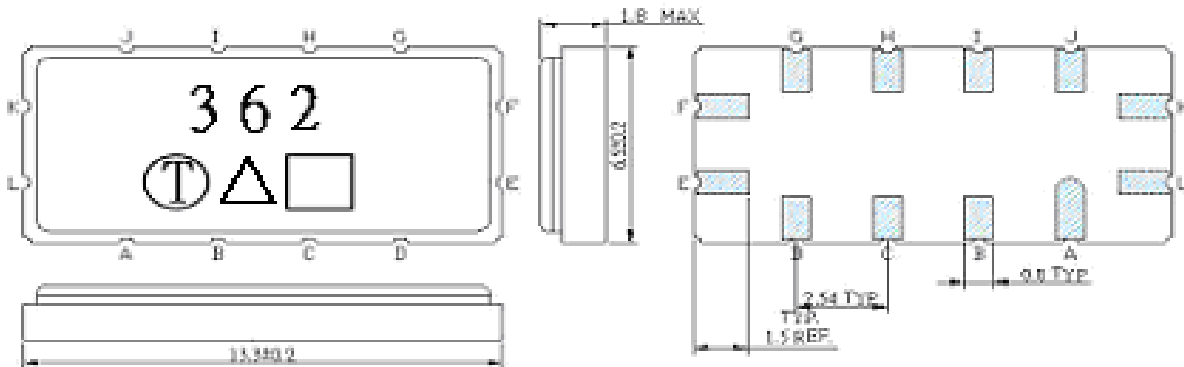
**SAW Filter 44.0MHz**

**Model: TB0362A**

Part No: **MA08462**

REV. NO.: 2

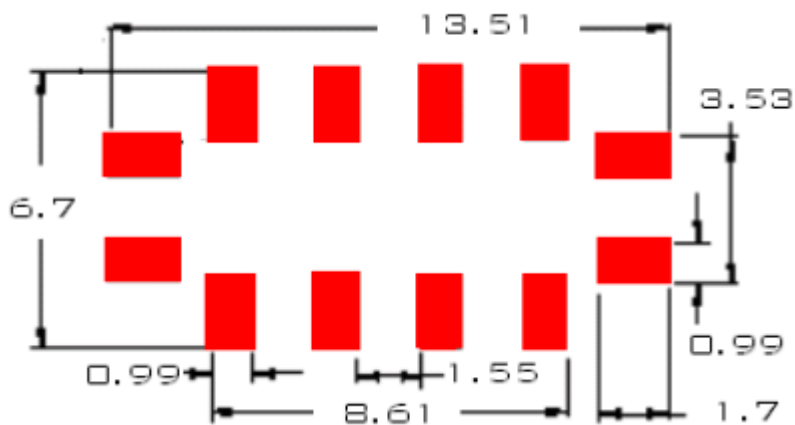
**D. OUTLINE DRAWING:**



Unit: mm

- Pin K=L: RF input
- Pin E=F: RF output
- Pin A, B, C, D, G, H, I, J: To be Ground

**E. PCB FOOTPRINT:**



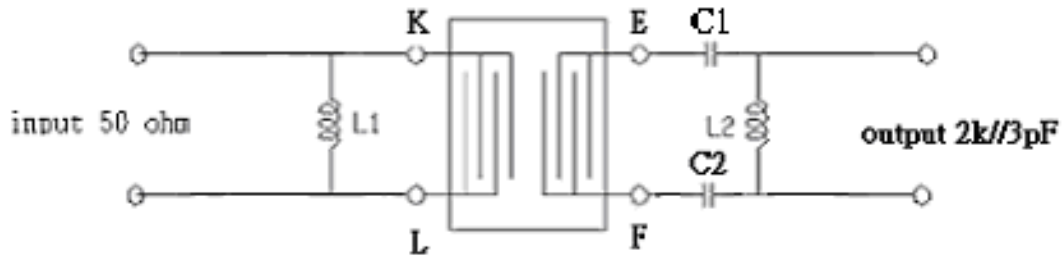
**SAW Filter 44.0MHz**

**Model: TB0362A**

**Part No: MA08462**

**REV. NO.: 2**

**F. MATCHING CIRCUIT:**



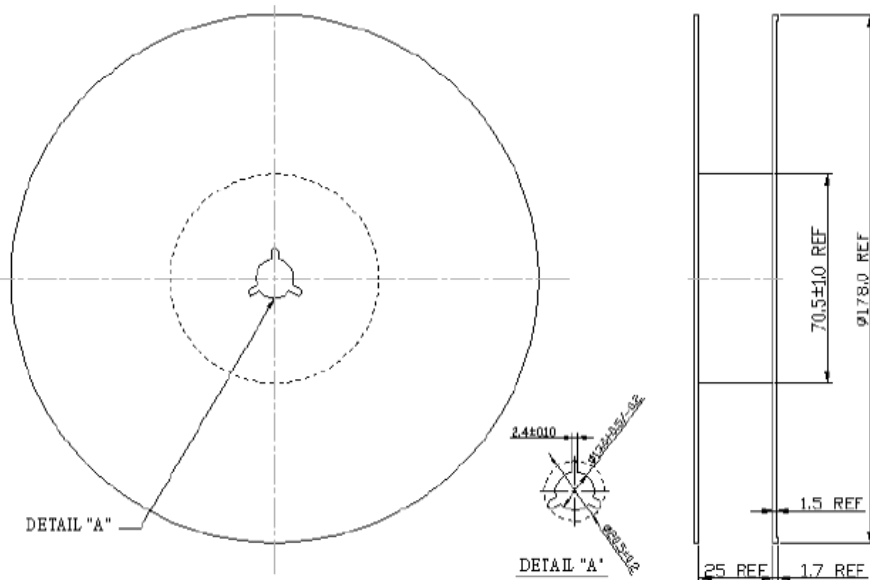
L1=270nH, C1=C2=59pF, L2=560nH

**SAW Filter 44.0MHz**  
**Part No: MA08462**

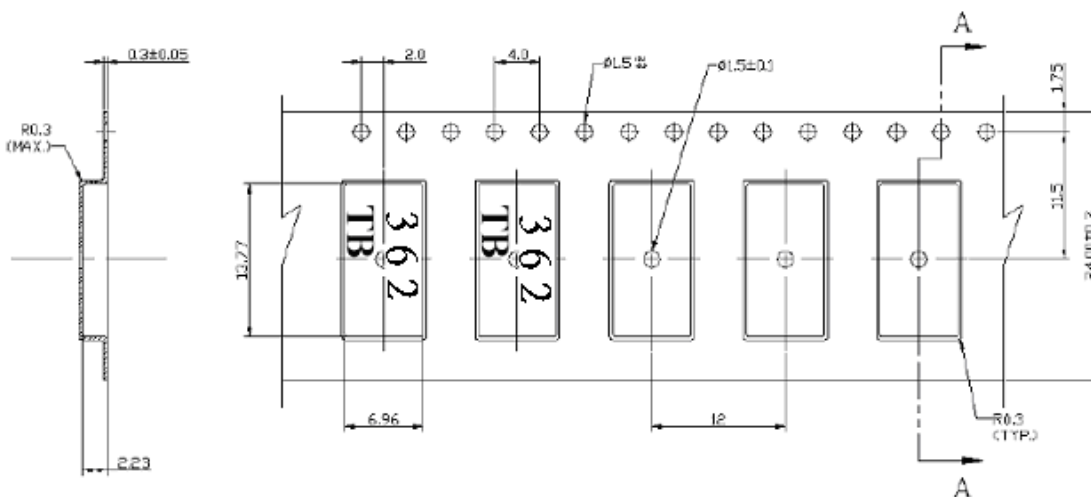
**Model: TB0362A**  
**REV. NO.: 2**

**G. PACKING:**

(1). REEL DIMENSION:



(2). TYPE DIMENSION:



**SAW Filter 44.0MHz**

**Model: TB0362A**

**Part No: MA08462**

**REV. NO.: 2**

**H. RECOMMENDED REFLOW PROFILE:**

