

**SAW Filter 416.405MHz**  
**Part No: MA08361**

**Model: TA0592A**  
**Rev No: 1**

**A. MAXIMUM RATING:**

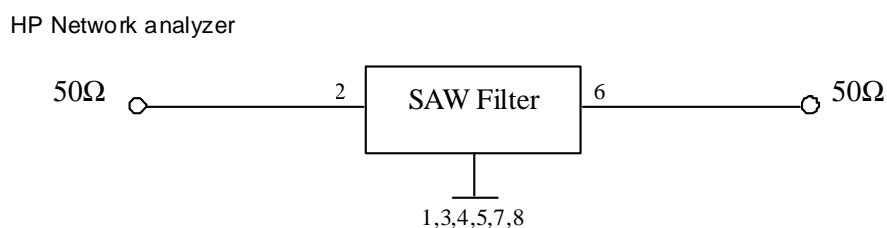
1. Input Power Level: 10dBm
2. DC voltage: 3V
3. Operating Temperature: +15°C to +35°C
4. Storage Temperature: -40°C to +85°C

**B. CHARACTERISTICS:**

Item		Min.	Typ.	Max.
Center frequency Fc	MHz	-	416.405	-
Insertion loss 413.9 ~ 418.9MHz IL	dB	-	2.2	3.6
Amplitude ripple 413.9 ~ 418.9MHz	dB	-	0.7	2.1
VSWR 413.9 ~ 418.9MHz	dB	-	1.3	2.1
Attenuation (Reference level from 0dB)				
1 ~ 379.0MHz	dB	40	50	-
379.0 ~ 394.0MHz	dB	31	50	-
394.0 ~ 405.5MHz	dB	10	35	-
442.0 ~ 469.0MHz	dB	37	50	-
469.0 ~ 550.0MHz	dB	40	50	-
Temperature coefficient of frequency	ppm/k	-	-36	-
Source impedance Z <sub>S</sub>	Ω	-	50	-
Load impedance Z <sub>L</sub>	Ω	-	50	-

Note1. No matching network required for operation at 50Ω

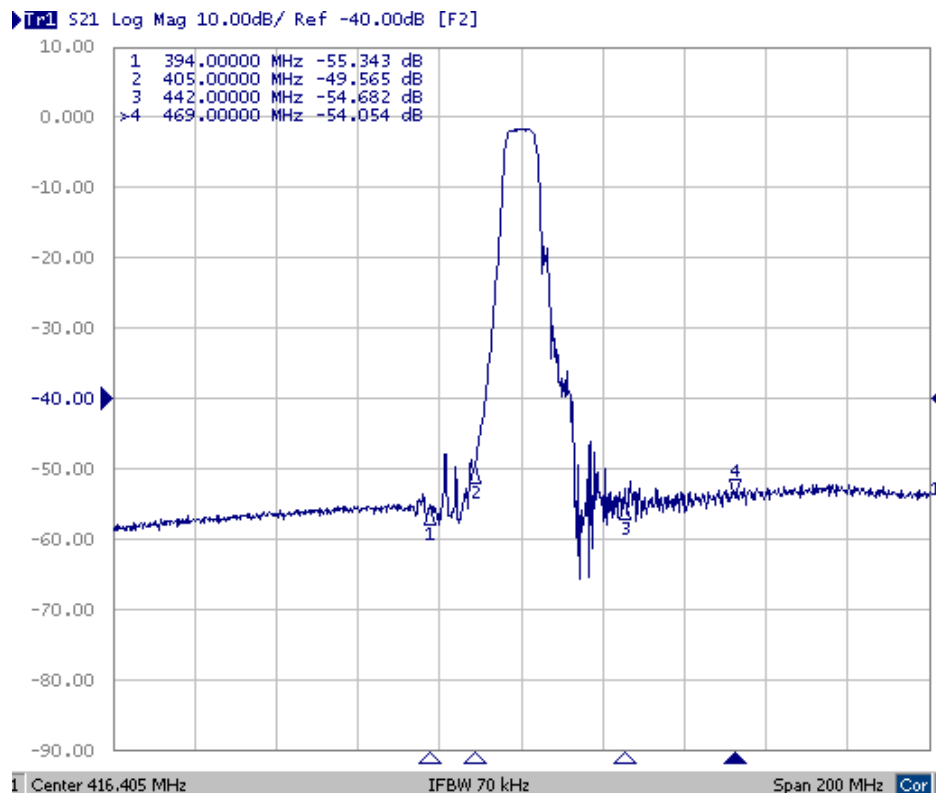
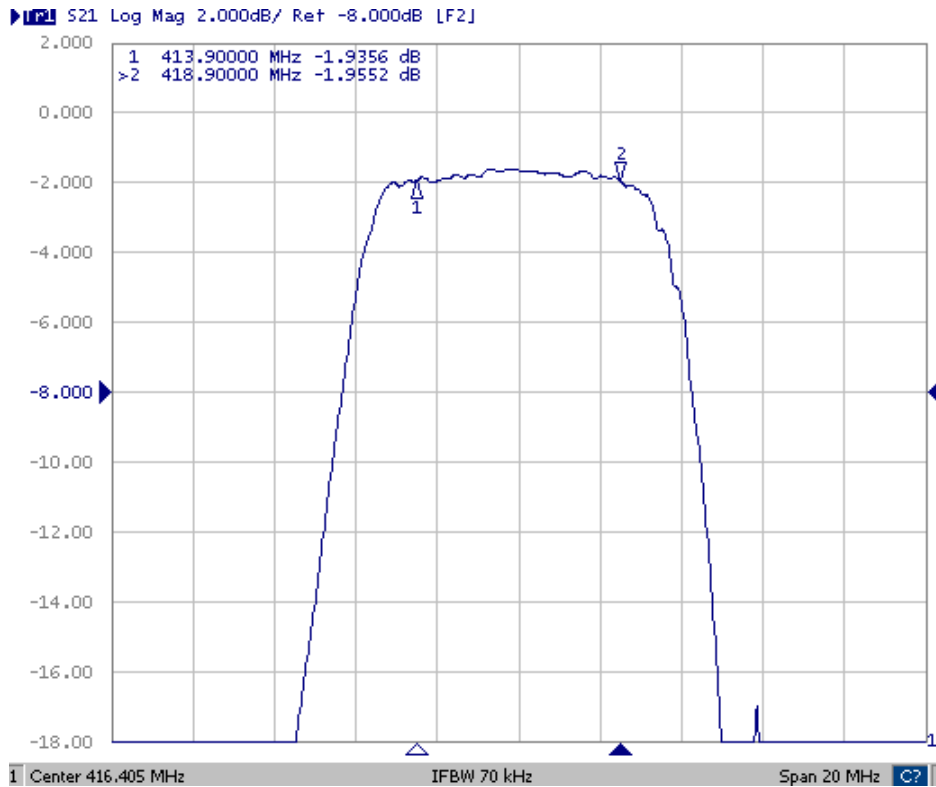
**C. MEASUREMENT CIRCUIT:**



**SAW Filter 416.405MHz**  
**Part No: MA08361**

**Model: TA0592A**  
**Rev No: 1**

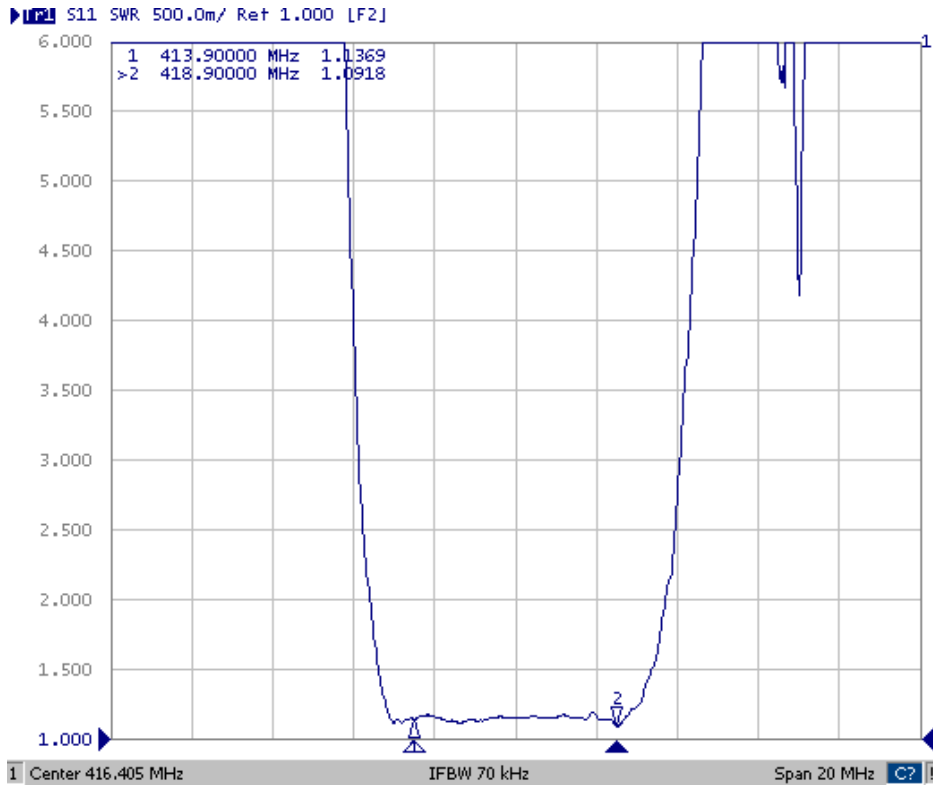
**D. TRANSFER FUNCTION:**



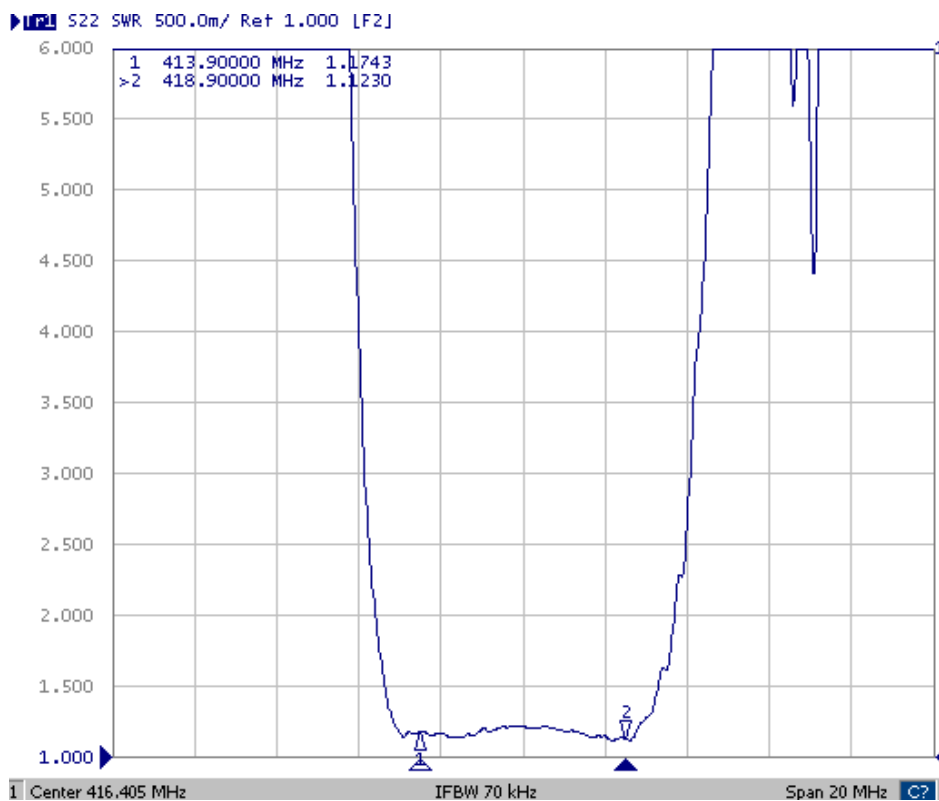
**SAW Filter 416.405MHz**  
**Part No: MA08361**

**Model: TA0592A**  
**Rev No: 1**

### VSWR S11



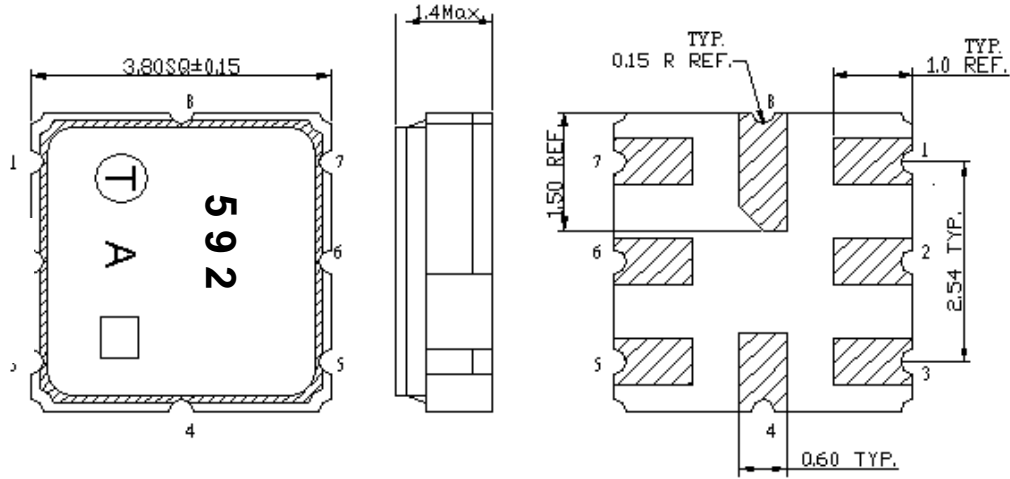
### VSWR S22



**SAW Filter 416.405MHz**  
**Part No: MA08361**

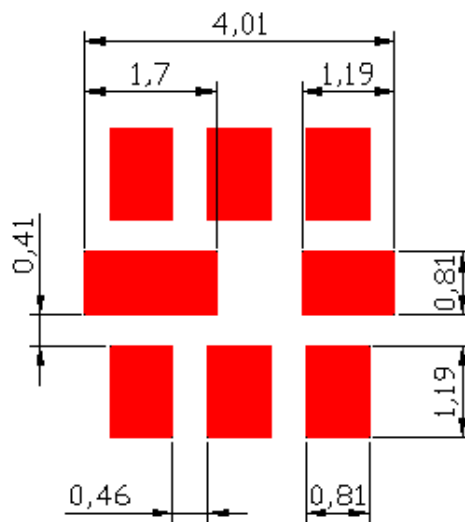
**Model: TA0592A**  
**Rev No: 1**

**E. OUTLINE DRAWING:**



- 2: Input
  - 6: Output
  - 1, 3, 4, 5, 7, 8: Ground
- Unit: mm

**F. PCB FOOTPRINT:**

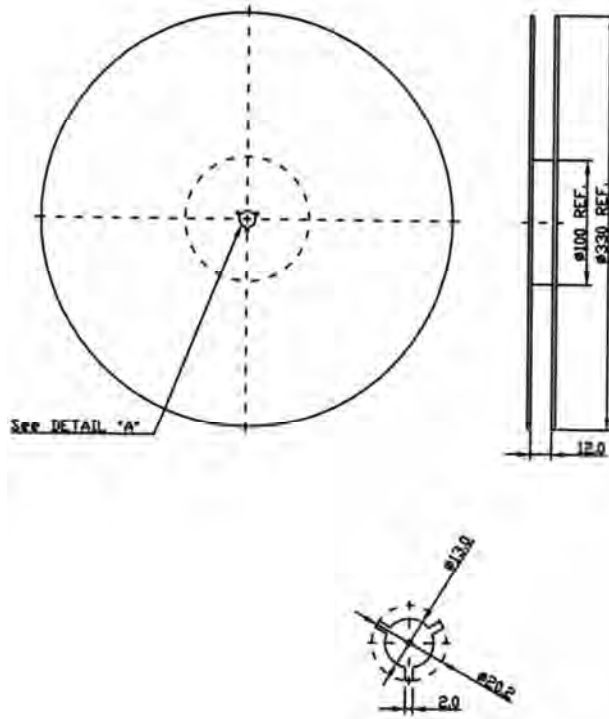


**SAW Filter 416.405MHz**  
**Part No: MA08361**

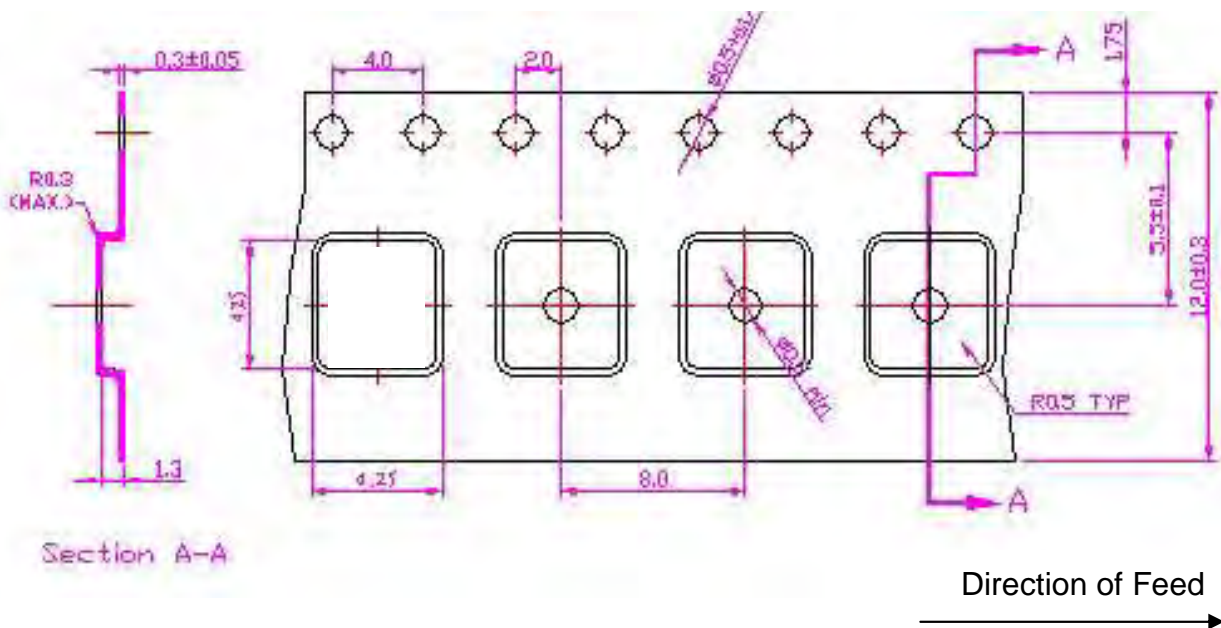
**Model: TA0592A**  
**Rev No: 1**

**G. PACKING:**

1. REEL DIMENSION



2. TAPE DIMENSION



**SAW Filter 416.405MHz**  
**Part No: MA08361**

**Model: TA0592A**  
**Rev No: 1**

**H. REFLOW PROFILE:**

