

500MHz SAW Filter

Model: TA0506A

Part No: MA08239

REV NO.: 1

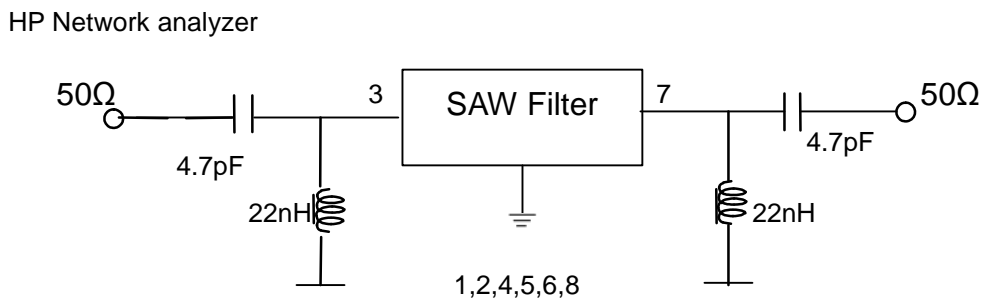
A. MAXIMUM RATING:

1. Input Power Level: 5dBm
2. DC voltage: 5V
3. Operating Temperature: -20°C to 70°C
4. Storage Temperature: -40°C to +85°C

B. CHARACTERISTICS:

Item		Min.	Typ.	Max.
Center frequency	Fc MHz	-	500	-
Insertion loss	497 ~ 503MHz IL	-	2.7	4.7
Amplitude ripple	497 ~ 503MHz	-	0.4	2.0
Attenuation (Reference level from 0dB)				
	412 ~ 434MHz	39	50	-
	434 ~ 465 MHz	33	43	-
	553 ~ 567MHz	33	50	-
	567 ~ 588MHz	40	55	-

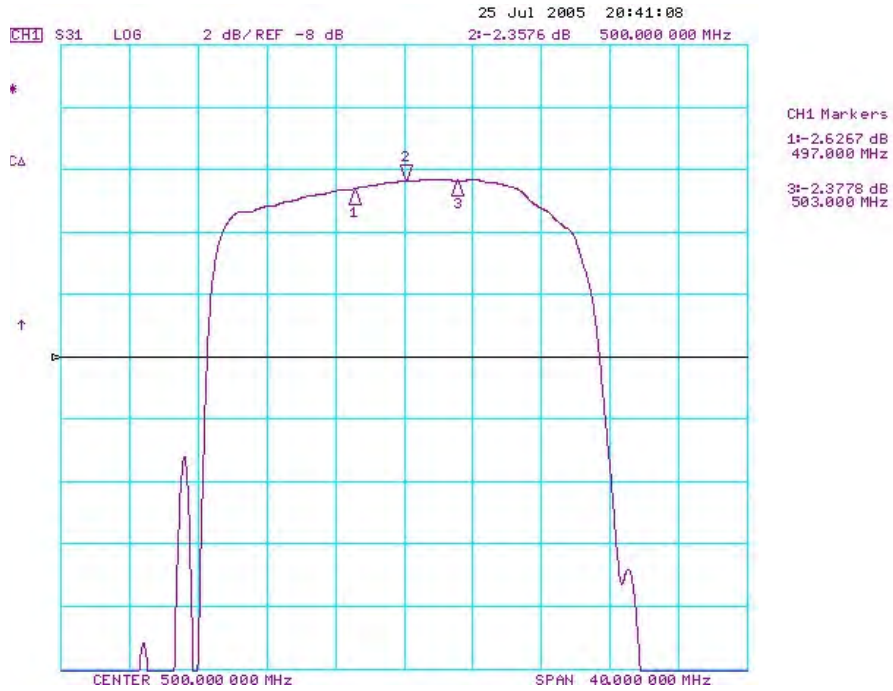
C. MEASUREMENT CIRCUIT:



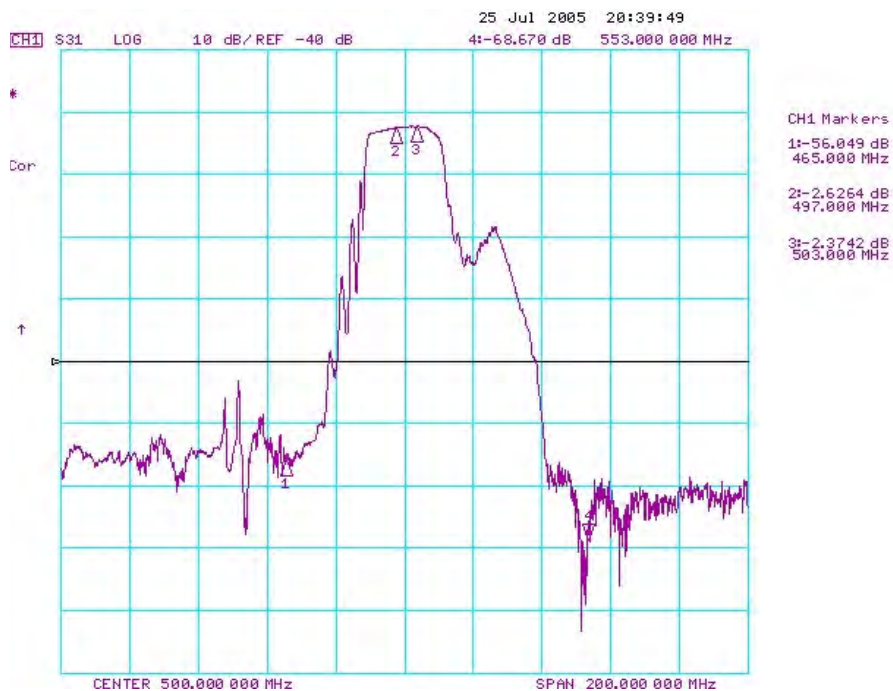
500MHz SAW Filter
Part No: **MA08239**

Model: TA0506A
REV NO.: 1

D. TRANSFER FUNCTION:



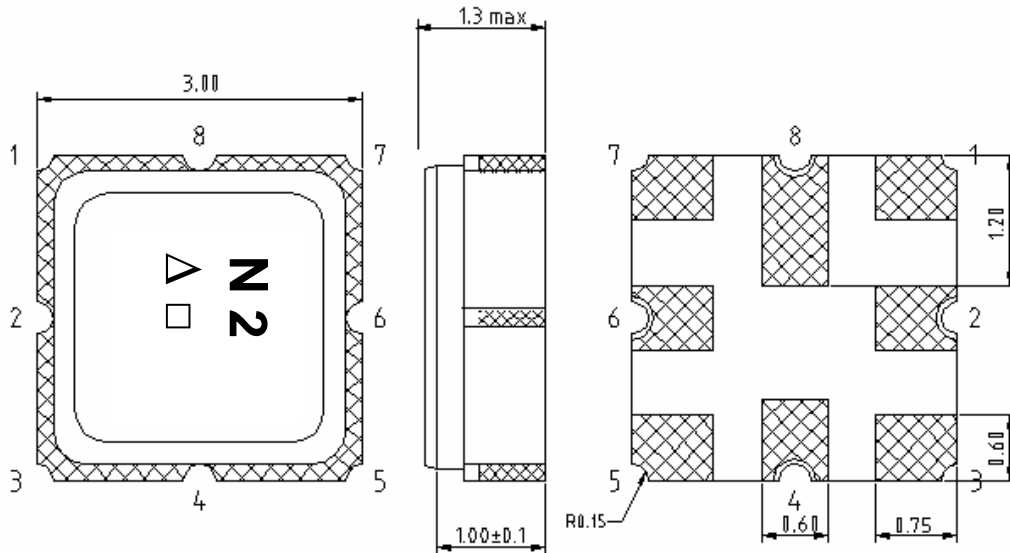
Wideband



500MHz SAW Filter
Part No: MA08239

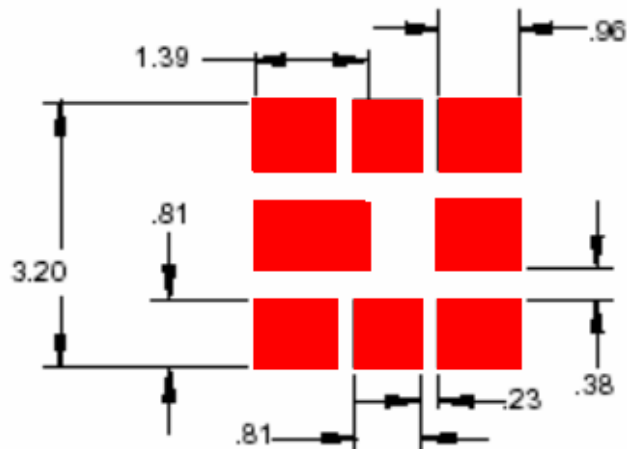
Model: TA0506A
REV NO.: 1

E. OUTLINE DRAWING:



3: Input
 7: Output
 1,2,4,5,6,8: Ground
 Δ: Year code
 □: Date code
 Unit: mm

F. PCB FOOTPRINT:

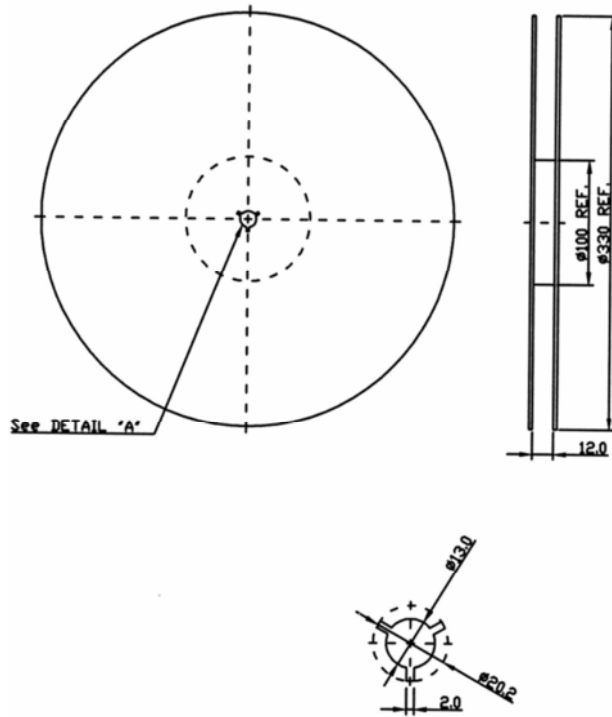


500MHz SAW Filter
Part No: MA08239

Model: TA0506A
REV NO.: 1

G. PACKING:

1. REEL DIMENSION



2. TAPE DIMENSION

