

SAW Filter 776.50MHz

Model: TA0557A

Part No: MA08039

REV. NO.: 1

A. MAXIMUM RATING:

1. Input Power Level: 10 dBm
2. DC voltage: 3 V
3. Operating Temperature: -20°C to +70°C
4. Storage Temperature: -40°C to +85°C

B. CHARACTERISTICS:

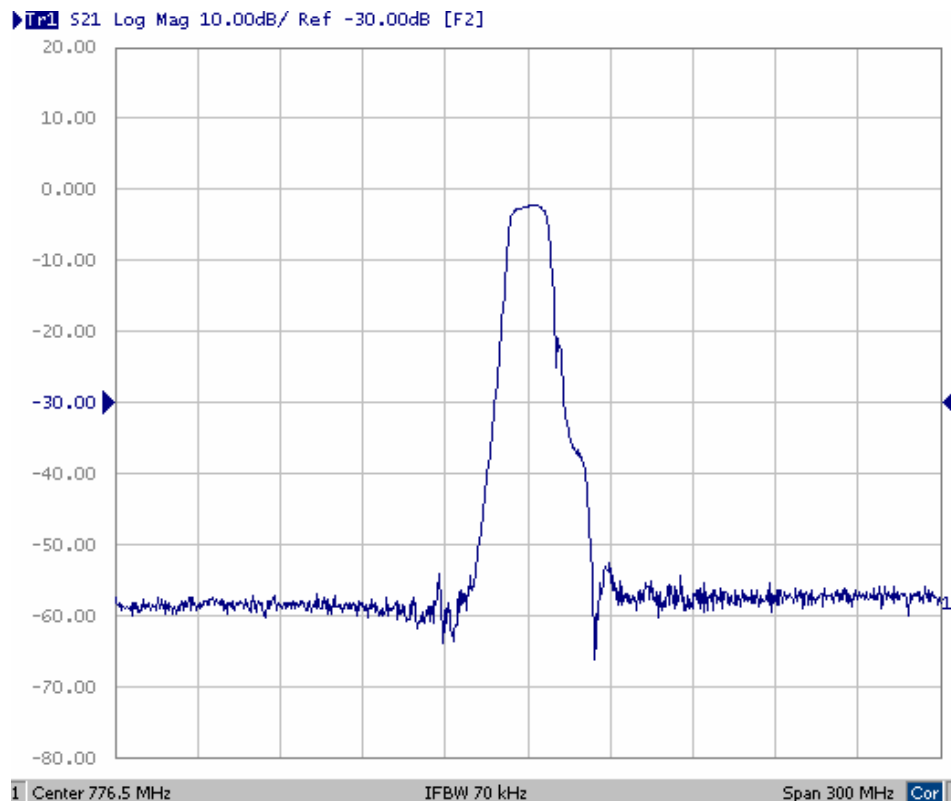
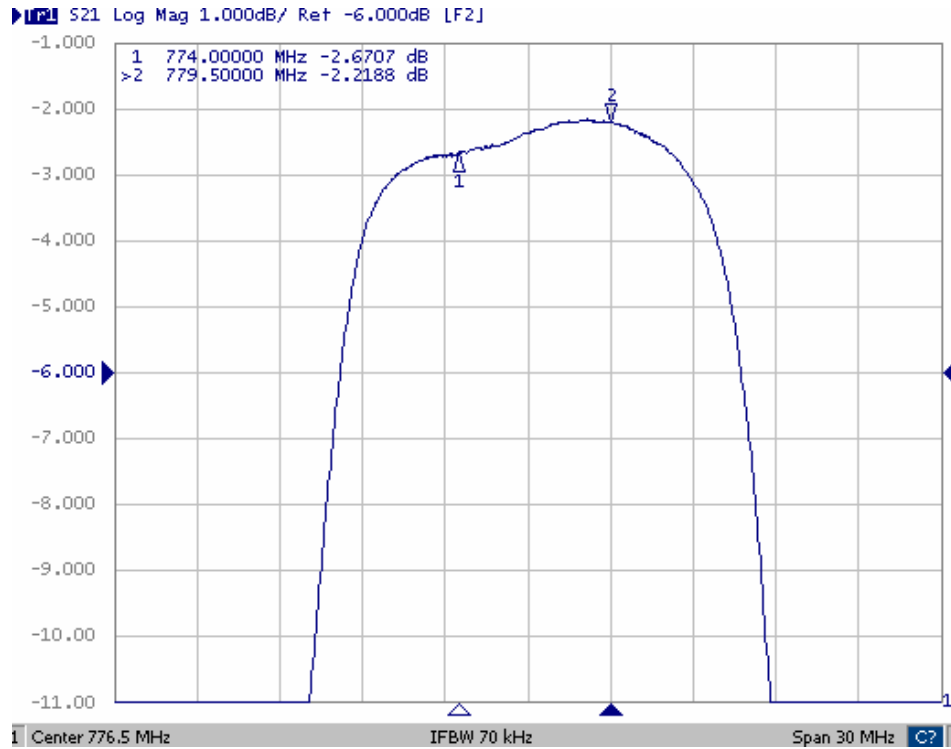
Item		Min.	Typ.	Max.
Center frequency	F _c MHz	-	776.5	-
Insertion loss	774 ~ 779.5 MHz IL	-	2.6	4.2
Amplitude ripple	774 ~ 779.5 MHz	-	0.7	1.5
Attenuation (Reference level from 0dB)				
	729 ~ 734 MHz	30	50	-
	819 ~ 824 MHz	30	50	-
Source impedance	Z _s	-	50	-
Load impedance	Z _L	-	50	-

Note1. No matching network required for operation at 50Ω

SAW Filter 776.50MHz
Part No: MA08039

Model: TA0557A
REV. NO.: 1

C. TRANSFER FUNCTION:



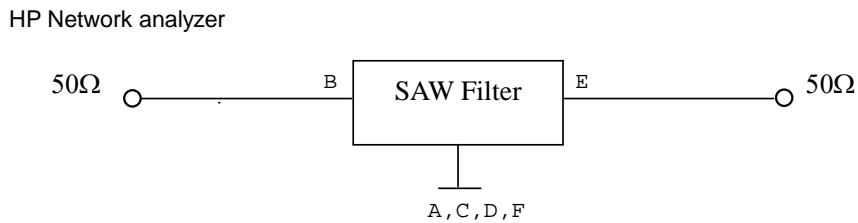
SAW Filter 776.50MHz

Model: TA0557A

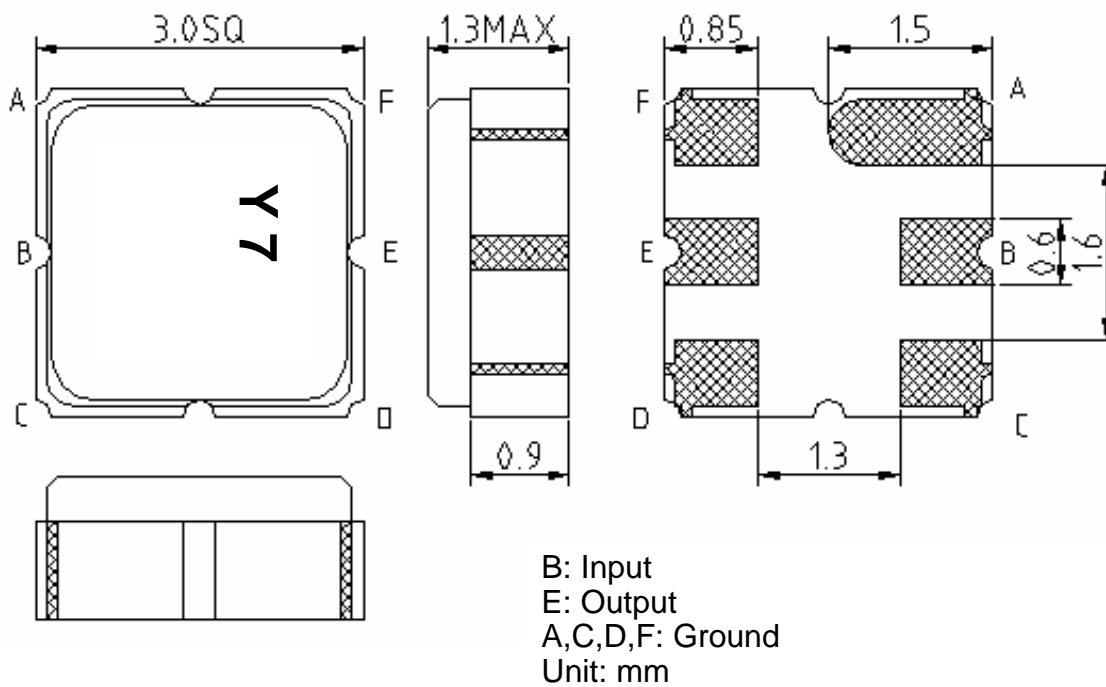
Part No: MA08039

REV. NO.: 1

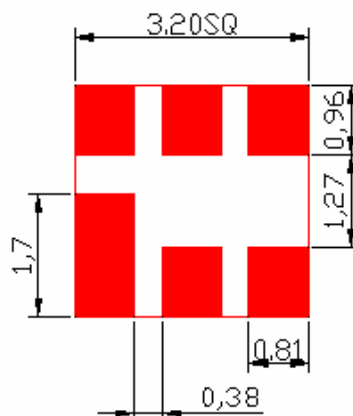
D. MEASUREMENT CIRCUIT:



E. OUTLINE DRAWING:



F. PCB FOOTPRINT:



SAW Filter 776.50MHz

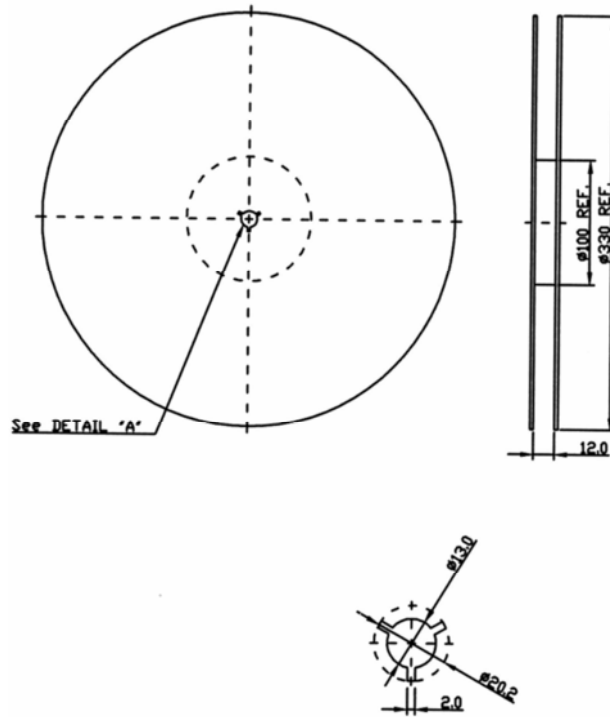
Model: TA0557A

Part No: MA08039

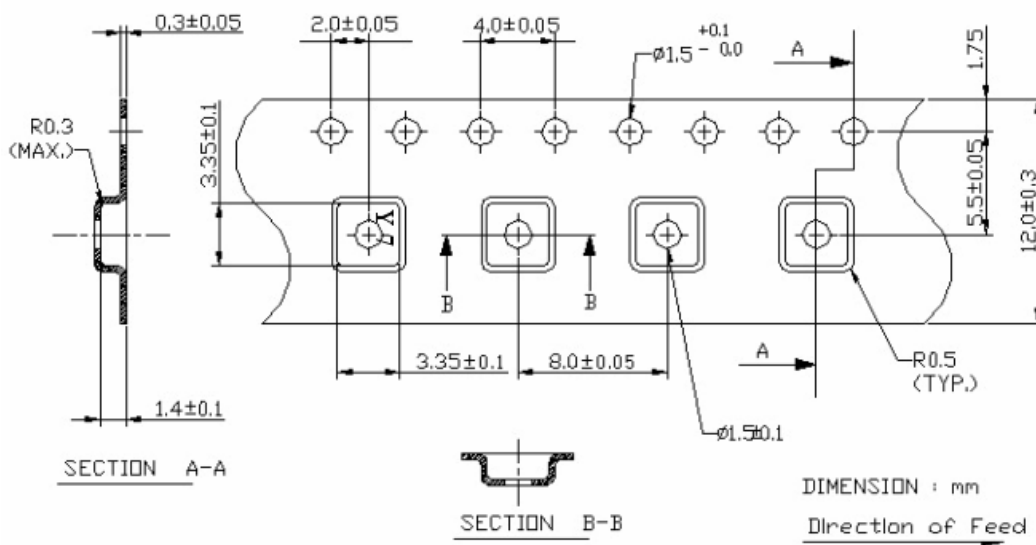
REV. NO.: 1

G. PACKING:

1. REEL DIMENSION



2. TAPE DIMENSION



SAW Filter 776.50MHz

Model: TA0557A

Part No: MA08039

REV. NO.: 1

H. RECOMMENDED REFLOW PROFILE:

