

**SAW Filter 50.0MHz**  
**Part No: MA07558**

**Model: TB0281A**  
**REV. NO.: 1**

**A. MAXIMUM RATING:**

1. Input Power Level: 10 dBm
2. Operating Temperature: -40°C to 65°C
3. Storage Temperature: -40°C to 85°C

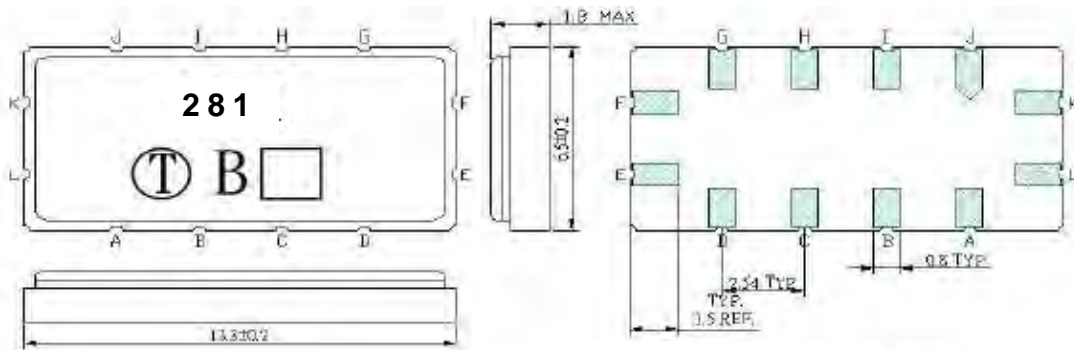
**B. ELECTRICAL CHARACTERISTICS:**

Item	Unit	Min.	Type.	Max.	Note
Center frequency, <b>F<sub>c</sub></b>	MHz	49.7	50	50.3	-
Minimum Insertion Loss, <b>IL</b>	dB	-	10	11	-
Amplitude ripple at any 200KHz bandwidth within 5.6MHz	MHz	-	0.7	1	-
1dB Bandwidth	MHz	5.62	5.77	-	-
3dB Bandwidth	MHz	-	6.12	6.165	-
40dB Bandwidth	MHz	-	8.22	9.00	-
Group Delay Variation within 5.6MHz BW	nS		150	200	-
Phase Linearity within 5.6MHz BW	rms		2	3	-
Triple transit supression	dB	35	40	-	-
Attenuation:(Reference level from Min IL)					
(1) DC~20MHz	dB	40	48		
(2) 20MHz~45MHz	dB	30	37		
(3) 55MHz~65MHz	dB	30	34		
(4) 65MHz~75MHz	dB	38	42		
(5) 75MHz~135MHz	dB	40	47		

**SAW Filter 50.0MHz**  
**Part No: MA07558**

**Model: TB0281A**  
**REV. NO.: 1**

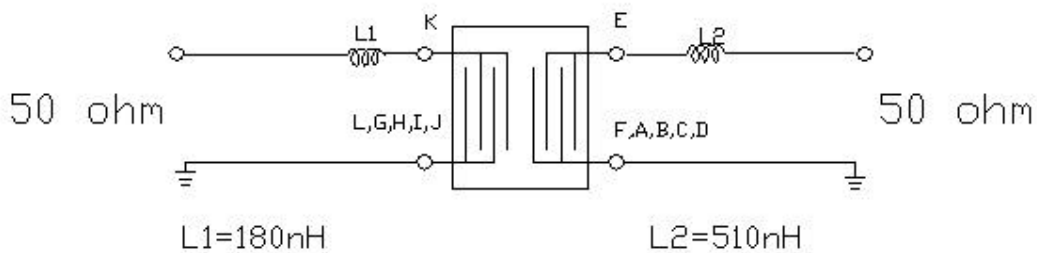
**C. OUTLINE DRAWING:**



Unit: mm

- Pin K: RF Input
- Pin E: RF Output
- Pin L: Input Ground
- Pin F: Output Ground
- Pin A, B, C, D, G, H, I, J: To be Ground
- Date code

**D. MATCHING CIRCUIT:**



**SAW Filter 50.0MHz**  
**Part No: MA07558**

**Model: TB0281A**  
**REV. NO.: 1**

**E. FREQUENCY CHARACTERISTICS:**

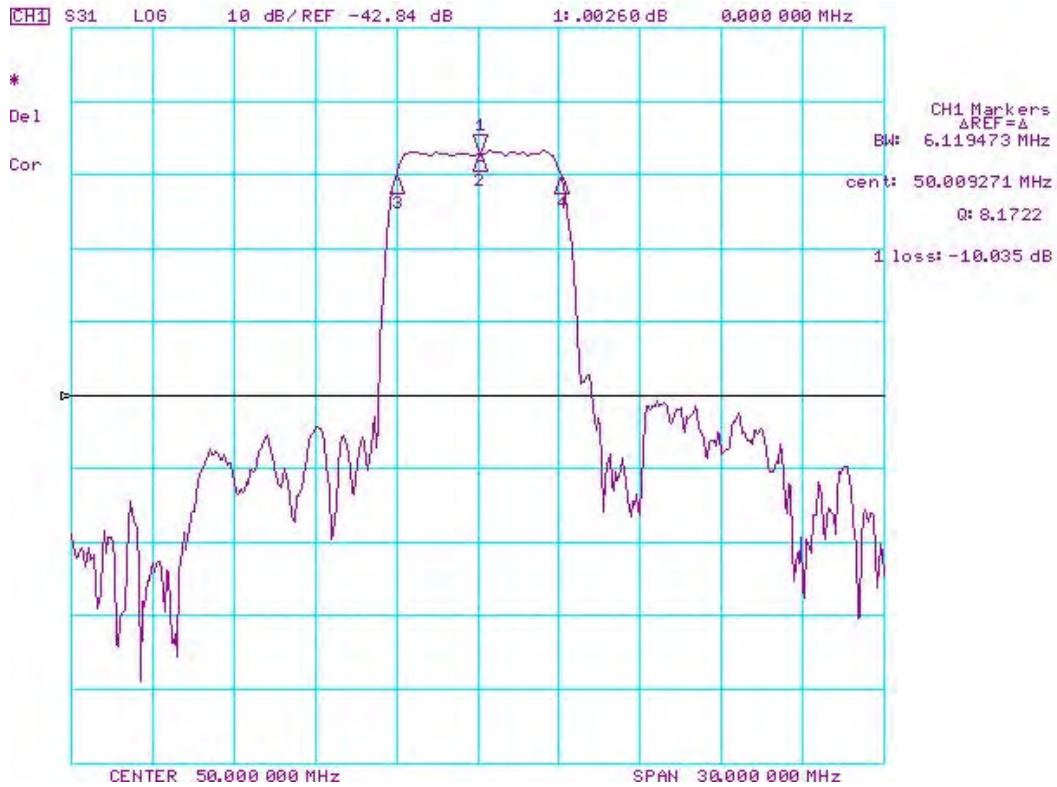


Fig. 1 S21 Response Horizontal: 3MHz; Vertical: 10dB/Div

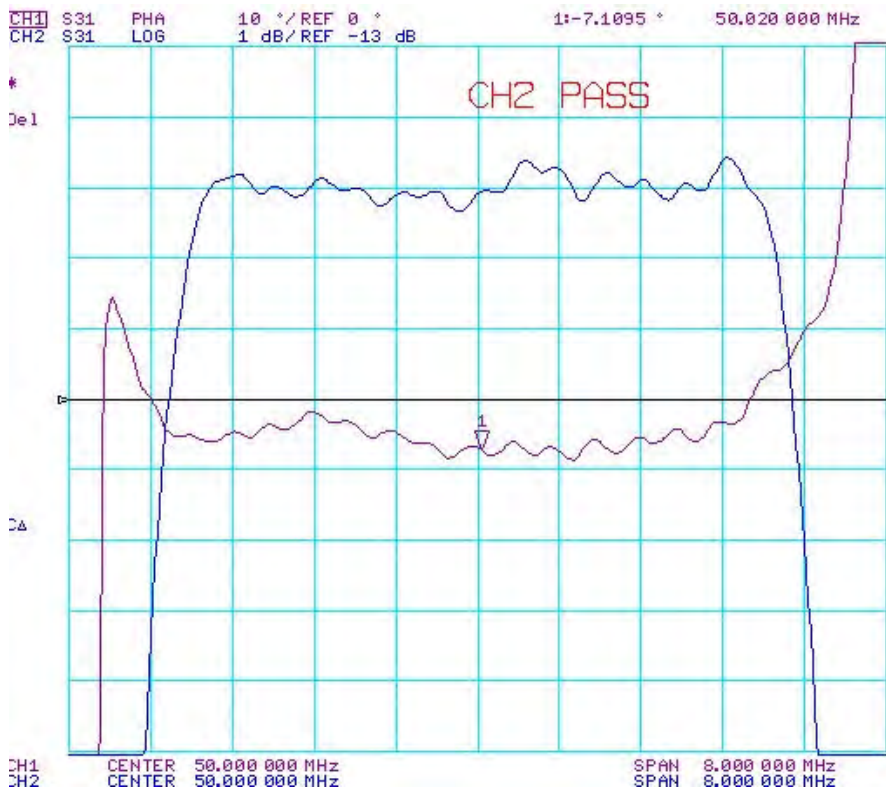


Fig. 2 Inband ripple and phase Horizontal: 0.8MHz; Vertical: 1dB/Div, 10deg/Div

**SAW Filter 50.0MHz**  
**Part No: MA07558**

**Model: TB0281A**  
**REV. NO.: 1**

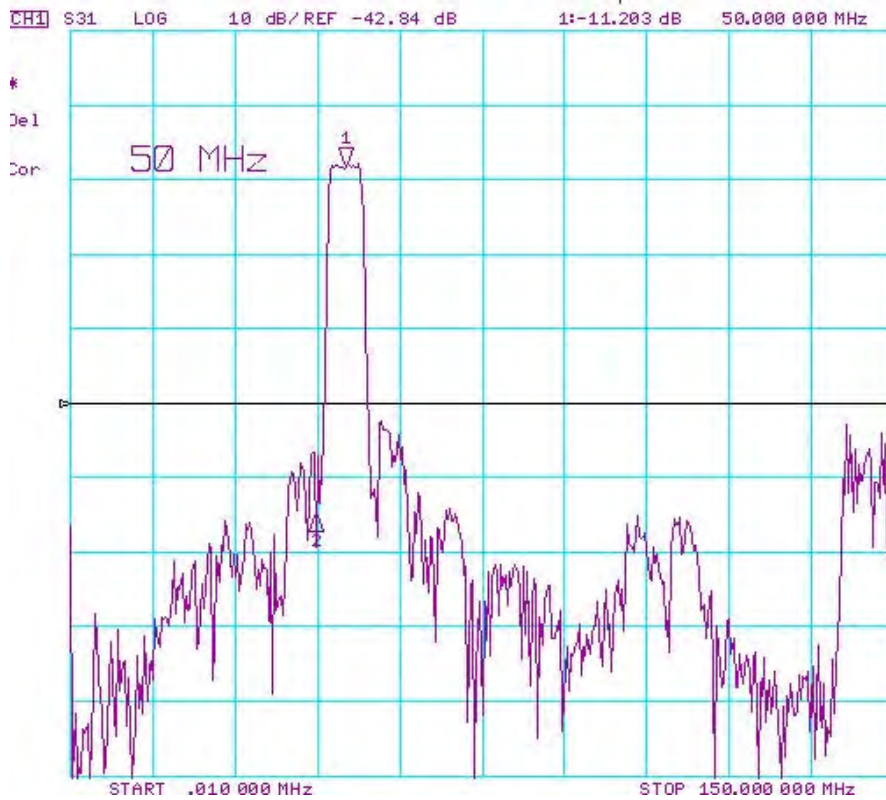


Fig. 3 Wideband response Horizontal: 0.01MHz~150MHz; Vertical: 10dB/Div

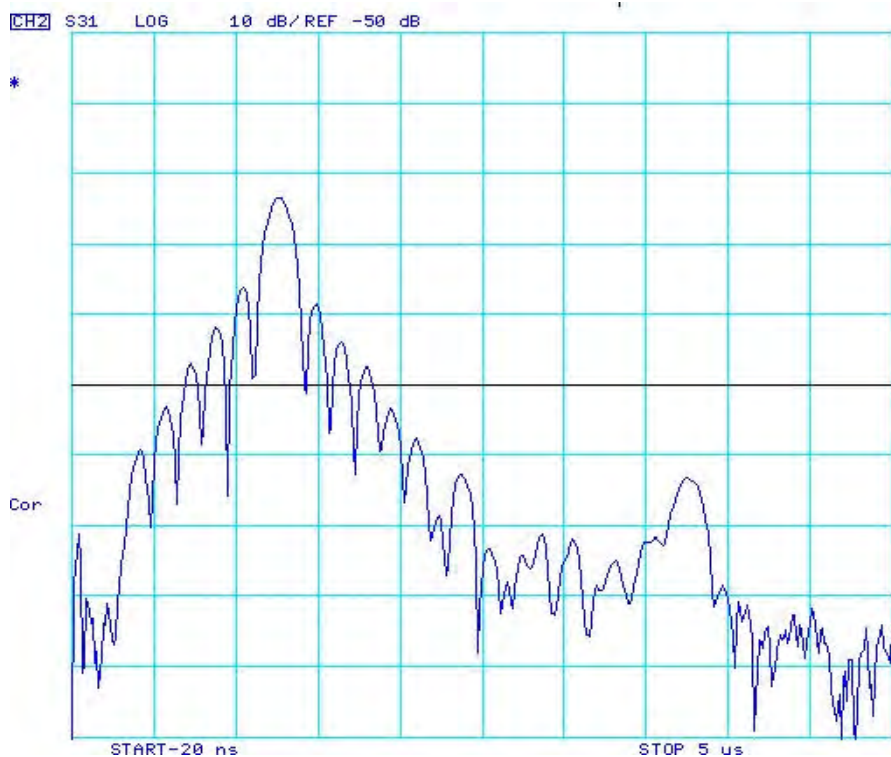


Fig. 4 Time domain response Horizontal: -20nS~5uS; Vertical: 10dB/Div