

SAW Filter 240.0MHz
Part No: MA07210

Model: TB0309A
Rev. No: 3

A. MAXIMUM RATING:

Electrostatic Sensitive Device (ESD)

1. Operating Temperature: -20°C ~ +60°C
2. Storage Temperature: -40°C ~ +85°C
3. Input Power Level: 15dBm

B. CHARACTERISTICS:

Ambient Temperature: 25°C

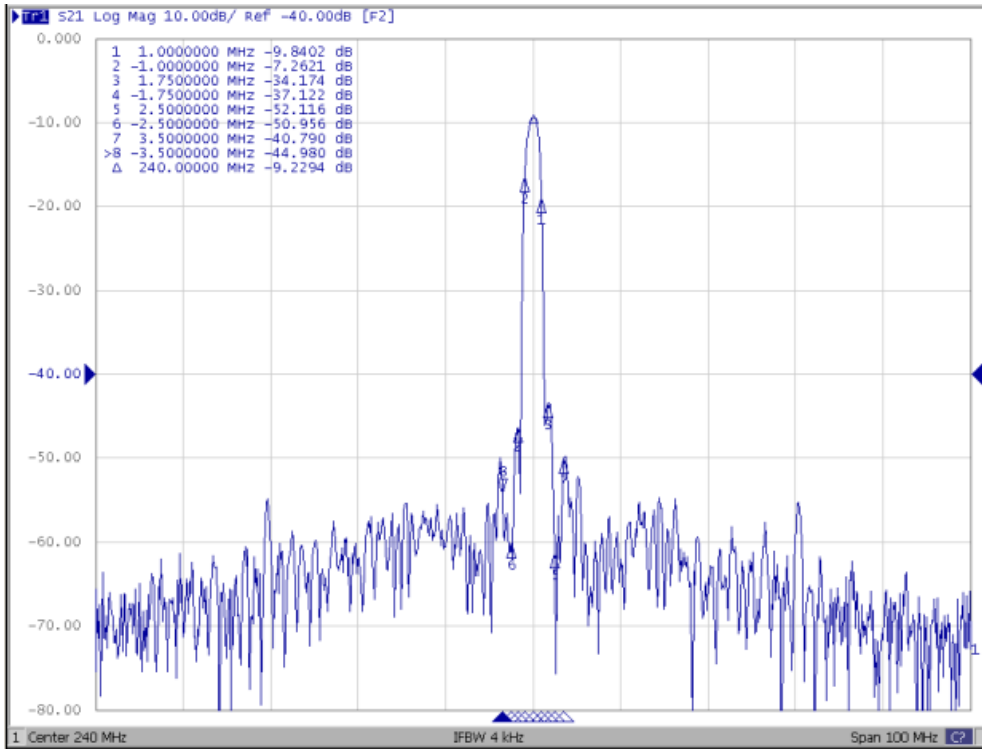
Characteristics	Min.	Typ.	Max	Note
Center frequency Fc MHz	239.9	240.0	240.1	-
Minimum Insertion loss IL dB	-	9.1	10	-
3dB Bandwidth kHz	1000	1450	-	-
Passband Ripple (Fc ± 0.2MHz) dB	-	0.2	1	-
Group Delay Ripple (Fc ± 0.2MHz) nS	-	60	200	-
Attenuation: (Reference level from minimum insertion loss)				
Fc ± 1.0MHz dB	5	7.5	-	-
Fc ± 1.75 ~ 2.5MHz dB	30	34	-	-
Fc ± 2.5 ~ 3.5MHz dB	38	50	-	-
Fc ± 3.50 ~ 50.0MHz dB	36	40	-	-

SAW Filter 240.0MHz
Part No: MA07210

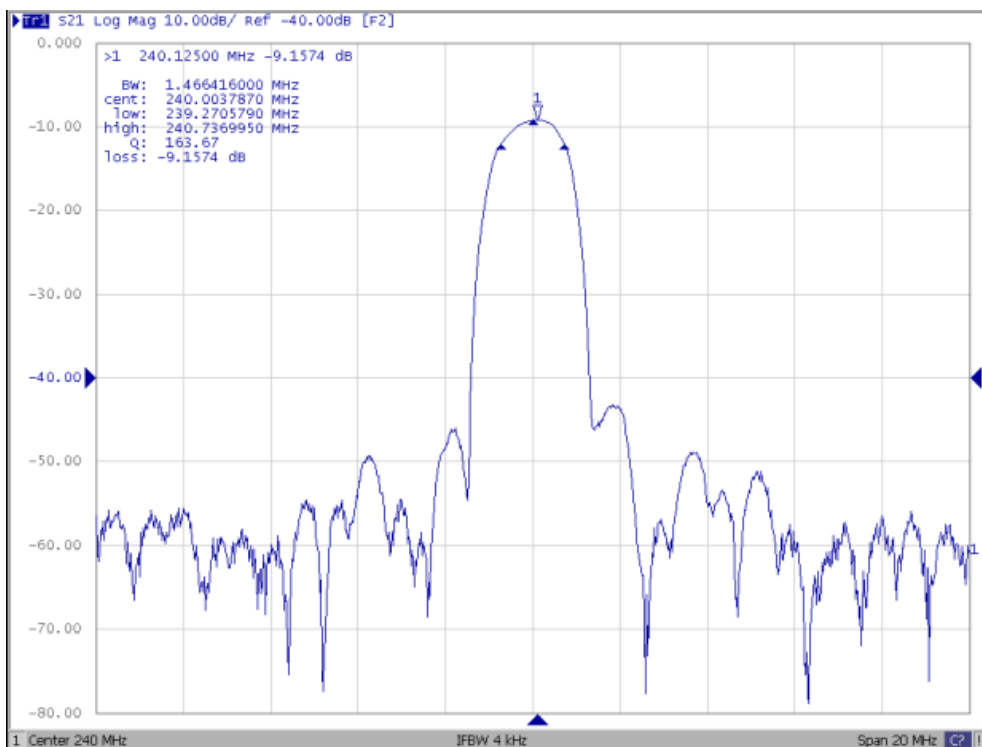
Model: TB0309A
Rev. No: 3

C. FREQUENCY CHARACTERISTICS:

1. S21 Response (span 100MHz)



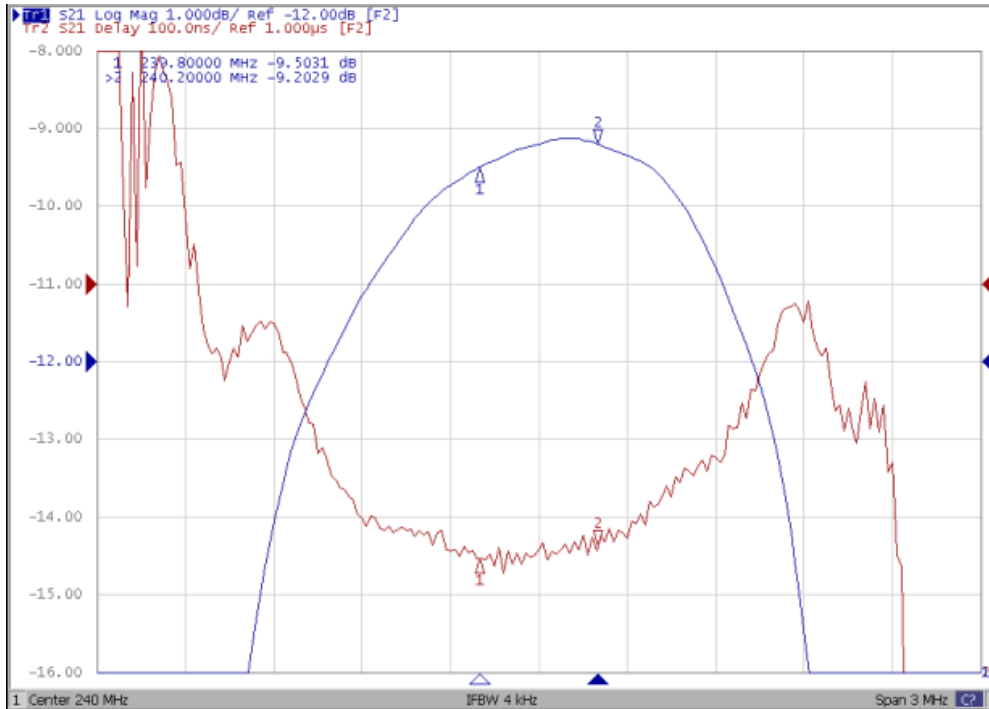
2. S21 Response (span 20MHz)



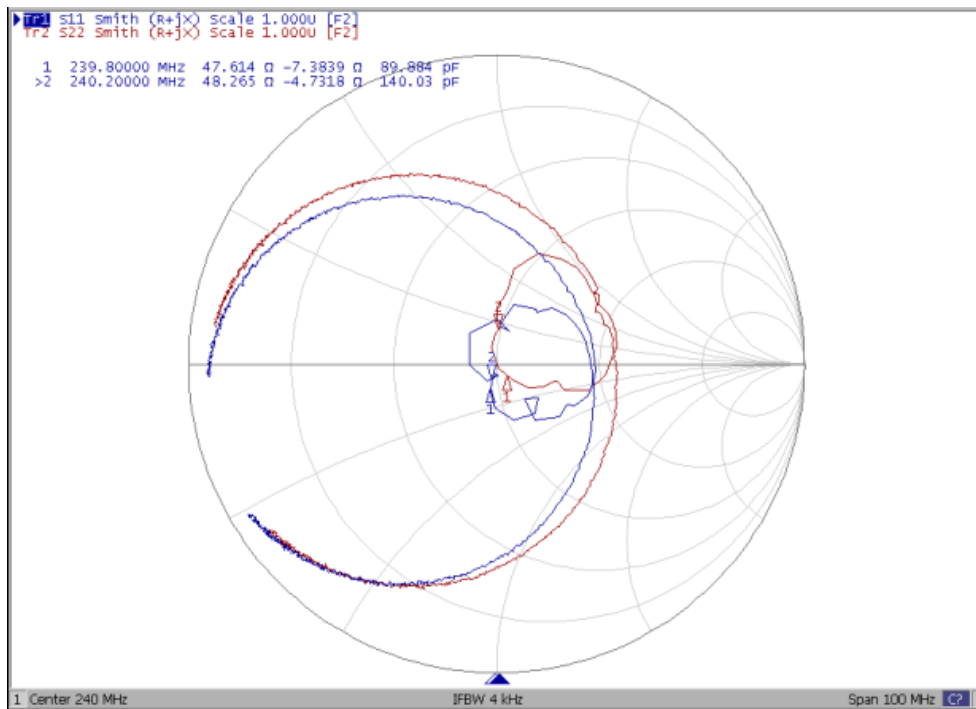
SAW Filter 240.0MHz
Part No: MA07210

Model: TB0309A
Rev. No: 3

3. Pass band Ripple and Group Delay Ripple



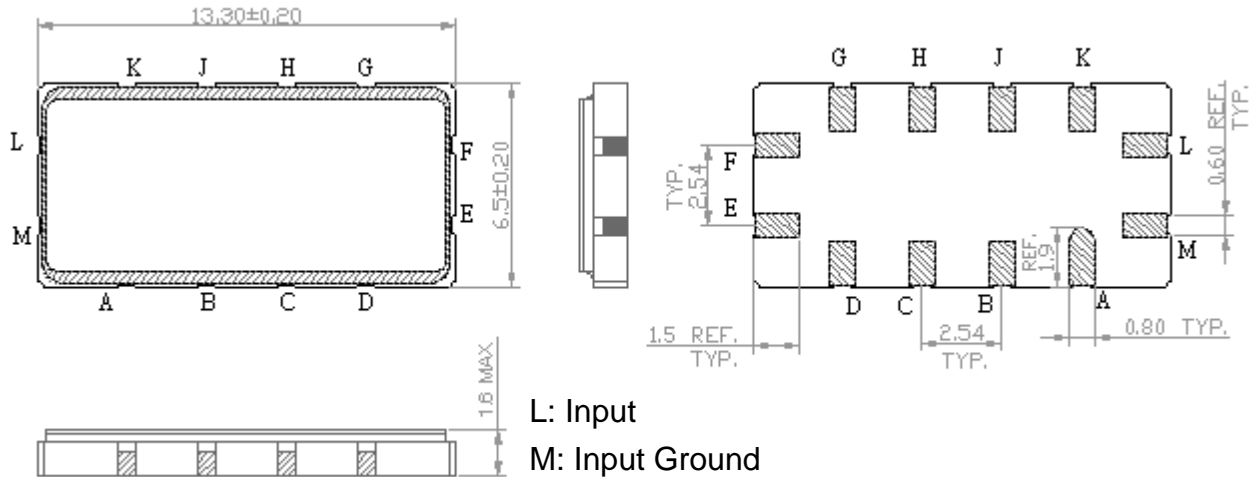
4. S11 & S22 Smith-Chart:



SAW Filter 240.0MHz
Part No: MA07210

Model: TB0309A
Rev. No: 3

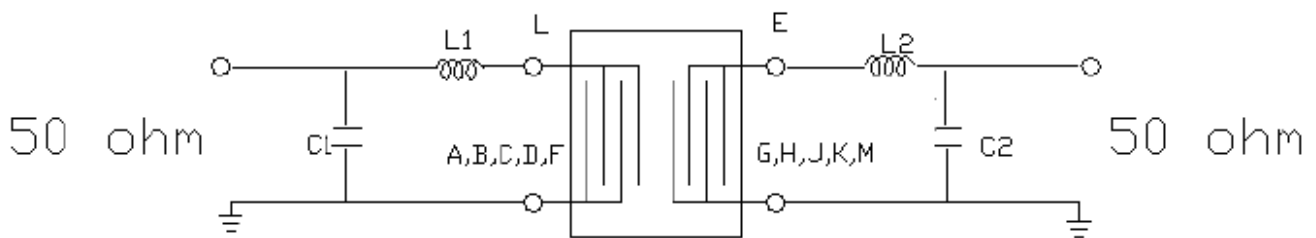
D. OUTLINE DRAWING:



- L: Input
 - M: Input Ground
 - E: Output
 - F: Output Ground
 - A, B, C, D, G, H, J, K: To be grounded
- Unit: mm

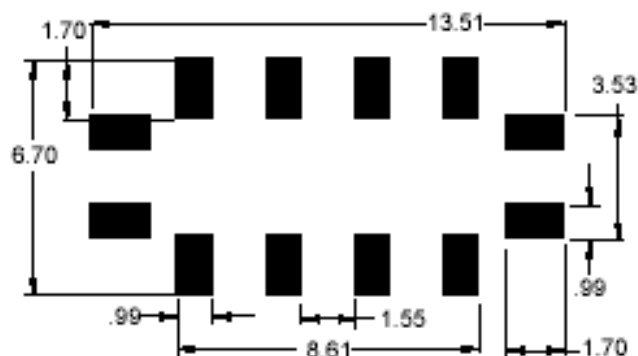
E. MEASUREMENT CIRCUIT:

Single end input 50 ohm to Single end output 50 ohm



$L1 = 36\text{nH}$, $C1 = 33\text{pF}$, $L2 = 27\text{nH}$, $C2 = 33\text{pF}$

F. PCB FOOTPRINT:

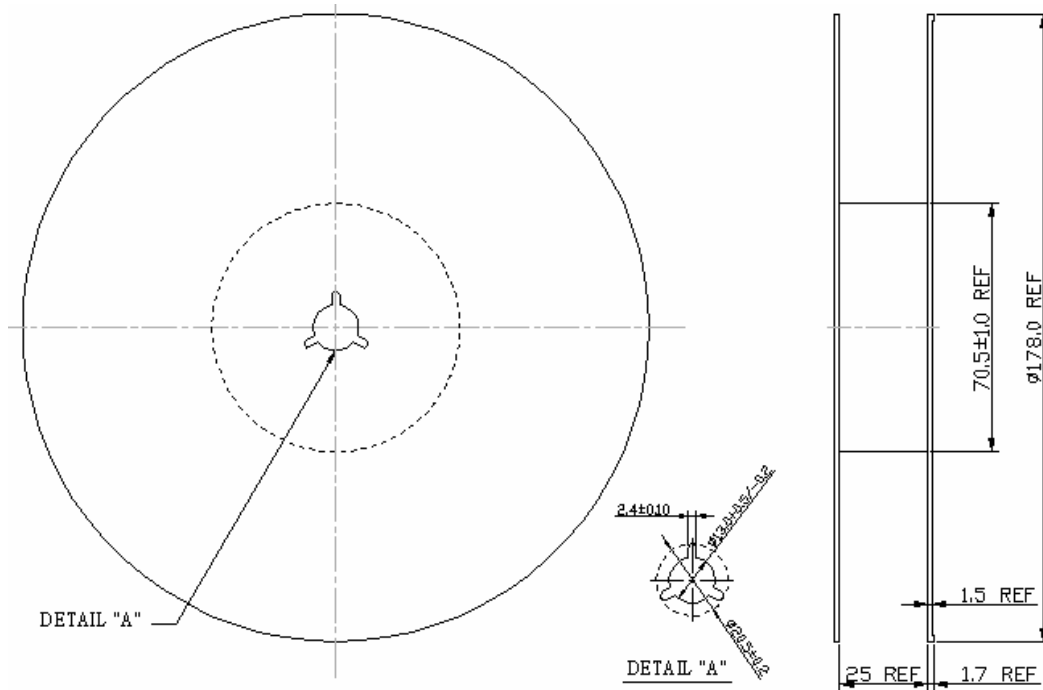


SAW Filter 240.0MHz
Part No: MA07210

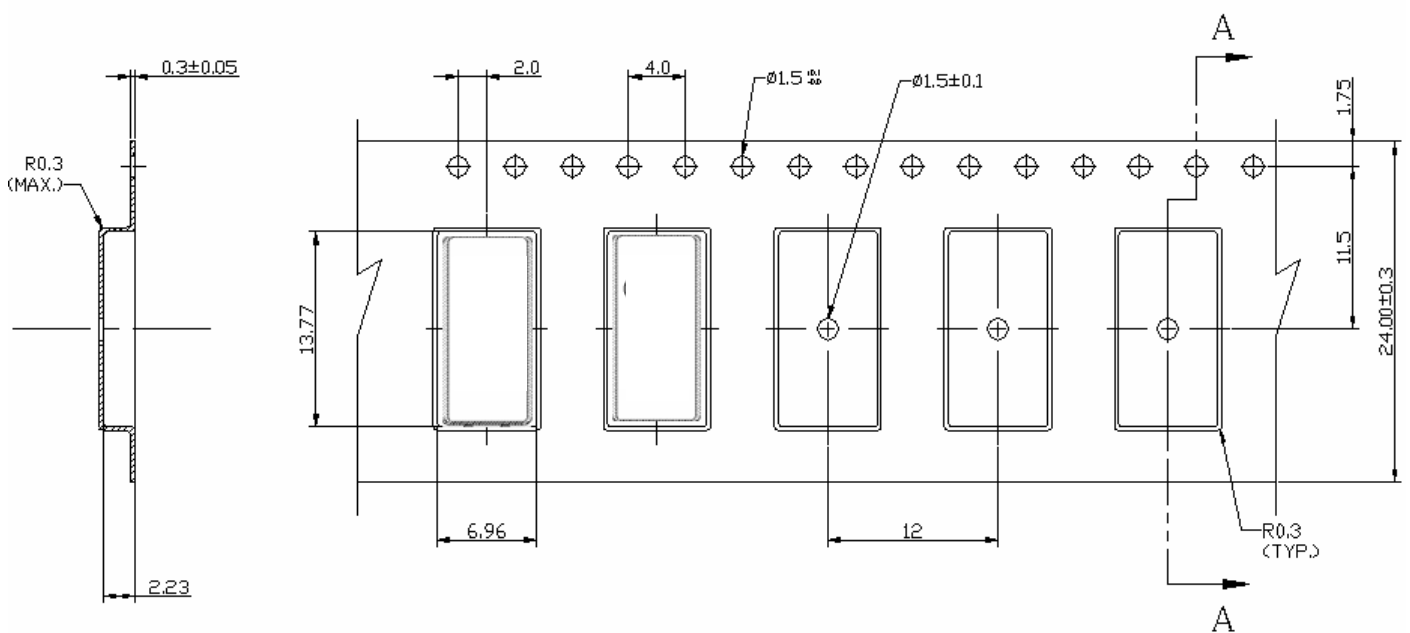
Model: TB0309A
Rev. No: 3

G. PACKING:

1. Reel Dimension (Please refer to FR-75D10 for packing quantity)



2. Tape Dimension



SAW Filter 240.0MHz
Part No: MA07210

Model: TB0309A
Rev. No: 3

H. RECOMMENDED REFLOW PROFILE:

