

SAW Filter 866.0MHz
Part No: MA07085

Model: TA0462A
Rev No: 2

A. MAXIMUM RATING:

1. Input Power Level: 10dBm
2. DC voltage: 3V
3. Operating Temperature: -10°C to 60°C
4. Storage Temperature: -40°C to +85°C

B. CHARACTERISTICS:

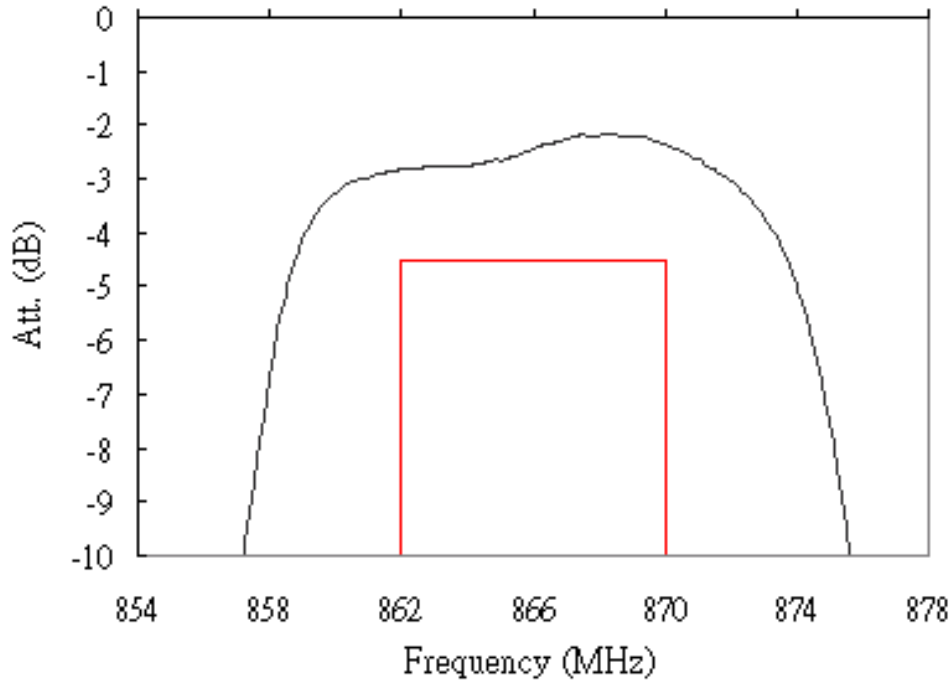
Item	Unit	Min.	Typ.	Max.
Center frequency F_c	MHz	-	866	-
Insertion loss 862 ~ 870MHz IL	dB	-	3.0	4.5
Amplitude ripple 862 ~ 870MHz	dB	-	0.8	2.1
Attenuation (Reference level from 0dB)				
770.0 ~ 780MHz	dB	40	49	-
815.0 ~ 825MHz	dB	40	49	-
837.5 ~ 847.5MHz	dB	30	38	-
Source impedance Z_s	Ω	-	50	-
Load impedance Z_L	Ω	-	50	-

SAW Filter 866.0MHz
Part No: MA07085

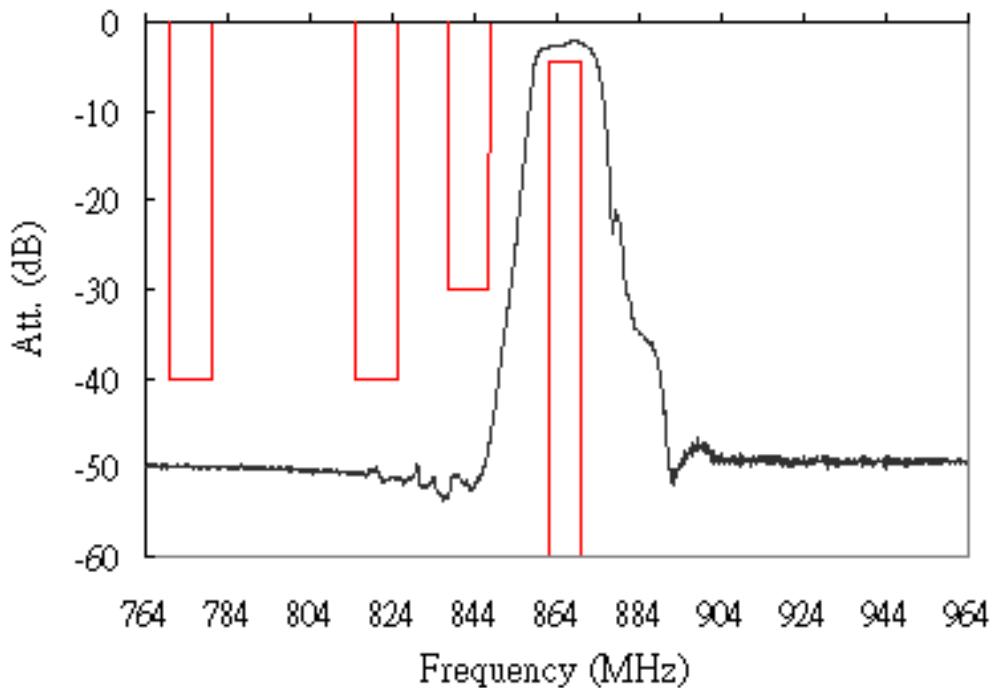
Model: TA0462A
Rev No: 2

C. FREQUENCY CHARACTERISTICS:

Transfer Function



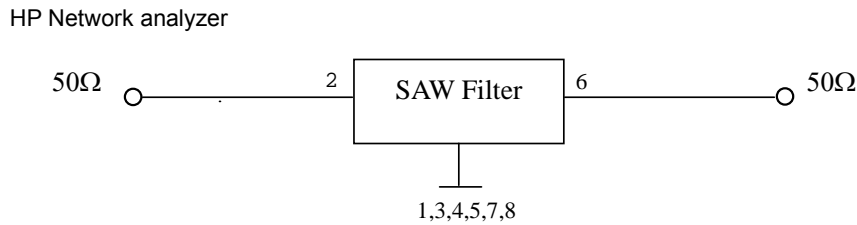
Wideband



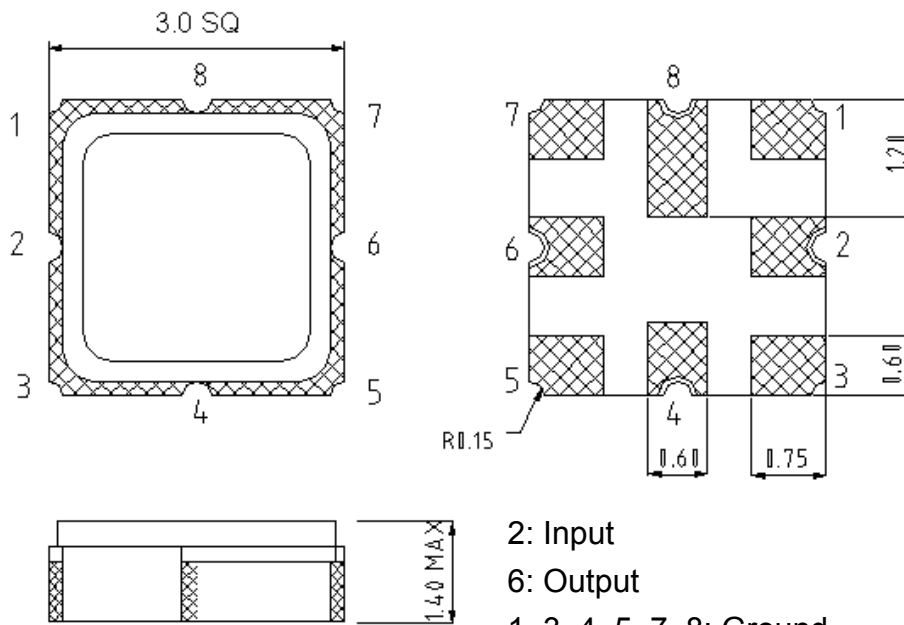
SAW Filter 866.0MHz
Part No: MA07085

Model: TA0462A
Rev No: 2

D. MEASUREMENT CIRCUIT:

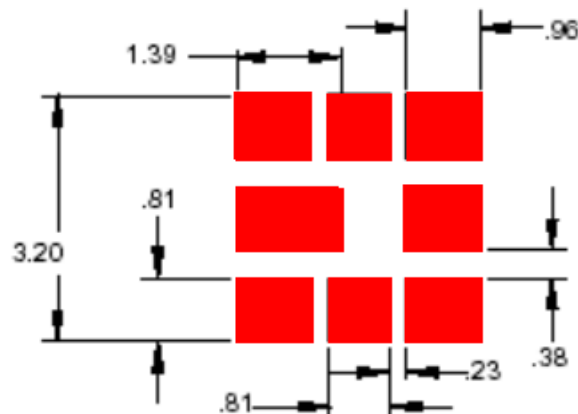


E. OUTLINE DRAWING:



2: Input
 6: Output
 1, 3, 4, 5, 7, 8: Ground
 Unit: mm

F. PCB FOOTPRINT:

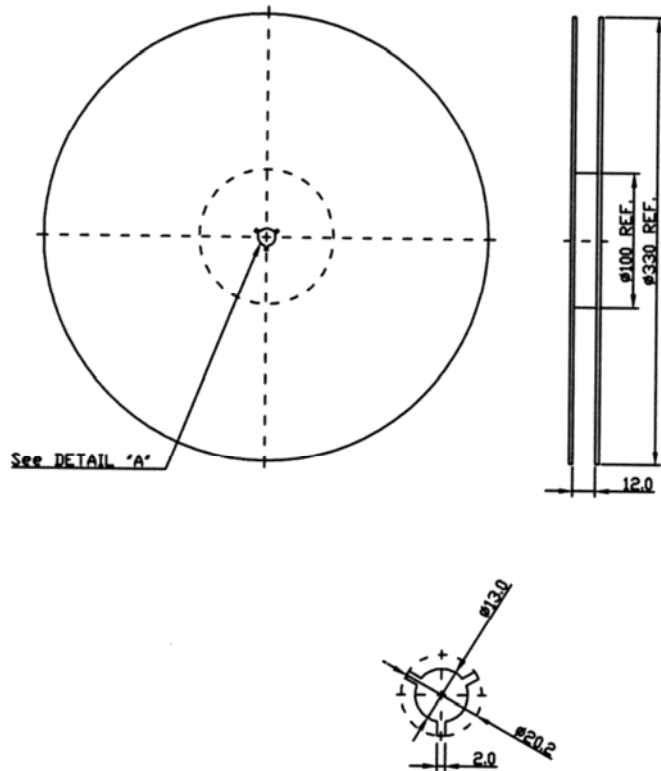


SAW Filter 866.0MHz
Part No: MA07085

Model: TA0462A
Rev No: 2

G. PACKING:

1. Reel Dimension



2. Tape Dimension

