

**SAW Filter 861.0MHz**

**Model: TA0452A**

**Part No: MA06359**

**REV. NO.: 1**

**A. MAXIMUM RATING:**

1. Input Power Level: 15 dBm
2. DC voltage: 5 V
3. Operating Temperature: -10°C to 60°C
4. Storage Temperature: -40°C to +85°C

**B. CHARACTERISTICS:**

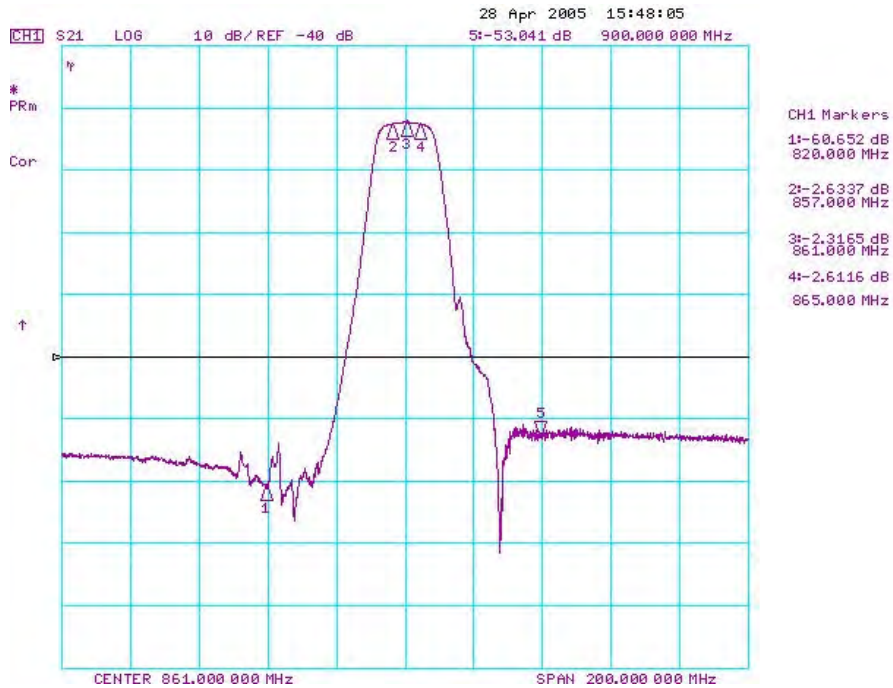
Item				Min.	Typ.	Max.
Center frequency	Fc	MHz		-	861	-
Insertion loss	857 ~ 865 MHz	IL	dB	-	2.7	4.2
Amplitude ripple	857 ~ 865 MHz		dB	-	0.4	2.0
VSWR	857 ~ 865 MHz			-	1.4	2.2
Attenuation						
	10.0 ~ 790.0	MHz	dB	40	55	-
	790.0 ~ 820.0	MHz	dB	36	54	-
	900.0 ~ 920.0	MHz	dB	35	50	-
	920.0 ~ 940.0	MHz	dB	36	51	-
	940.0 ~ 1000.0	MHz	dB	40	51	-
Source impedance	Zs		Ω	-	50	-
Load impedance	ZL		Ω	-	50	-

Note1. No matching network required for operation at 50Ω

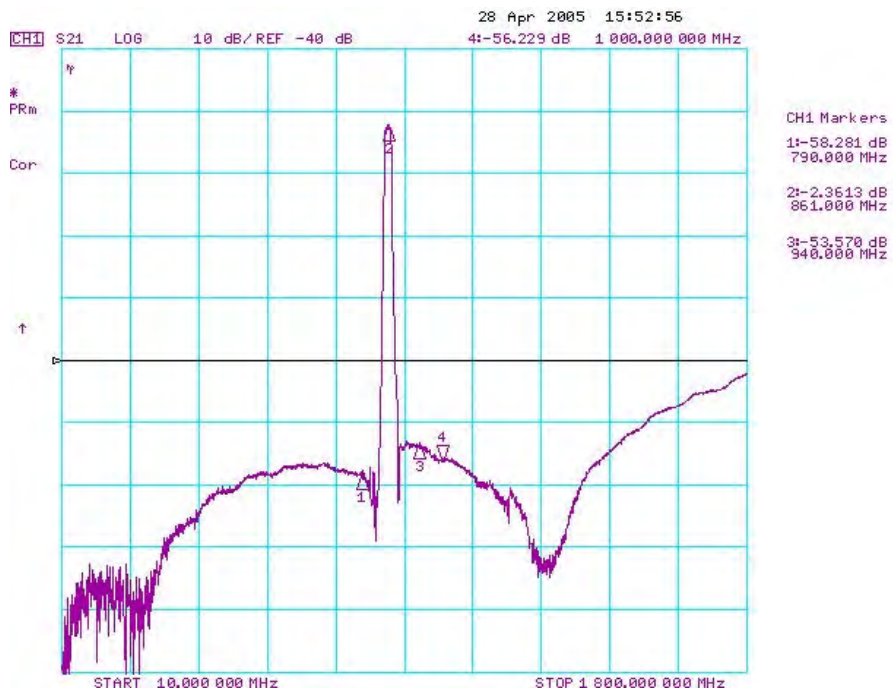
**SAW Filter 861.0MHz**  
**Part No: MA06359**

**Model: TA0452A**  
**REV. NO.: 1**

**C. TRANSFER FUNCTION:**



**Wideband**

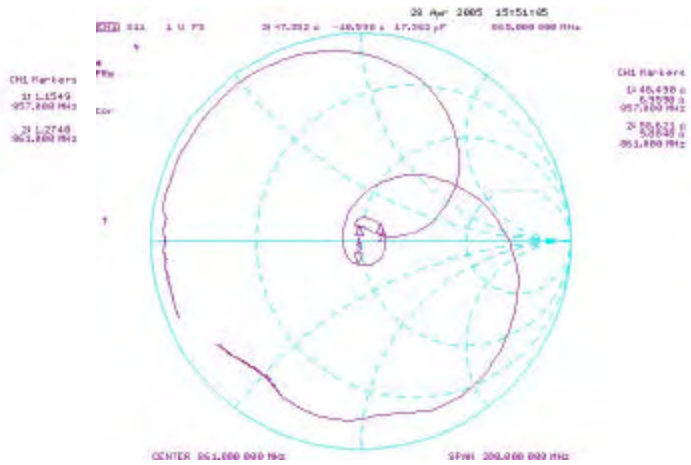
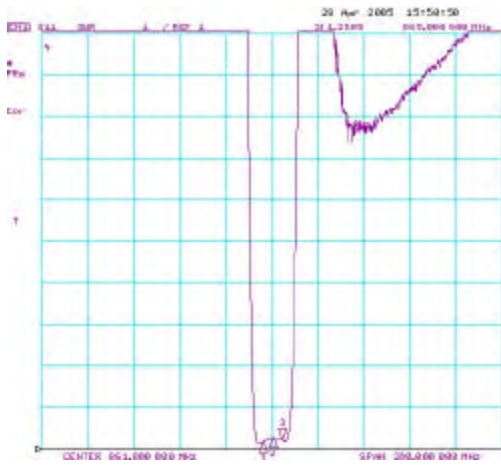


**SAW Filter 861.0MHz**  
**Part No: MA06359**

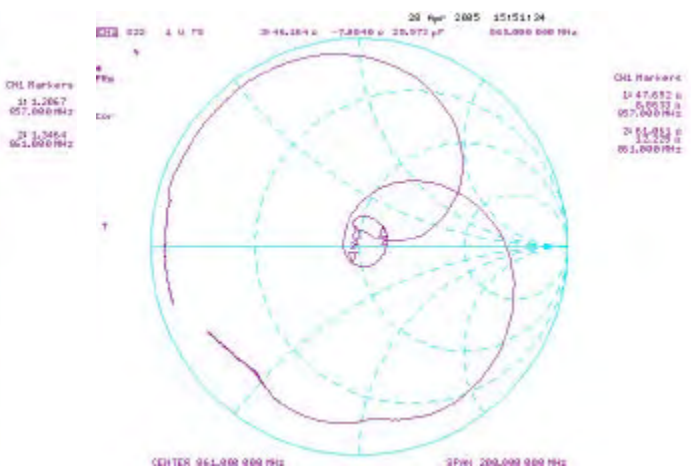
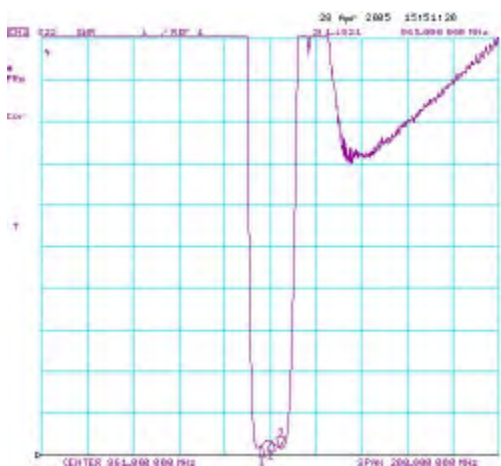
**Model: TA0452A**  
**REV. NO.: 1**

**D. REFLECTION FUNCTIONS:**

S11



S22



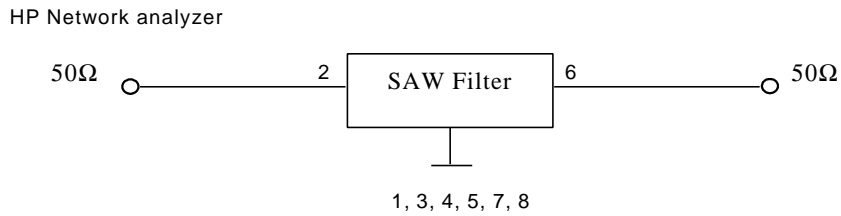
**SAW Filter 861.0MHz**

**Model: TA0452A**

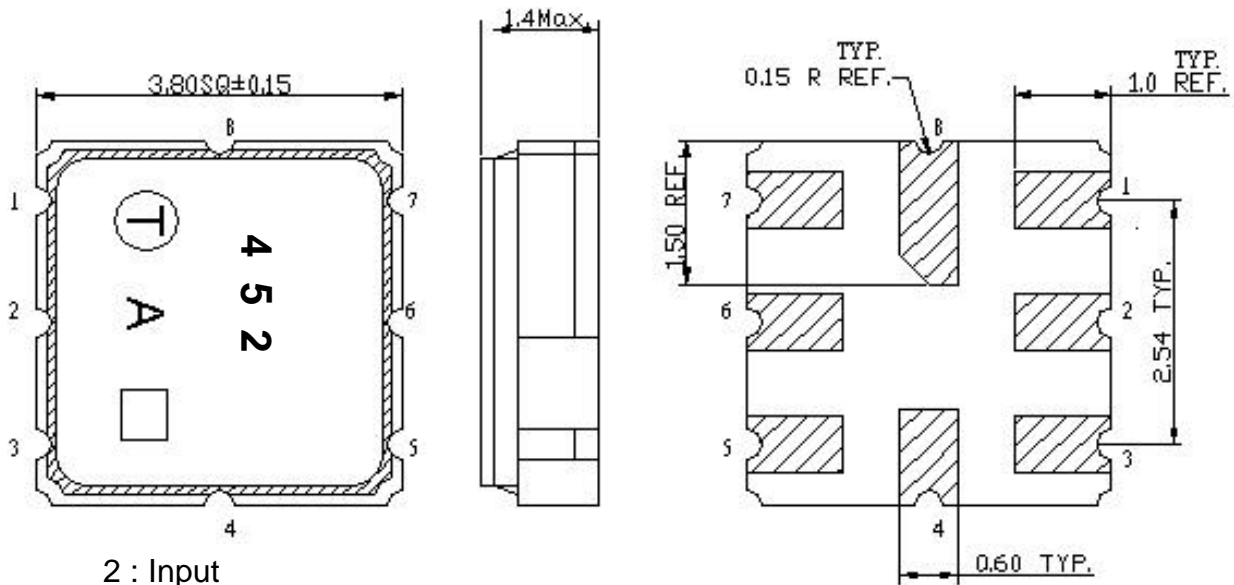
**Part No: MA06359**

**REV. NO.: 1**

**E. MEASUREMENT CIRCUIT:**

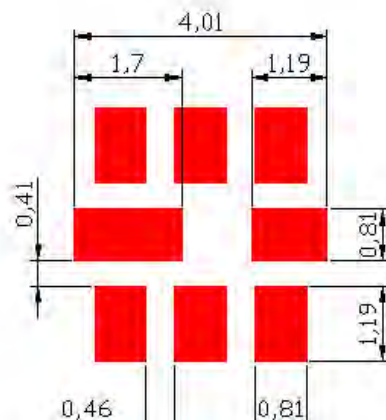


**F. OUTLINE DRAWING:**



2 : Input  
 6: Output  
 1,3,4,5,7,8: Ground  
 Unit: mm

**G. PCB FOOTPRINT:**

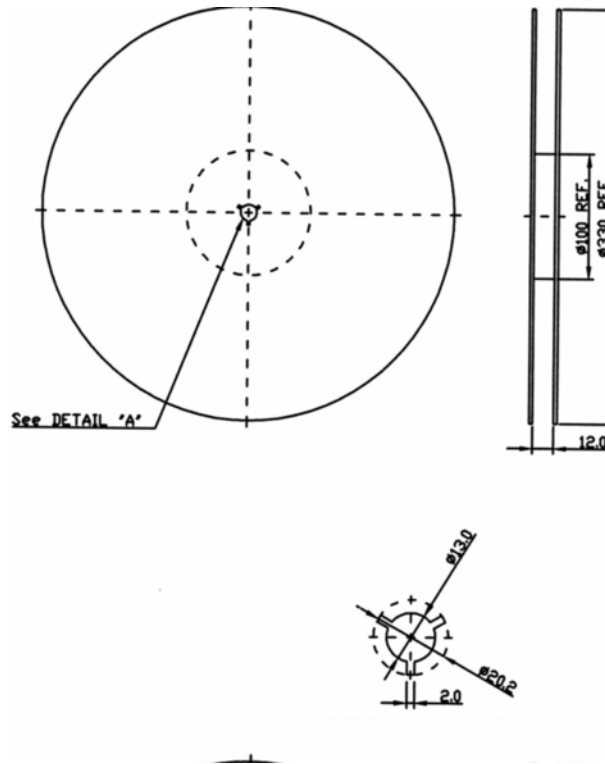


**SAW Filter 861.0MHz**  
**Part No: MA06359**

**Model: TA0452A**  
**REV. NO.: 1**

**H. PACKING:**

**1. REEL DIMENSION**



**2. TAPE DIMENSION**

