

SAW Filter 1350.0MHz
Part No: MA06191

Model: TA0332A
Rev No: 1

A. MAXIMUM RATING:

1. Input Power Level: 10 dBm
2. DC voltage: 3 V
3. Operating Temperature: -25°C to +85°C
4. Storage Temperature: -40°C to +85°C

B. ELECTRICAL CHARACTERISTICS:

Item	Unit	Min.	Typ.	Max.
Center Frequency Fc	MHz	-	1350	-
Insertion Loss 1342.5 ~ 1357.5MHz	dB	-	2.6	4.5
Absolute Group delay 1350MHz	ns	-	22	50
Group delay variation Fc ± 4MHz	ns	-	7	30
Phase variation Fc ± 4MHz	Deg	-	2.5	15
Amplitude ripple (p-p) Fc ± 4MHz	dB	-	0.2	1.3
Rejection				
Fc -41MHz	dB	10	33	-
Fc +41MHz	dB	10	16	-
Fc -60MHz	dB	30	57	-
Fc +60MHz	dB	26	34	-
Fc -140MHz	dB	30	60	-
Fc +140MHz	dB	30	52	-
Fc -250MHz	dB	38	60	-
Fc +250MHz	dB	38	47	-
Source impedance Z _S	Ω	-	50	-
Load impedance Z _L	Ω	-	50	-

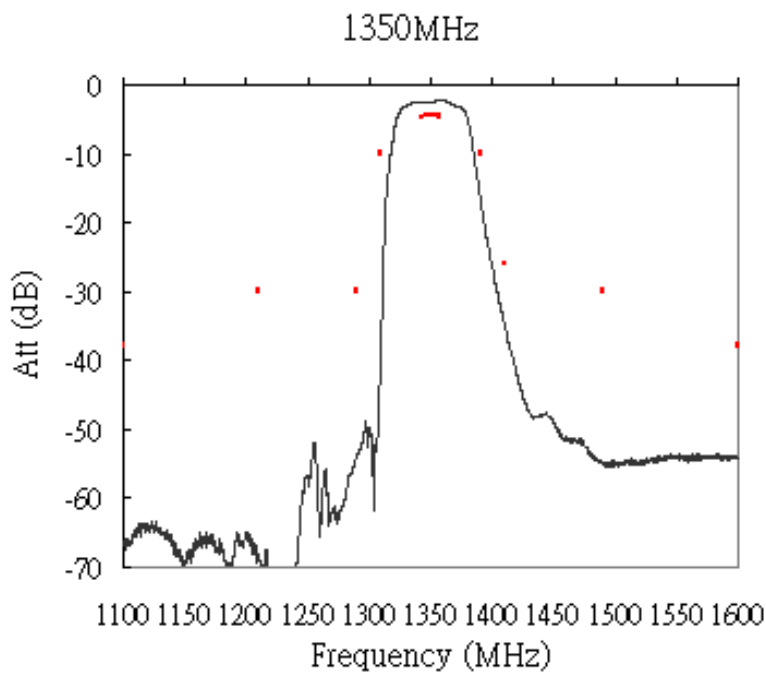
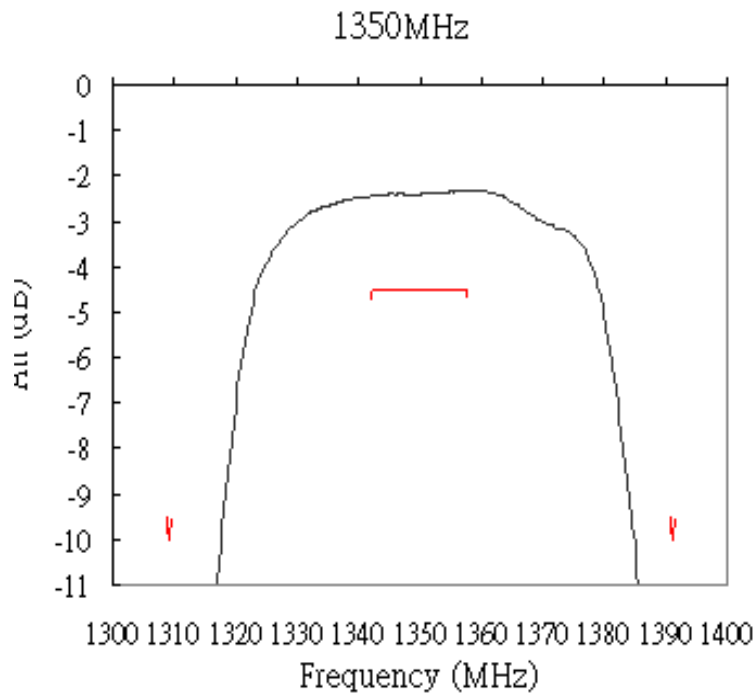
Note: No matching network required for operation at 50Ω

SAW Filter 1350.0MHz
Part No: MA06191

Model: TA0332A
Rev No: 1

C. FREQUENCY CHARACTERISTICS:

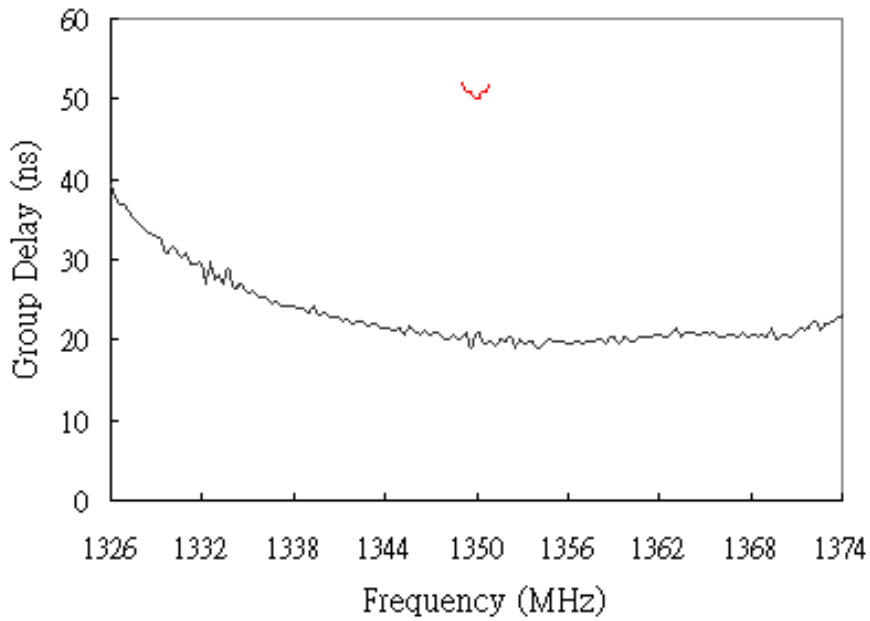
Transfer Function



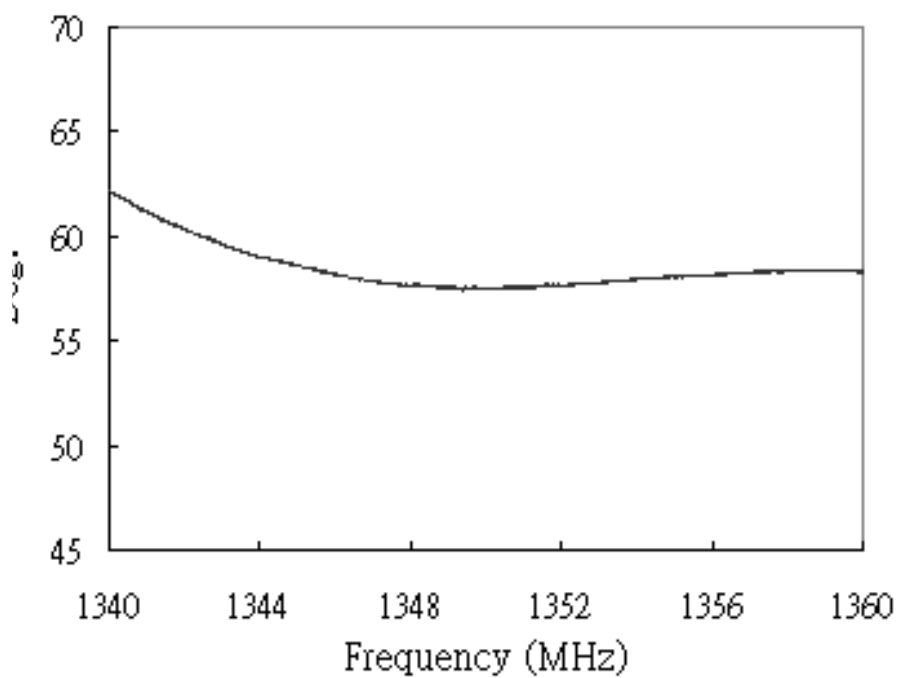
SAW Filter 1350.0MHz
Part No: MA06191

Model: TA0332A
Rev No: 1

Group Delay



Phase linearity

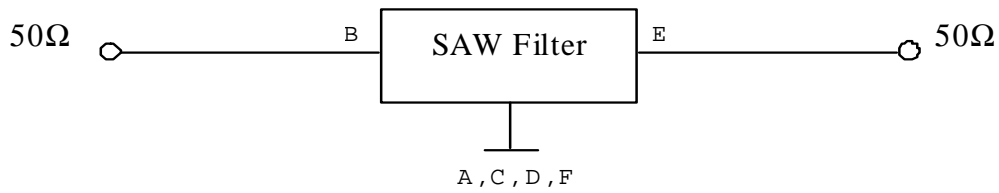


SAW Filter 1350.0MHz
Part No: MA06191

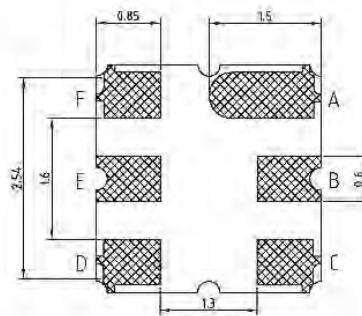
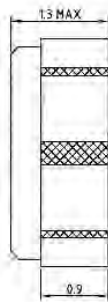
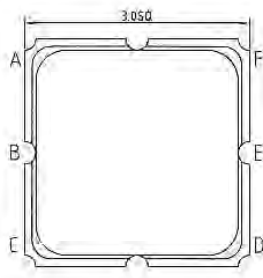
Model: TA0332A
Rev No: 1

D. MEASUREMENT CIRCUIT:

HP Network analyzer



E. OUTLINE DRAWING:



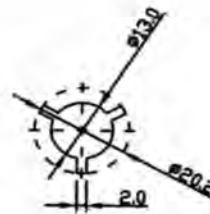
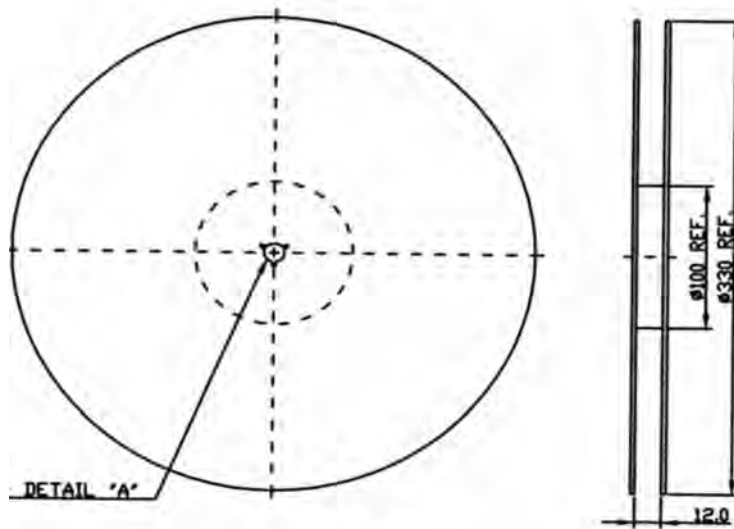
B: Input
E: Output
A, C, D, F: Ground
Unit: mm

SAW Filter 1350.0MHz
Part No: MA06191

Model: TA0332A
Rev No: 1

F. PACKING:

1. REEL DIMENSION



2. TAPE DIMENSION

