

70.0MHz SAW Filter
Part No: MA05987

Model: TB0227A
REV NO.: 2

A. MAXIMUM RATING:

1. Input Power Level: +20 dBm
2. Operating Temperature: -10°C to +70°C
3. Storage Temperature: -40°C to +85°C

B. ELECTRICAL CHARACTERISTICS:

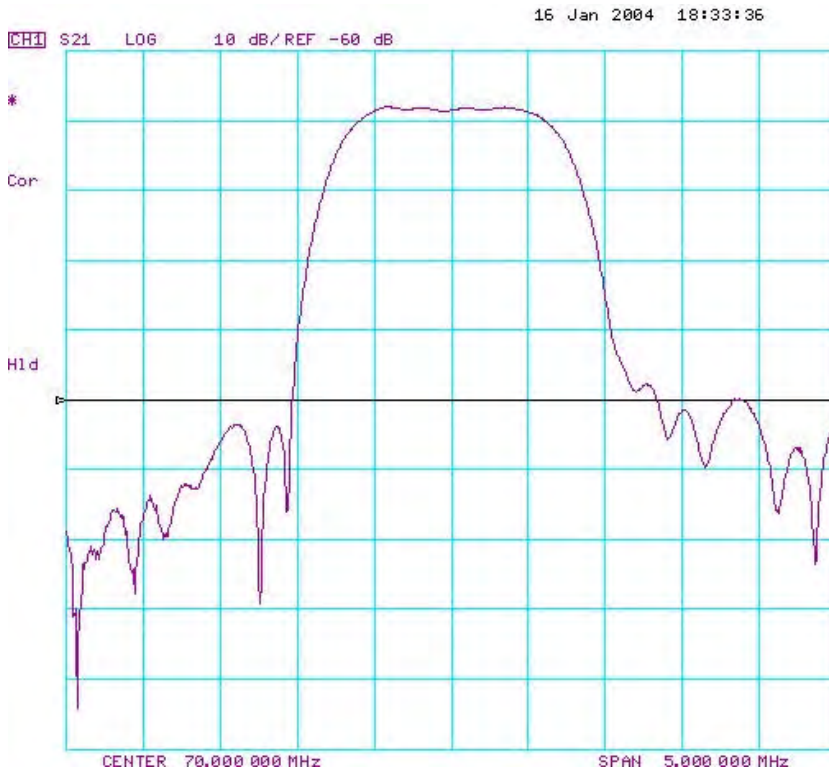
Parameters	Unit	Min.	Typical	Max.
Center frequency, F_c	MHz	69.97	70.00	70.03
Insertion Loss, IL	dB	-	18.2	20.0
1 dB Bandwidth	MHz	0.95	1.10	-
3 dB Bandwidth	MHz	1.1	1.3	-
35 dB Bandwidth	MHz	-	2.05	2.20
Relative Attenuation:				
10 to 68 MHz	dB	40	45	-
72 to 140 MHz	dB	40	45	-
Amplitude ripple within $F_c \pm 0.5$ MHz	dB	-	0.5	0.8
Group delay ripple within $F_c \pm 0.5$ MHz	nsec	-	194	220
Absolute Delay	usec	-	2.04	-
Substrate Material	-	-	Quartz	-

70.0MHz SAW Filter
Part No: MA05987

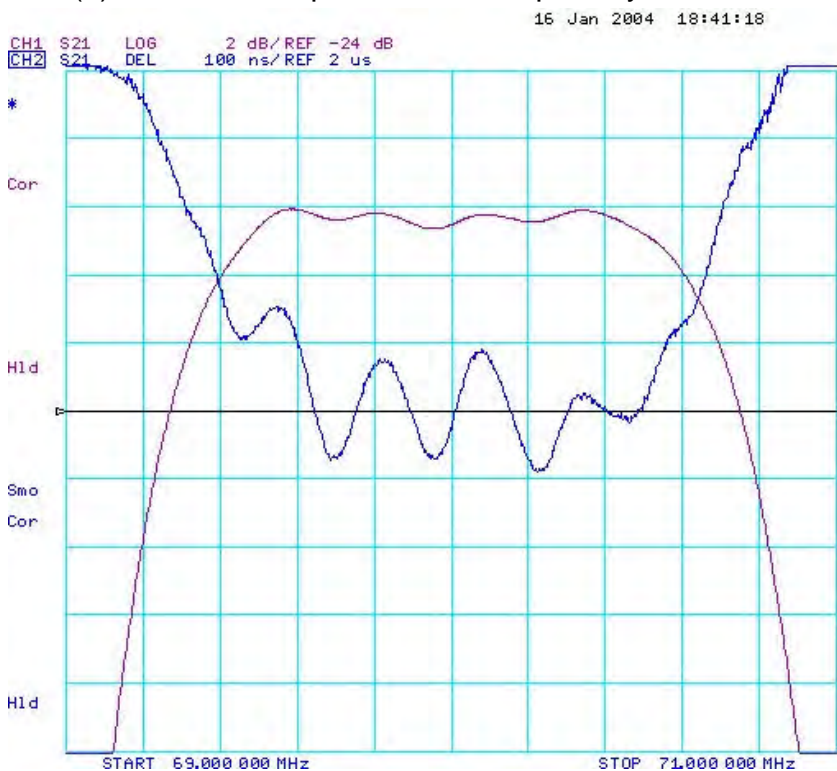
Model: TB0227A
REV NO.: 2

C. FREQUENCY CHARACTERISTICS:

(1) Frequency Response



(2) Passband response and Group Delay Variation

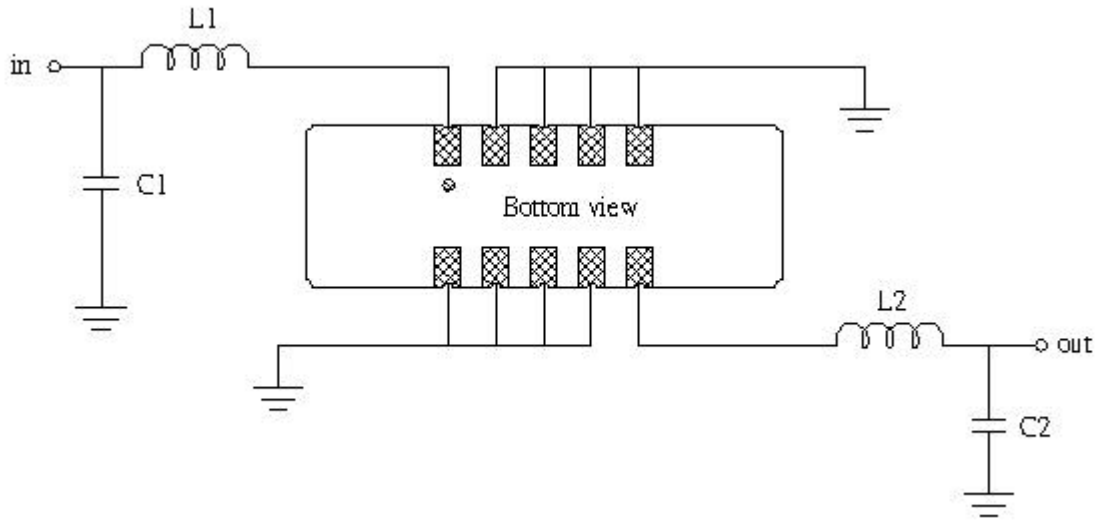


70.0MHz SAW Filter
Part No: MA05987

Model: TB0227A
REV NO.: 2

D. MEASUREMENT CIRCUIT:

Source and load impedance: 50 Ω



L1=540 nH, C1=62 pF, L2=440 nH, C2=39 pF,

E. OUTLINE DRAWING:

