

**280 MHz SAW Filter for WLAN**  
**Part No: MA05396**

**Model: TB0137A**  
**REV NO.: 2**

**A. MAXIMUM RATING:**

1. Input Power Level: 10 dBm
2. Operating Temperature: -10°C to 85°C
3. Storage Temperature: -40°C to 85°C

**B. ELECTRICAL CHARACTERISTICS :**

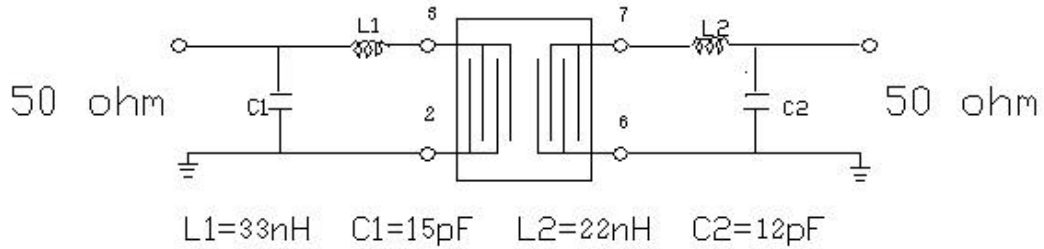
| Item                                      | Unit | Min. | Type. | Max. | Note |
|---|------|------|-------|------|------|
| Center frequency, <b>Fc</b>               | MHz  | -    | 280   | -    |      |
| Insertion Loss, <b>IL</b>                 | dB   | -    | 8.3   | 10   |      |
| Passband width, <b>BW3</b>                | MHz  | 18.5 | 19.8  | 23   |      |
| Amplitude Ripple in Fc 9MHz               | dB   | -    | 2     | 3    |      |
| Group delay ripple in Fc 9MHz             | nS   | -    | 60    | 100  |      |
| Attenuation:(Reference level from Min IL) |      |      |       |      |      |
| Fc -60 to -40MHz                          | dB   | 40   | 46    | -    |      |
| Fc -40 to -22MHz                          | dB   | 37   | 39    | -    |      |
| Fc -22 to -16MHz                          | dB   | 30   | 39    | -    |      |
| Fc +16 to +22MHz                          | dB   | 25   | 33    | -    |      |
| Fc +22 to +40MHz                          | dB   | 34   | 36    | -    |      |
| Fc +40 to +60MHz                          | dB   | 40   | 45    | -    |      |

**280 MHz SAW Filter for WLAN**  
**Part No: MA05396**

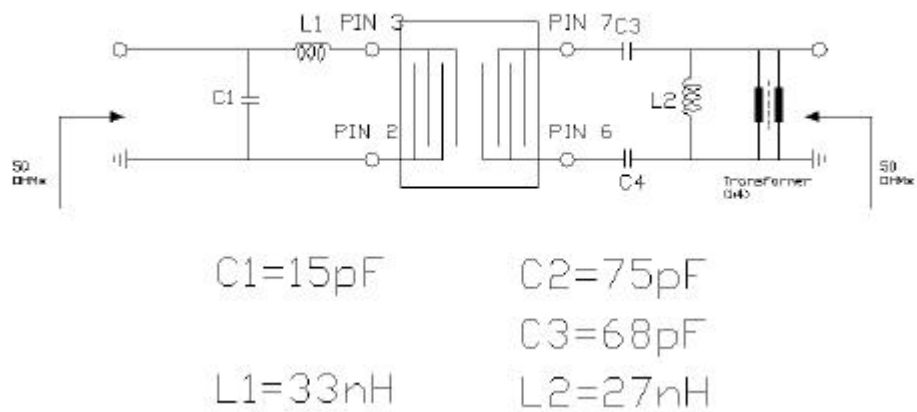
**Model: TB0137A**  
**REV NO.: 2**

**C. MATCHING CONFIGURATION:**

1. For Single End In, Single End Out



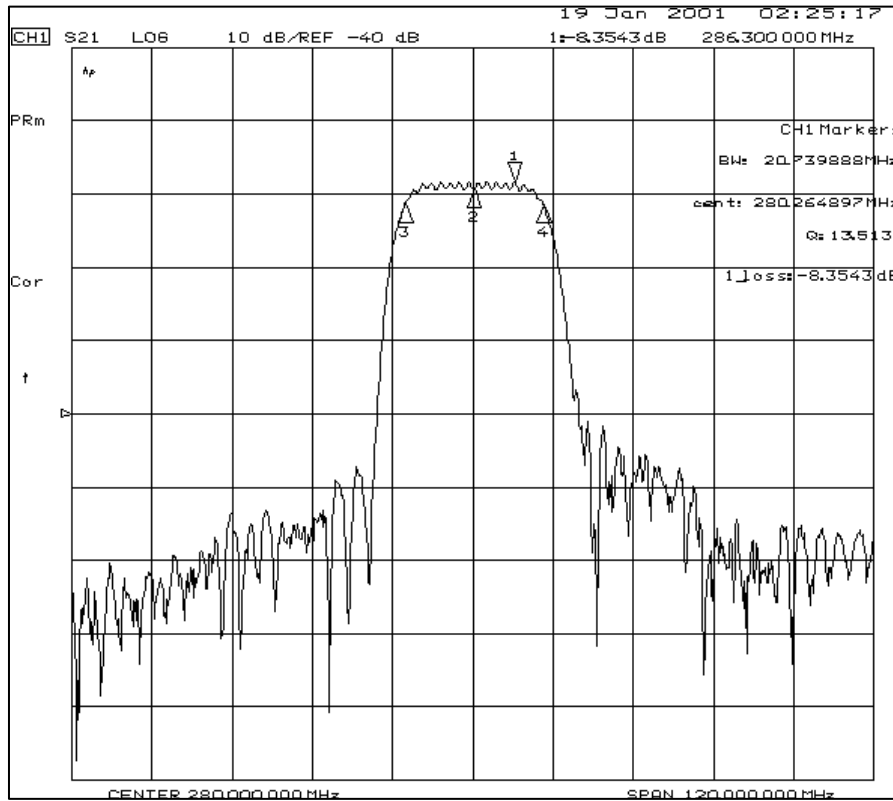
2. For Single End In, Balance Out



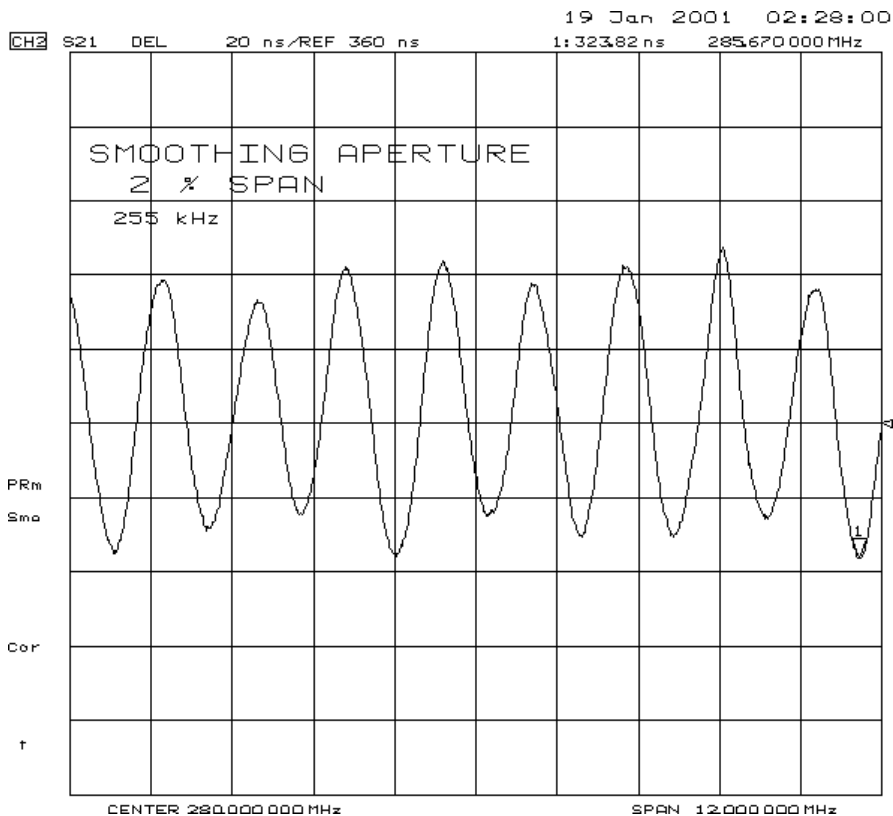
**280 MHz SAW Filter for WLAN**  
**Part No: MA05396**

**Model: TB0137A**  
**REV NO.: 2**

**D. FREQUENCY CHARACTERISTICS (For Single Un ,Balance out Type):**



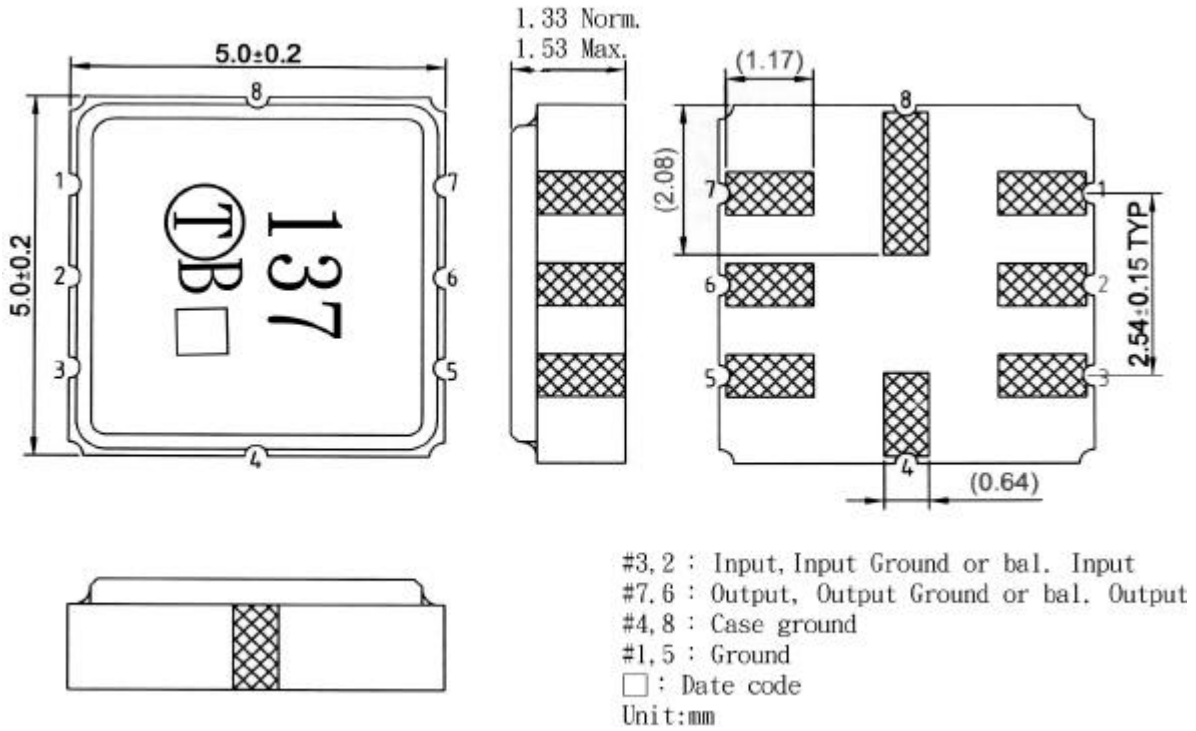
Note2: Insertion loss of balun transformers is around -0.7dB.



**280 MHz SAW Filter for WLAN**  
**Part No: MA05396**

**Model: TB0137A**  
**REV NO.: 2**

**E. OUTLINE DRAWING:**

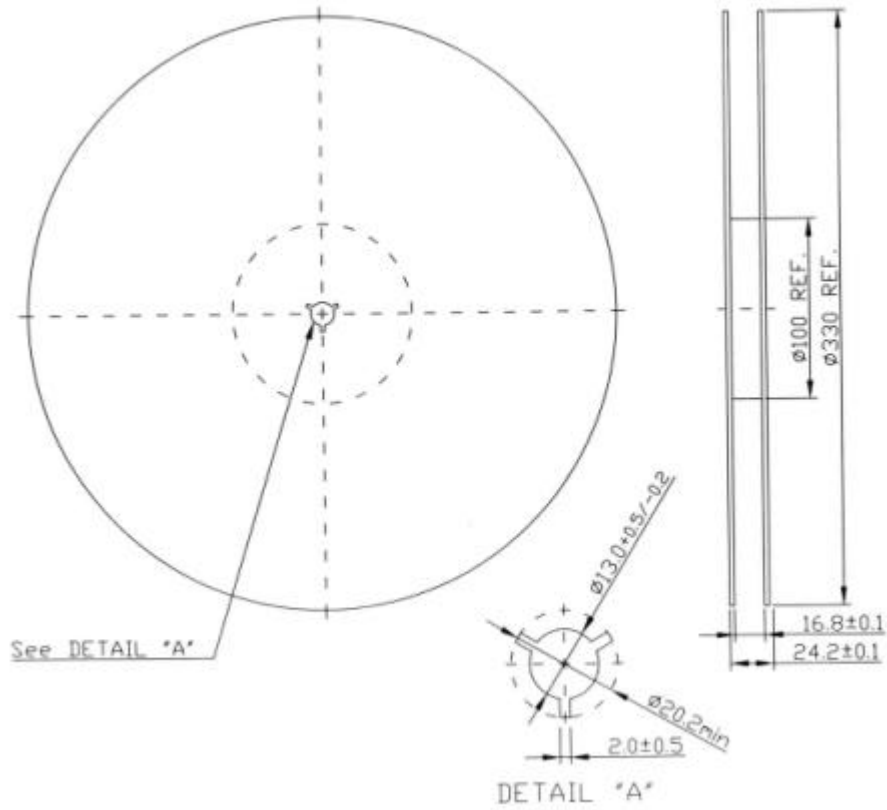


**280 MHz SAW Filter for WLAN**  
**Part No: MA05396**

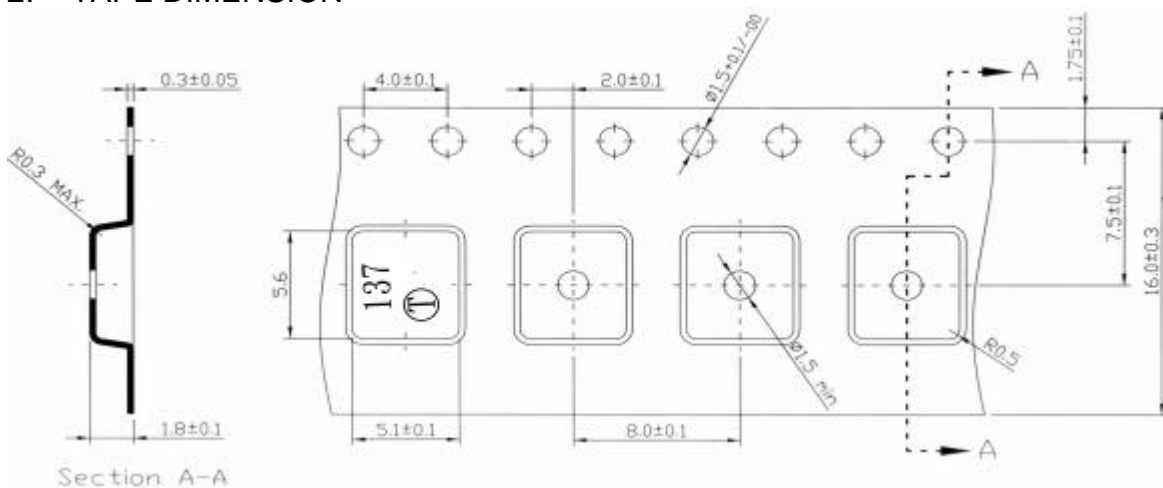
**Model: TB0137A**  
**REV NO.: 2**

**F. PACKING:**

**1. REEL DIMENSION**



**2. TAPE DIMENSION**



$A_o = 5.30 \pm 1 \text{ mm}$   
 $B_o = 5.30 \pm 0.2 / -0.0 \text{ mm}$   
 $K_o = 2.0 \pm 0.1 \text{ mm}$