
772.420 MHz SAW Resonator**Model: TC0187A****Part No: MA05390****REV NO.: 1**

A. FEATURES:

1. 1-Port Resonator.

B. MAXIMUM RATING:

1. Input Power Level: 0 dBm
2. DC voltage: 12 V
3. Operating Temperature: -40°C to +85°C
4. Storage Temperature: -40°C to +85°C

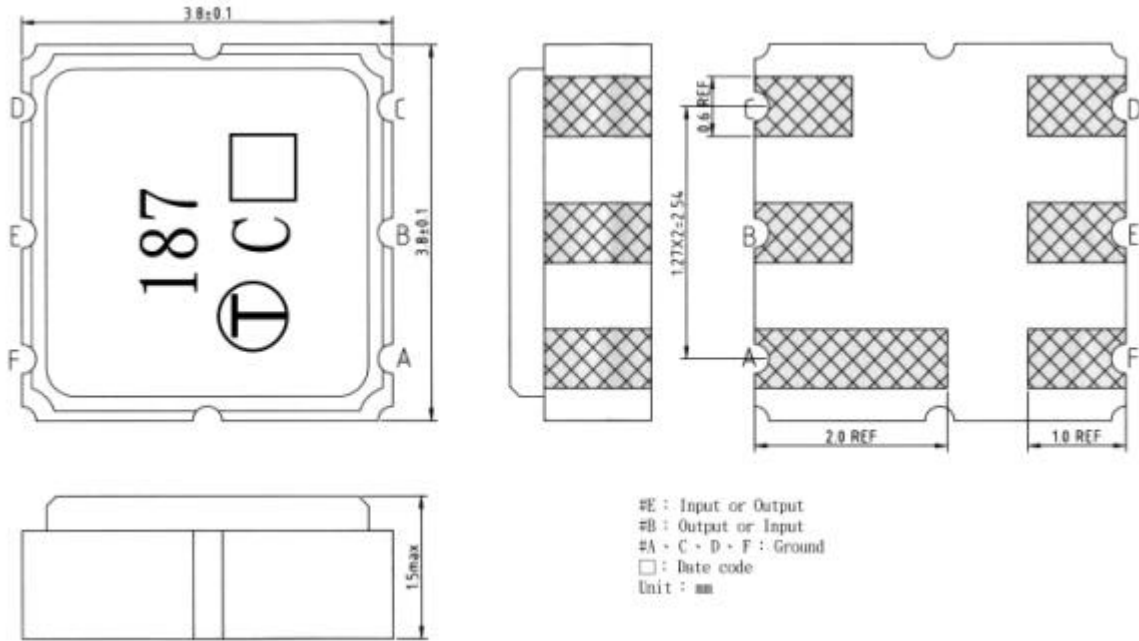
C. ELECTRICAL CHARACTERISTICS:

Characteristic	Units	Minimum	Typical	Maximum
Center frequency Fr	MHz	772.295	772.420	772.545
Insertion Loss IL	dB	-	1.0	2.0
Equivalent Elements				
Motional capacitance C1	fF	-	1.69	-
Motional inductance L1	H	-	25.15	-
Motional resistance R1	Ohm	-	14.55	-
Parallel capacitance Co	pF	-	2.81	-
Temp.coeff.	ppm/c*2	-	0.032	-
Turnover To	deg.C	20	-	50
Package size		SMD 3.8X3.8X1.4mm		

772.420 MHz SAW Resonator
Part No: MA05390

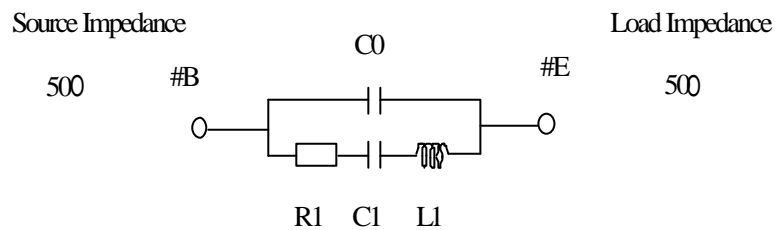
Model: TC0187A
REV NO.: 1

D. OUTLINE DRAWING:



E. EQUIVALENT CIRCUIT:

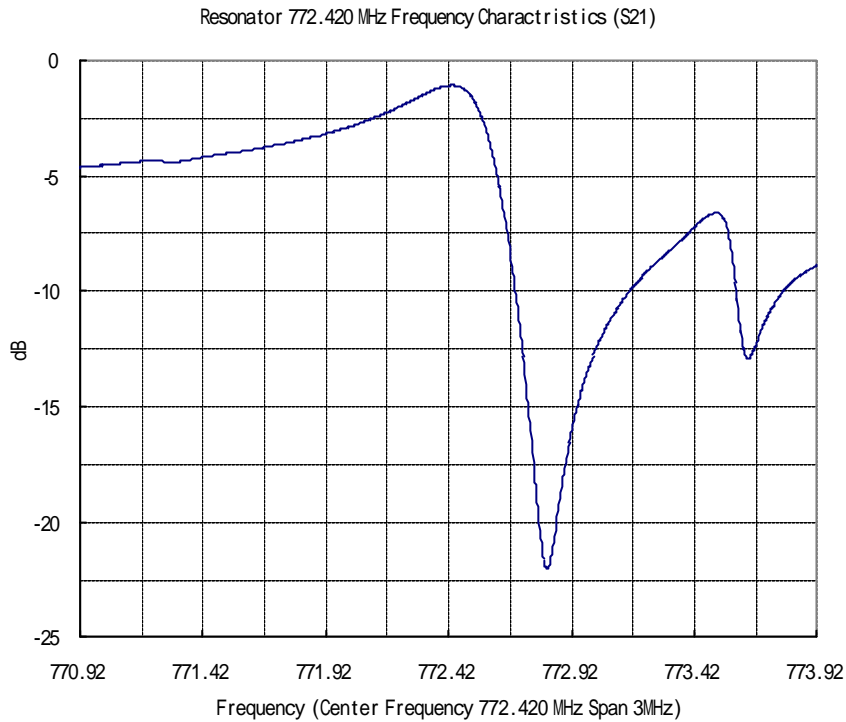
One-Port Resonator:



772.420 MHz SAW Resonator
Part No: MA05390

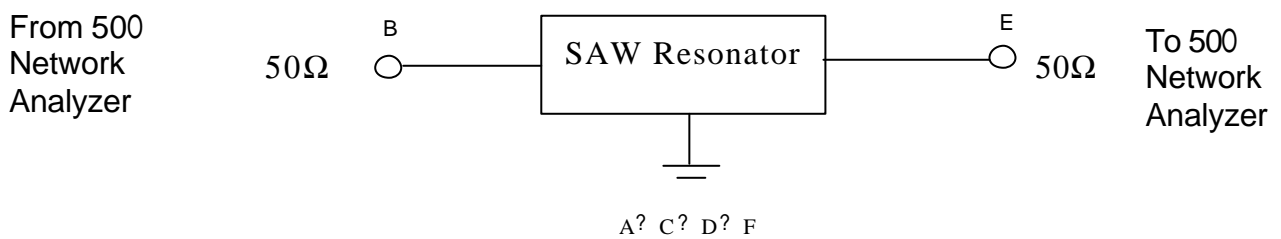
Model: TC0187A
REV NO.: 1

F. FREQUENCY CHARACTERISTICS:



G. TEST CIRCUIT:

Network analyzer

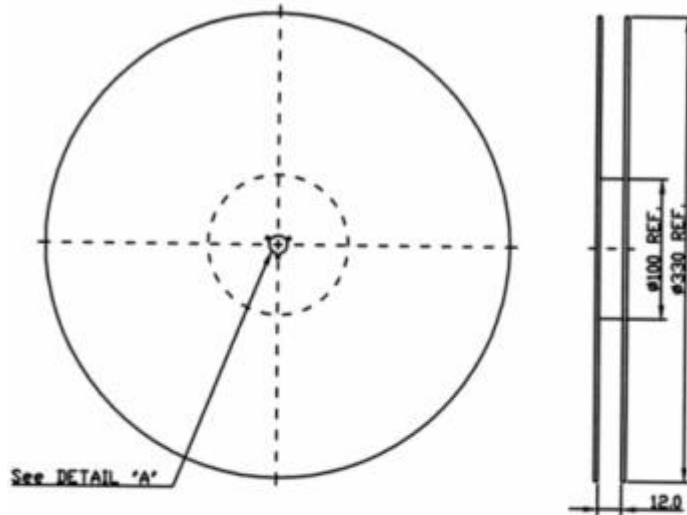


772.420 MHz SAW Resonator
Part No: MA05390

Model: TC0187A
REV NO.: 1

H. PACKING:

1. REEL DIMENSION



2. TAPE DIMENSION

