

SAW Filter 1950.0MHz
Part No: MA07352

Model: TA0382A
Rev No: 1

A. MAXIMUM RATING:

1. Operating Temperature: -10°C ~ +85°C
2. Storage Temperature: -40°C ~ +95°C

B. ELECTRICAL CHARACTERISTICS:

Balanced to Singled operation

Terminating source impedance: $Z_S = 200\Omega // 18nH$

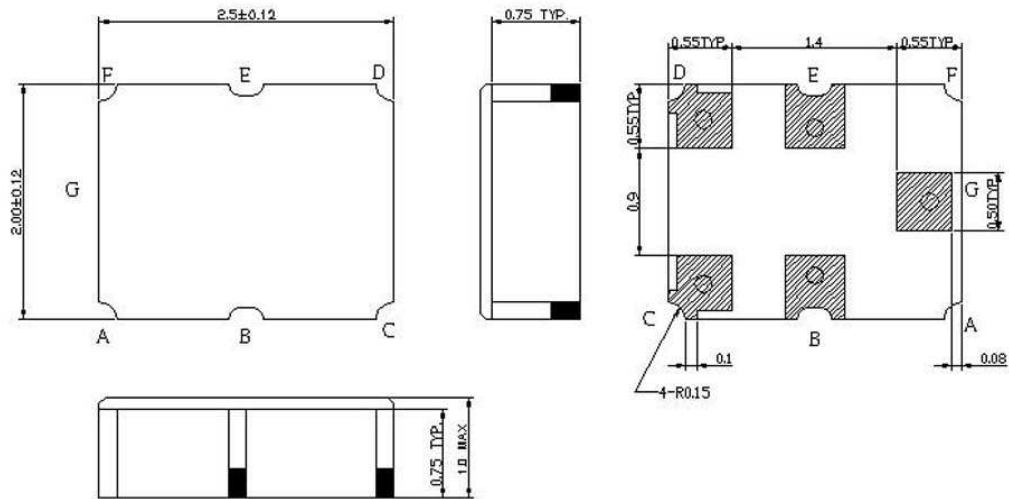
Terminating load impedance: $Z_L = 50\Omega$

Item	Min.	Typ.	Max.
Center frequency Fc MHz	-	1950	-
Insertion loss (1920 ~ 1980MHz) IL (dB)	-	2.6	4.0
Ripple (1920 ~ 1980MHz) (dB)	-	0.5	1.8
Input VSWR (1920 ~ 1980MHz)	-	1.8	2.4
Output VSWR (1920 ~ 1980MHz)	-	2.0	2.4
0 ~ 1805MHz (dB)	20	30	-
1805 ~ 1860MHz (dB)	22	36	-
1860 ~ 1880MHz (dB)	15	21	-
2110 ~ 2170MHz (dB)	20	25	-
2170 ~ 2670MHz (dB)	25	38	-
2680 ~ 2740MHz (dB)	20	39	-
3840 ~ 3960MHz (dB)	15	52	-
5760 ~ 5940MHz (dB)	15	44	-
$ S_{21} / S_{31} $ (1920 ~ 1980MHz) (dB)	-2.2	0	2.2
$\Phi(S_{21}) - \Phi(S_{31}) + 180^\circ$ (1920 ~ 1980MHz) deg	-18	0	18

SAW Filter 1950.0MHz
Part No: MA07352

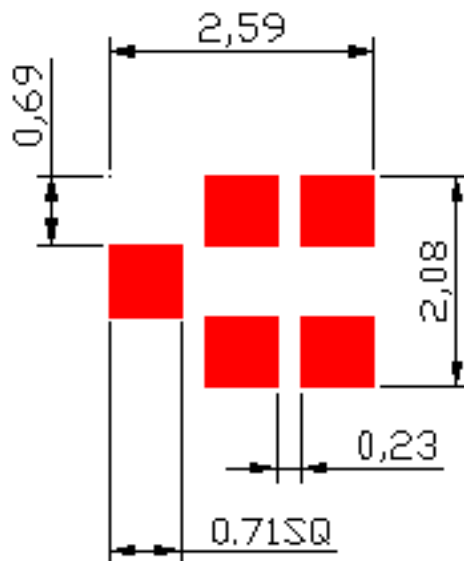
Model: TA0382A
Rev No: 1

C. OUTLINE DRAWING:



G: Unbalance output
 C, D: Balance input
 B, E: Ground
 Unit: mm

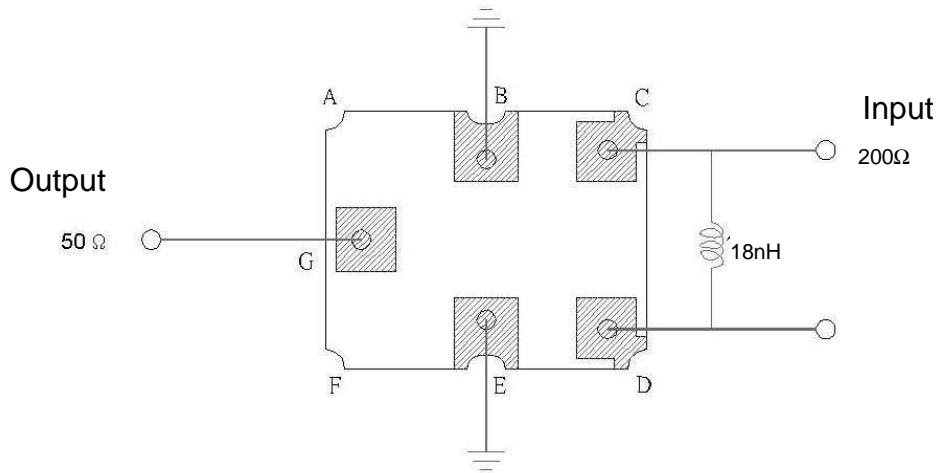
D. PCB FOOTPRINT:



SAW Filter 1950.0MHz
Part No: MA07352

Model: TA0382A
Rev No: 1

E. MEASUREMENT CIRCUIT:

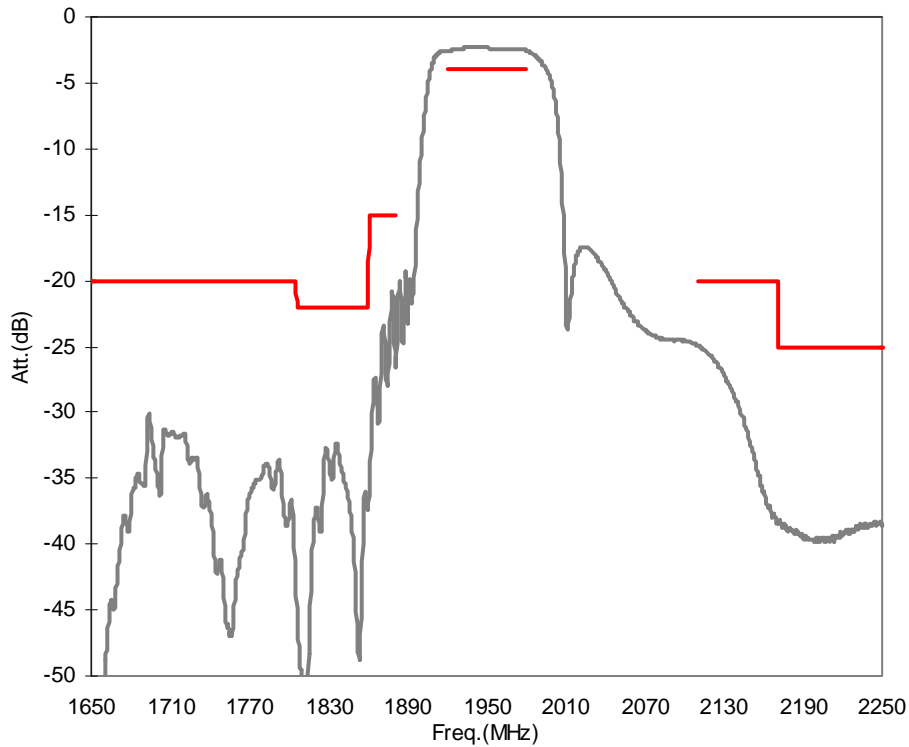


SAW Filter 1950.0MHz
Part No: MA07352

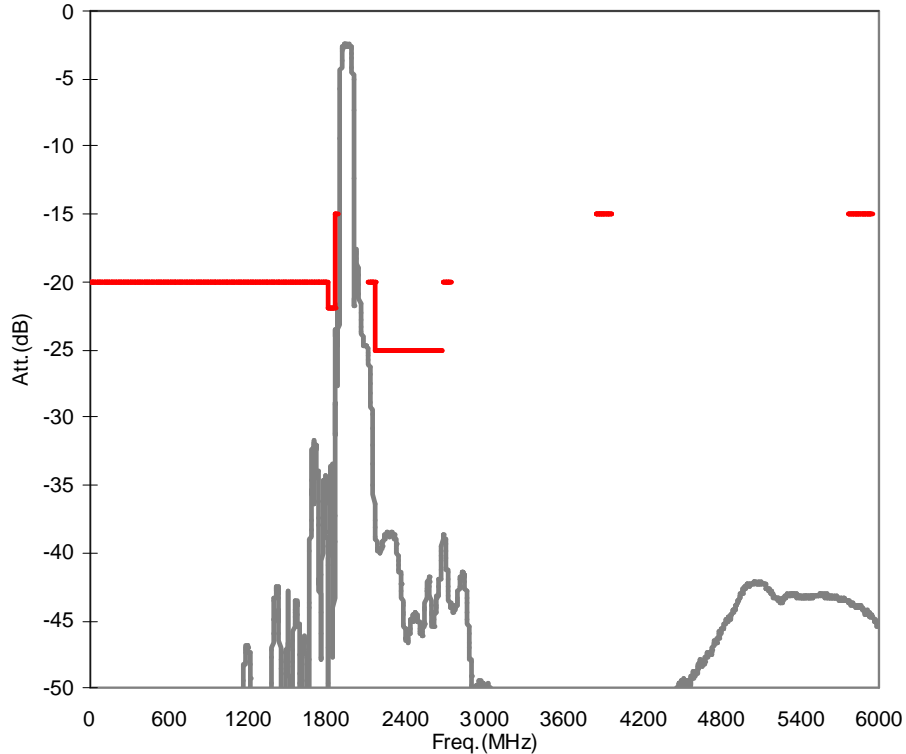
Model: TA0382A
Rev No: 1

F. FREQUENCY CHARACTERISTICS:

1. Transfer function (25°C)



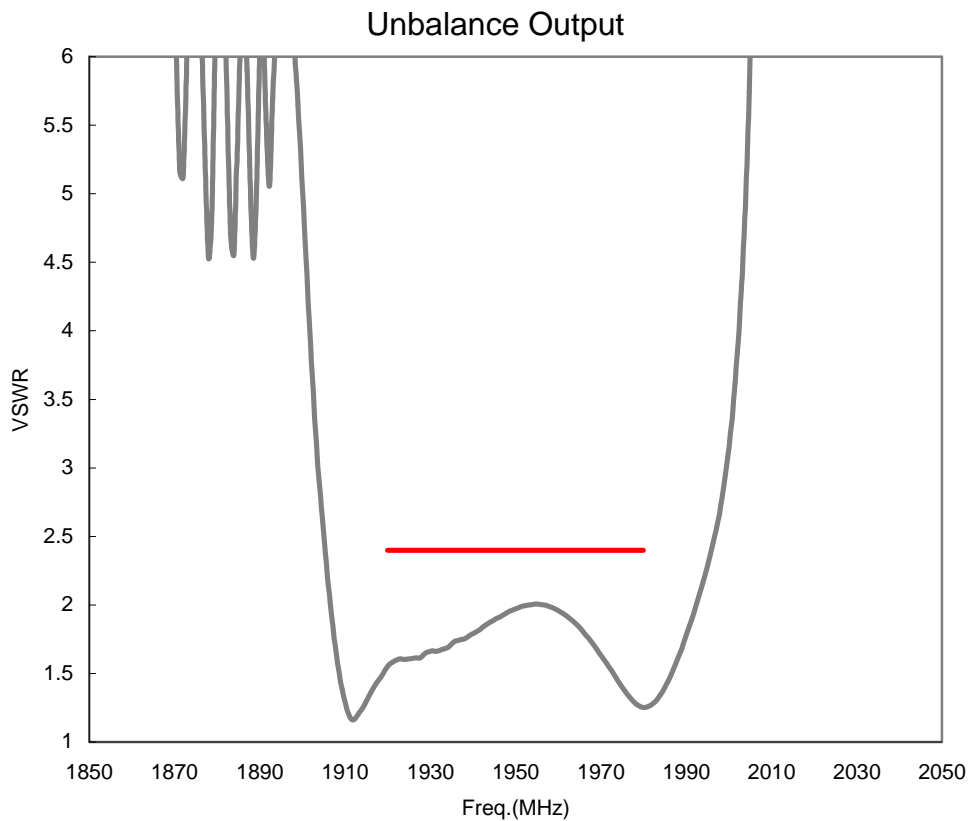
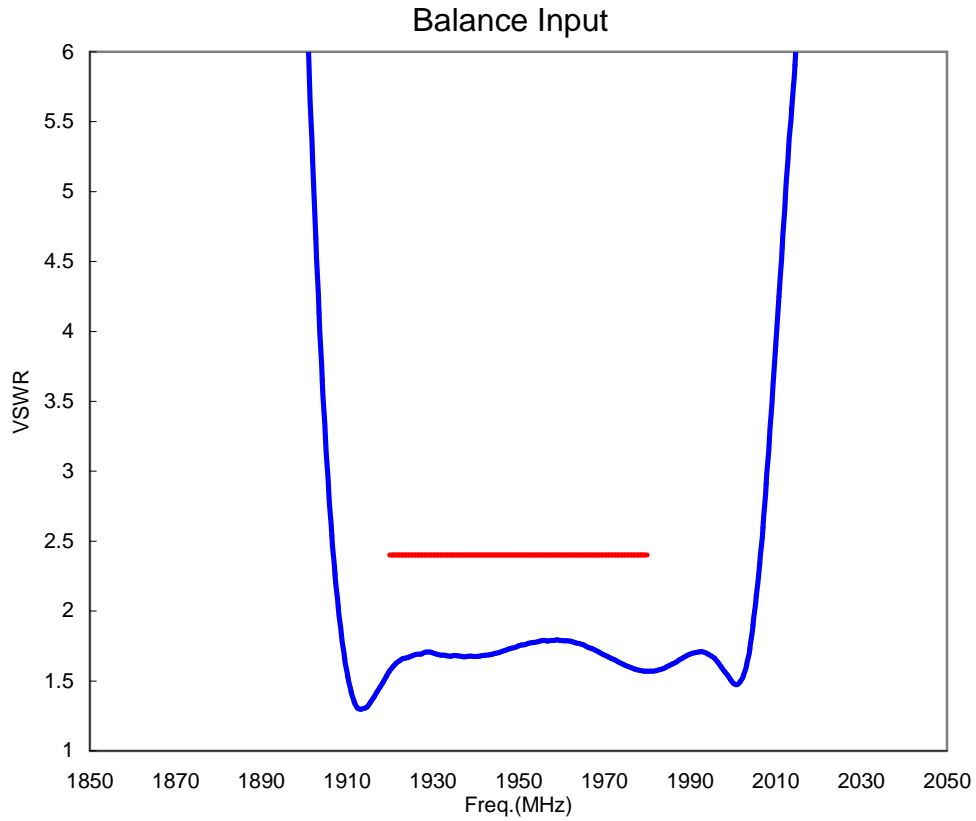
2. Wideband



SAW Filter 1950.0MHz
Part No: MA07352

Model: TA0382A
Rev No: 1

3. VSWR (25°C)

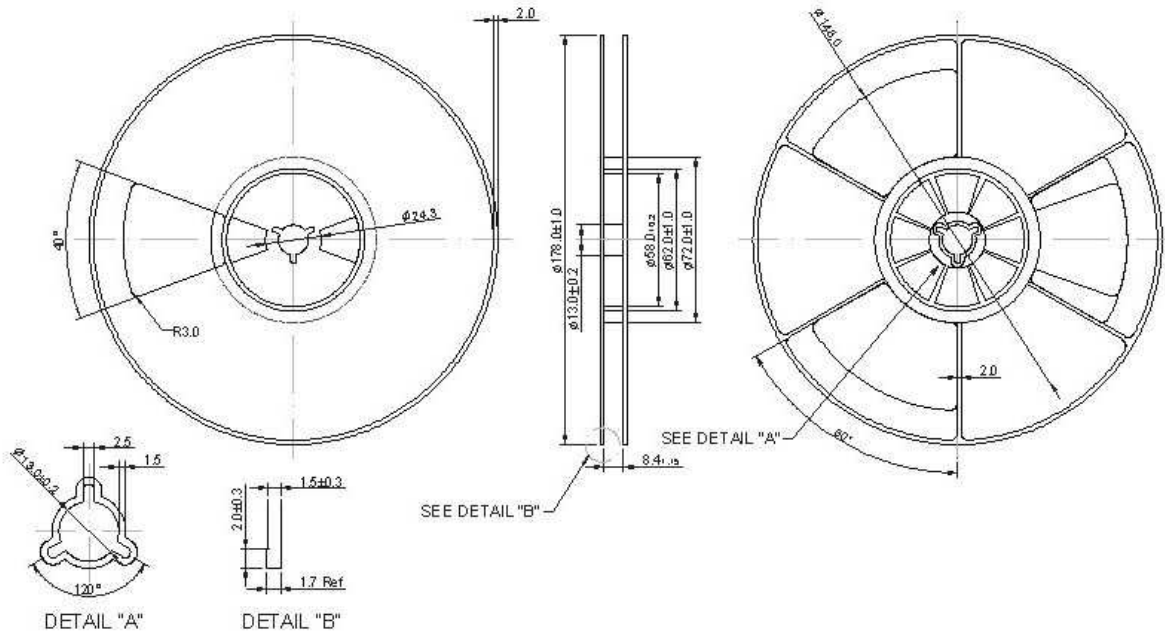


SAW Filter 1950.0MHz
Part No: MA07352

Model: TA0382A
Rev No: 1

G. PACKING:

1. REEL DIMENSION



2. TAPE DIMENSION

