

**SAW Resonator 433.92 MHz**  
**Part No: MA04205**

**Model: TC433ED-A**  
**REV NO.: 6**

**A. FEATURES:**

- 1-Port Resonator.

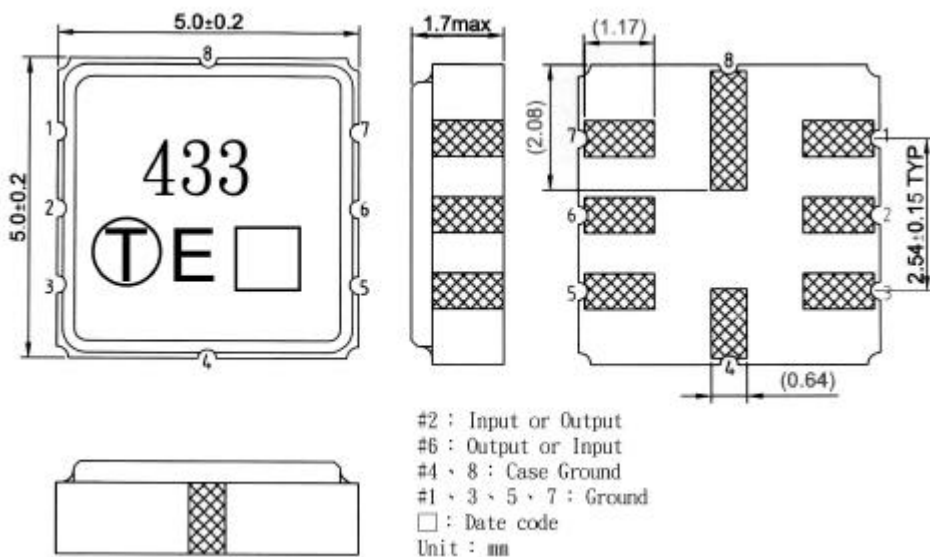
**B. MAXIMUM RATING:**

1. Input Power Level: 0 dBm
2. DC voltage: 12 V
3. Operating Temperature: -40°C to +85°C
4. Storage Temperature: -40°C to +85°C

**C. ELECTRICAL CHARACTERISTICS:**

Characteristic	Units	Minimum	Typical	Maximum
Center frequency <b>Fr</b>	<b>MHz</b>	433.845	433.92	433.995
Insertion Loss <b>IL</b>	<b>dB</b>	-	1.0	2.0
Unloaded Quality factor,		-	13000	-
Loaded Quality factor, <b>QL</b>		-	1500	-
Motional capacitance <b>C1</b>	<b>fF</b>	-	1.8	-
Motional inductance <b>L1</b>	<b>H</b>	-	73	-
Motional resistance <b>R1</b>	<b>Ohm</b>	-	13	23
Parallel capacitance <b>Co</b>	<b>pF</b>	-	3.0	-
Temp.coeff.	<b>ppm/c*2</b>	-	0.032	-
Turnover To	<b>deg.C</b>	20	-	50
Package size		SMD5X5X1.7mm		

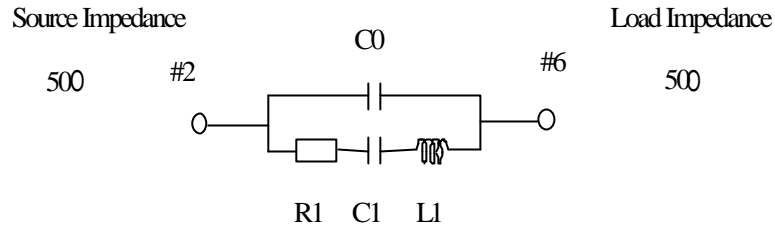
**D. OUTLINE DRAWING:**



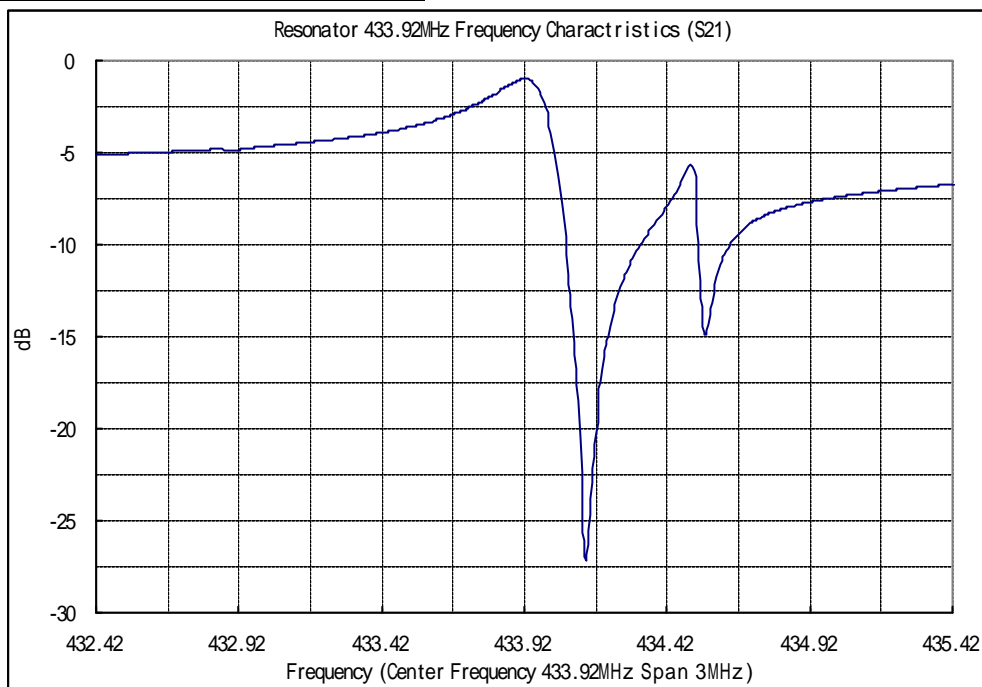
**SAW Resonator 433.92 MHz**  
**Part No: MA04205**

**Model: TC433ED-A**  
**REV NO.: 6**

**E. EQUIVALENT CIRCUIT:**

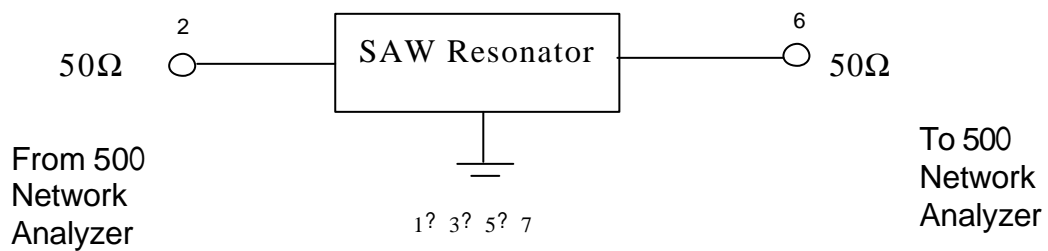


**F. FREQUENCY CHARACTERISTICS:**



**G. TEST CIRCUIT:**

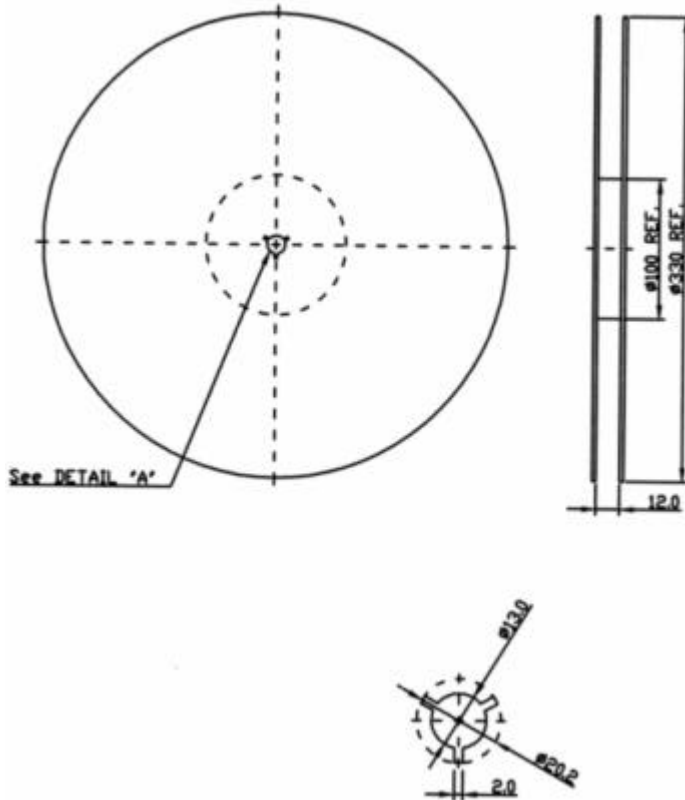
Network analyzer



**SAW Resonator 433.92 MHz**  
**Part No: MA04205**

**Model: TC433ED-A**  
**REV NO.: 6**

H. PACKING:  
1. REEL DIMENSION



2. TAPE DIMENSION

