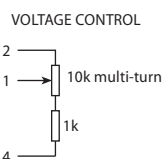


PIN	CONNECTION
1	Freq adjustment
2	Ref voltage out
3	RF output
4	Ground
5	Supply



## Features

- ▶ Temperature stability down to 1ppb
- ▶ Single 12V supply (12V ~ 30V optional)
- ▶ Standard US footprint & pin-out
- ▶ "Best in class" close-in phase noise option

## Standard Models

Freq	Specification	Ageing per day	Temperature stability	Part No
10.0MHz	HCD680/DRFN	< 1x10 <sup>-9</sup>	< 1x10 <sup>-8</sup> -20+70°C	MP02424
10.0MHz	HCD680/FTFN	< 2x10 <sup>-10</sup>	< 3x10 <sup>-9</sup> -20+70°C	MP02425

## Specifications

Parameters	Product	Option Codes
	HCD680	
<b>Frequency range:</b> 5.0 ~ 20.0MHz	■	
<b>Ageing per day (at despatch):</b> < 1x10 <sup>-9</sup> < 5x10 <sup>-10</sup> < 2x10 <sup>-10</sup>	■ □ ■	D E F
<b>Frequency stability:</b> < 1x10 <sup>-7</sup> per year (option D) < 2x10 <sup>-8</sup> per year (option F) < 1x10 <sup>-9</sup> per 10% change in V <sub>DD</sub> < 5x10 <sup>-10</sup> per 10% change in load	□ □ ■ ■	
<b>Temperature stability:</b> < 1x10 <sup>-8</sup> < 5x10 <sup>-9</sup> < 3x10 <sup>-9</sup> < 1x10 <sup>-9</sup>	■ □ ■ □	R S T V
<b>Operating temperature range:</b> -10 to +60°C -20 to +70°C -40 to +70°C	□ ■ □	C F G
<b>Storage temperature range:</b> -40 to +90°C	■	
<b>Output waveform:</b> Sine wave, 7dBm (±1dBm) into 50Ω Other options to +13dBm max	■ □	specify
<b>Frequency adjustment:</b> ±5x10 <sup>-7</sup> (typ) over +0.5 to +7.0V (sufficient for 10 years ageing min) Stabilised +7.0V supply provided	■	
<b>Supply voltage (V<sub>DD</sub>):</b> +12V (±0.5V) Other options from 12~30V	■ □	N specify
<b>Power consumption:</b> 5.0W max at switch on 1.2W typ when stabilised at 25°C	■ ■	
<b>Warm up:</b> < 1x10 <sup>-8</sup> after 8mins at +20°C	■	
<b>Allan deviation (ADEV), 1 sec:</b> < 5x10 <sup>-13</sup> (5.0MHz) < 1x10 <sup>-12</sup> (10.0MHz)	■ ■	
<b>Close-in phase noise (@ 5.0MHz):</b> < -110 dBc/Hz @ 1Hz, < -135 @ 10Hz < -123 dBc/Hz @ 1Hz, < -140 @ 10Hz < -150 dBc/Hz @ 100Hz	■ □ ■	Z
<b>Close-in phase noise (@ 10.0MHz):</b> < -95 dBc/Hz @ 1Hz, < -130 @ 10Hz < -108 dBc/Hz @ 1Hz, < -135 @ 10Hz < -145 dBc/Hz @ 100Hz	■ □ ■	Z
<b>Far-out phase noise (all freqs):</b> < -155 dBc/Hz @ 1kHz < -157 dBc/Hz @ 10kHz < -157 dBc/Hz @ 100kHz	■ ■ ■	
<b>Harmonics:</b> < -30dB wrt carrier	■	

■ Standard. □ Optional - Please specify required code(s) when ordering

## Ordering Information

Part No, or product name + option codes + frequency  
eg: **HCD680/FTFN 10.0MHz**  
Option code X (eg HCD680/X) denotes a custom specification.