



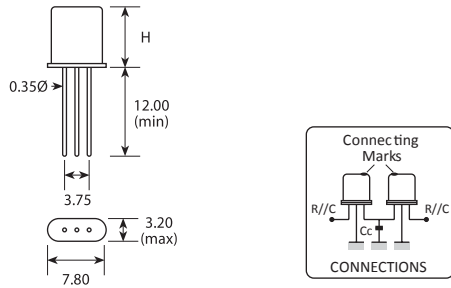
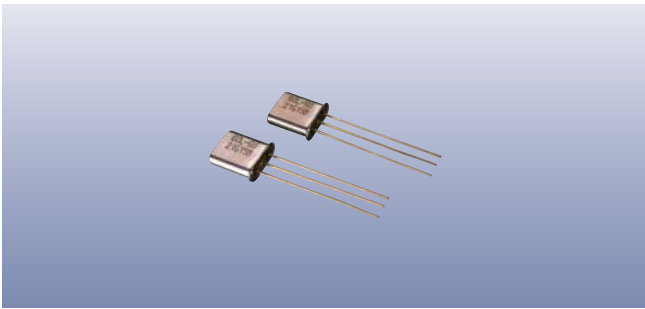
SSB Applications	Model Number	Centre Frequency (MHz)	Number of Poles	Pass Band dB @ kHz	Attenuation Band dB @ kHz		In-Band Ripple (dB)	Insertion Loss (dB)	Guaranteed Attenuation (dB @ kHz)		Termination (Ω // pF)	Package Style
	8G22D	8.700	8	6 \pm 1.1	60 \pm 2.4		2.0	6.0	80 \pm 10.0 \sim \pm 40.0	1000 // 15	F23/12B	
	9G22C	9.000	6	6 \pm 1.1	60 \pm 3.0		2.0	4.0	80 \pm 10.0 \sim \pm 40.0	700 // 18	F18/12P	
	9G22D	9.000	8	6 \pm 1.1	60 \pm 2.4		2.0	6.0	80 \pm 10.0 \sim \pm 40.0	700 // 18	F23/12B	
	9G24F	9.000	12	6 \pm 1.2	60 \pm 1.9		2.0	6.0	90 \pm 10.0 \sim \pm 40.0	1000 // 7	F38/12A	
	10G22D	10.6935	8	6 \pm 1.1	20 \pm 1.5	60 \pm 2.4	2.0	5.0		600 // 15	F36/10A	
	10G22D	10.700	8	6 \pm 1.1	60 \pm 2.4		2.0	6.0	80 \pm 10.0 \sim \pm 40.0	500 // 18	F23/12B	
	14G22C	14.000	6	6 \pm 1.1	60 \pm 3.0		2.0	6.0	80 \pm 10.0 \sim \pm 40.0	470 // 15	F18/12P	
	14G22D	14.000	8	6 \pm 1.1	60 \pm 2.4		2.0	6.0	80 \pm 10.0 \sim \pm 40.0	470 // 15	F23/12B	

General Applications	Model Number	Centre Frequency (MHz)	Number of Poles	Pass Band dB @ kHz	Attenuation Band dB @ kHz		In-Band Ripple (dB)	Insertion Loss (dB)	Guaranteed Attenuation (dB @ kHz)		Termination (Ω // pF)	Package Style
	9G4C	9.000	6	6 \pm 2.0	60 \pm 7.0		2.0	6.0	65 +350 \sim +1000 85 -200 \sim -1000	700 // 18	F38/12A	
	9G6A	9.000	2	3 \pm 3.0	18 \pm 12.5		0.5	1.5	35 +350 \sim +1000 50 -200 \sim -1000	2000 // 5.0	HC49/3L	
	9G6B	9.000	4	3 \pm 3.0	40 \pm 10.0		1.0	2.0	65 +350 \sim +1000 80 -200 \sim -1000	2000 // 4.0	HC49/3Lx2	
	9G6C	9.000	6	3 \pm 3.0	60 \pm 7.5		2.0	6.0	65 +350 \sim +1000 80 -200 \sim -1000	700 // 18		
	9G15A	9.000	2	3 \pm 7.5	18 \pm 25.0		1.0	2.0	35 +350 \sim +1000 50 -200 \sim -1000	3900	HC49/3L	
	9G15B	9.000	4	3 \pm 7.5	40 \pm 25.0		1.0	2.5	65 +350 \sim +1000 80 -200 \sim -1000	3900	HC49/3Lx2	
	9G20A	9.000	2	3 \pm 10.0	18 \pm 34.0		1.5	4.0	35 +350 \sim +1000 50 -200 \sim -1000	5600	HC49/3L	
	10G4C	10.700	6	6 \pm 2.0	60 \pm 6.5		2.0	4.0	65 +350 \sim +1000 80 -200 \sim -1000	1200 // 7.0	F18/12P	
	10G4D	10.700	8	6 \pm 2.0	60 \pm 5.0		2.0	6.0	90 \pm 200 \sim \pm 1000	910 // 10.0	F23/12B	
	10G6A	10.700	2	3 \pm 3.0	18 \pm 12.5		0.5	2.0	35 +350 \sim +1000 50 -200 \sim -1000	1200 // 5.0	HC49/3L	
	10G6B	10.700	4	3 \pm 3.0	40 \pm 10.0		1.0	2.5	65 +350 \sim +1000 80 -200 \sim -1000	1200 // 5.0	HC49/3Lx2	
	10G6C	10.700	6	3 \pm 3.0	40 \pm 6.0		2.0	4.0	65 +350 \sim +1000 80 -200 \sim -1000	1200 // 5.0	F18/12P	
	10G10A	10.700	2	3 \pm 5.0	20 \pm 20.0		0.5	1.5	35 +350 \sim +1000 50 -200 \sim -1000	2000	HC49/3L	
	10G10B	10.700	4	3 \pm 5.0	40 \pm 17.5		1.5	2.5	65 +350 \sim +1000 80 -200 \sim -1000	2000 // 3.0	HC49/3Lx2	
10G13D	10.700	8	6 \pm 6.5	60 \pm 14.0		2.0	4.0	90 \pm 200 \sim \pm 1000	3100	F23/12B		

10.7MHz	Model Number	Centre Frequency (MHz)	Number of Poles	Pass Band dB @ kHz	Attenuation Band dB @ kHz		In-Band Ripple (dB)	Insertion Loss (dB)	Guaranteed Attenuation (dB @ kHz)		Termination (Ω // pF)	Package Style
	X10G7D1	10.700	8	3 \pm 3.75	70 \pm 8.75	90 \pm 12.5	2.0	4.0	90 \pm 12.5 \sim \pm 300	910 // 25.0	F38/18E	
	X10G7D2	10.700	8	3 \pm 3.75	70 \pm 8.75	90 \pm 12.5	2.0	4.0	90 \pm 12.5 \sim \pm 300	910 // 25.0	F38/18F	
	X10G12D1	10.700	8	3 \pm 6.0	70 \pm 14.0	90 \pm 20.0	2.0	3.5	90 \pm 20.0 \sim \pm 300	910 // 25.0	F38/18E	
	X10G12D2	10.700	8	3 \pm 6.0	70 \pm 14.0	90 \pm 20.0	2.0	3.5	90 \pm 20.0 \sim \pm 300	910 // 25.0	F38/18F	
	X10G15D1	10.700	8	3 \pm 7.5	70 \pm 17.5	90 \pm 25.0	2.0	3.5	90 \pm 25.0 \sim \pm 300	910 // 25.0	F38/18E	
X10G15D2	10.700	8	3 \pm 7.5	70 \pm 17.5	90 \pm 25.0	2.0	3.5	90 \pm 25.0 \sim \pm 300	910 // 25.0	F38/18F		

21.4MHz	Model Number	Centre Frequency (MHz)	Number of Poles	Pass Band dB @ kHz	Attenuation Band dB @ kHz		In-Band Ripple (dB)	Insertion Loss (dB)	Guaranteed Attenuation (dB @ kHz)		Termination (Ω // pF)	Package Style
	X21G7D1	21.400	8	3 \pm 3.75	70 \pm 9.0	90 \pm 12.5	2.0	4.0	90 \pm 12.5 \sim \pm 300	910 // 15.0	F38/18E	
	X21G7D2	21.400	8	3 \pm 3.75	70 \pm 9.0	90 \pm 12.5	2.0	4.0	90 \pm 12.5 \sim \pm 300	910 // 15.0	F38/18F	
	X21G7DA	21.400	8	3 \pm 3.75	65 \pm 9.0	90 \pm 12.5	2.0	4.5	90 \pm 12.5 \sim \pm 300	470 // 15.0	F25/14B	
	X21G12D1	21.400	8	3 \pm 6.0	70 \pm 14.0	90 \pm 20.0	2.0	3.5	90 \pm 20.0 \sim \pm 300	910 // 15.0	F38/18E	
	X21G12D2	21.400	8	3 \pm 6.0	70 \pm 14.0	90 \pm 20.0	2.0	3.5	90 \pm 20.0 \sim \pm 300	910 // 15.0	F38/18F	
	X21G12DA	21.400	8	3 \pm 6.0	65 \pm 14.0	90 \pm 20.0	2.0	4.0	90 \pm 20.0 \sim \pm 300	470 // 15.0	F25/14B	
	X21G15D1	21.400	8	3 \pm 7.5	70 \pm 17.5	90 \pm 25.0	2.0	3.5	90 \pm 25.0 \sim \pm 300	910 // 15.0	F38/18E	
	X21G15D2	21.400	8	3 \pm 7.5	70 \pm 17.5	90 \pm 25.0	2.0	3.5	90 \pm 25.0 \sim \pm 300	910 // 15.0	F38/18F	
	X21G15DA	21.400	8	3 \pm 7.5	65 \pm 17.5	90 \pm 25.0	2.0	4.0	90 \pm 25.0 \sim \pm 300	470 // 15.0	F25/14B	

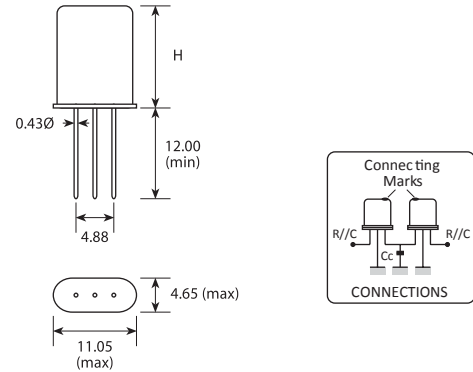
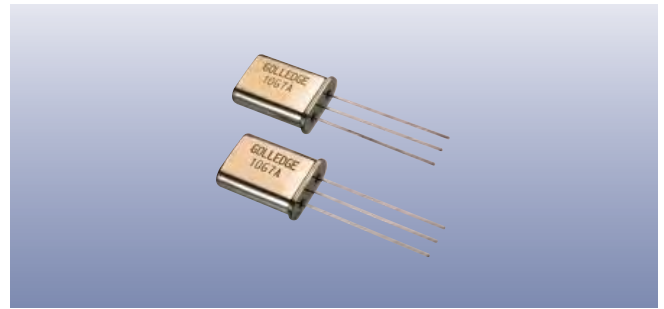
UM-1/3L & UM-5/3L



Package	Height H
UM-1/3L	8.00 max
UM-5/3L	6.00 max

UM-1/3Lx2 is a pair of UM-1/3Ls connected as shown.

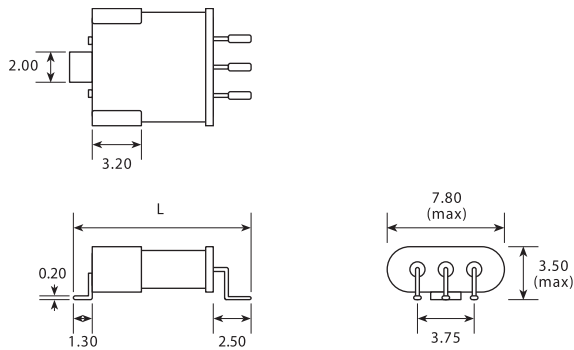
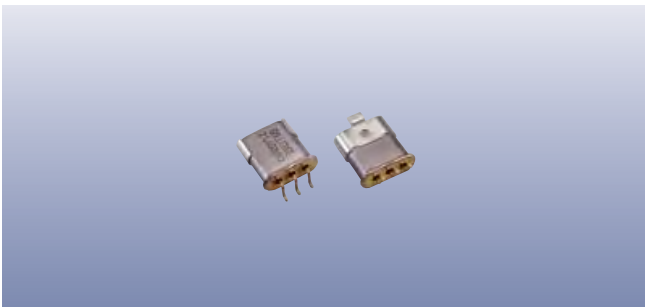
HC49/3L & HC49T/3L



Package	Height H
HC49	13.46 max
HC49T	11.70 max

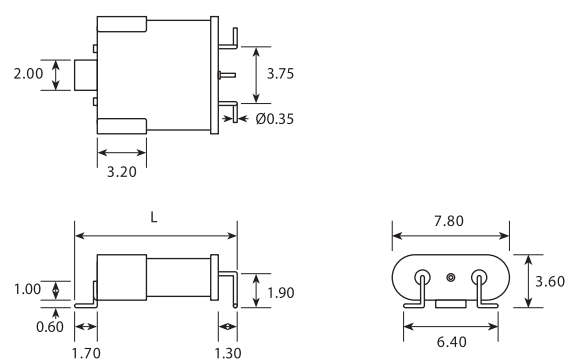
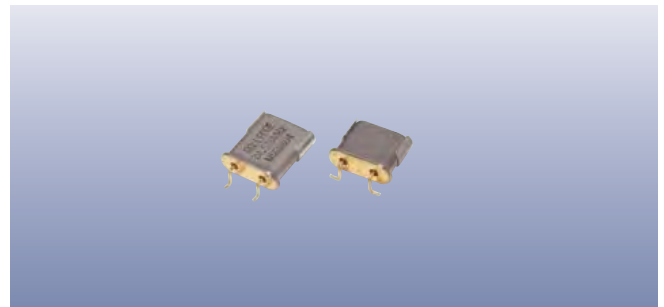
HC49/3Lx2 is a pair of HC49/3Ls connected as shown.

UM-1JN/3L & UM-5JN/3L



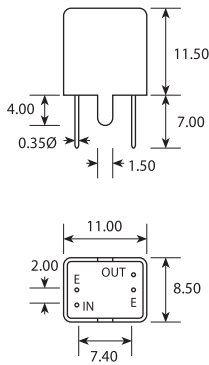
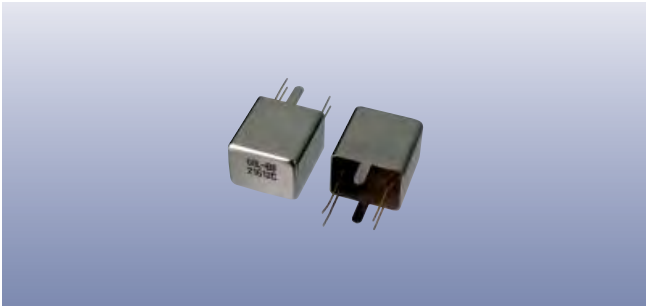
Package	Length L
UM-1JN/3L	12.50 max
UM-5JN/3L	10.50 max

UM-1JC/3L & UM-5JC/3L

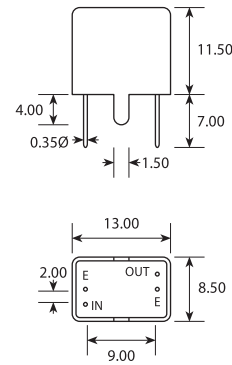
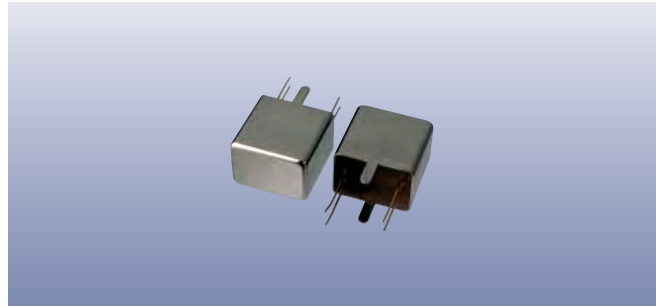


Package	Length L
UM-1JC/3L	11.10 max
UM-5JC/3L	9.00 max

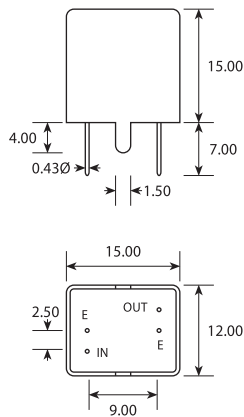
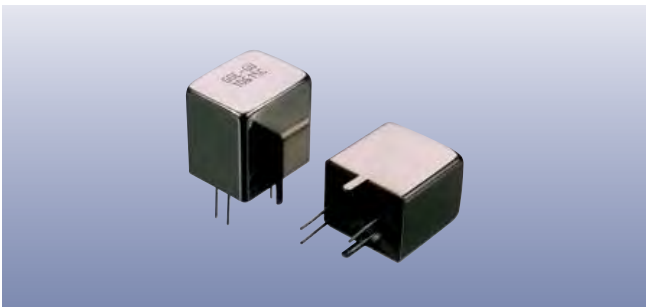
F11/8A



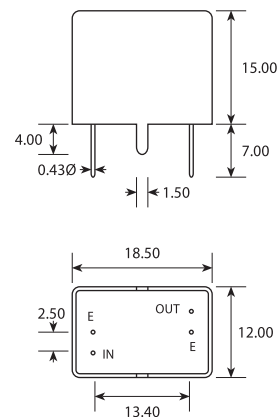
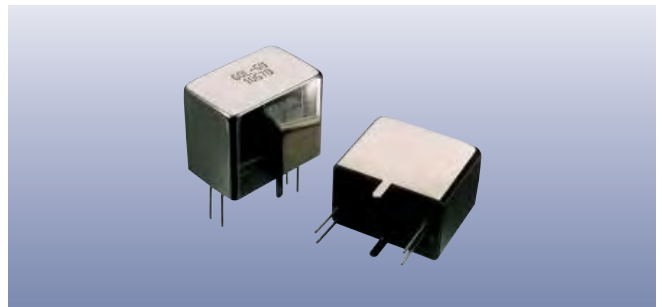
F13/8A



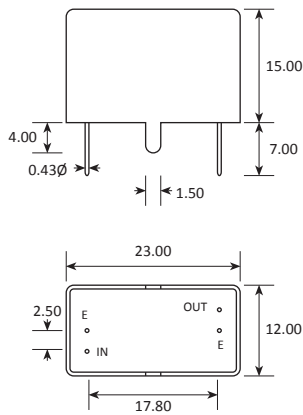
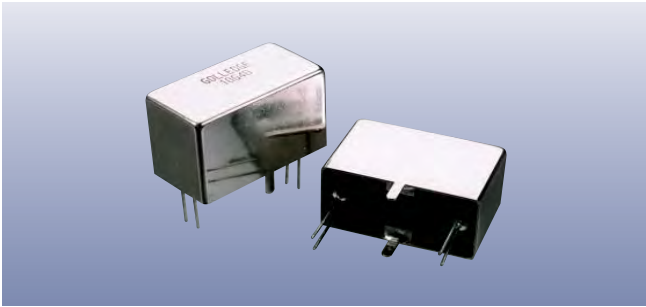
F15/12B



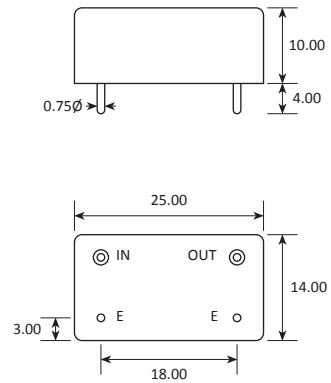
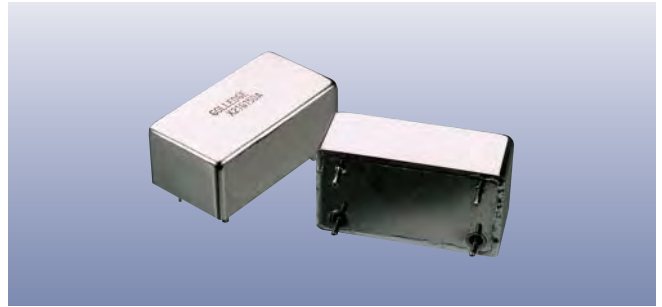
F18/12P



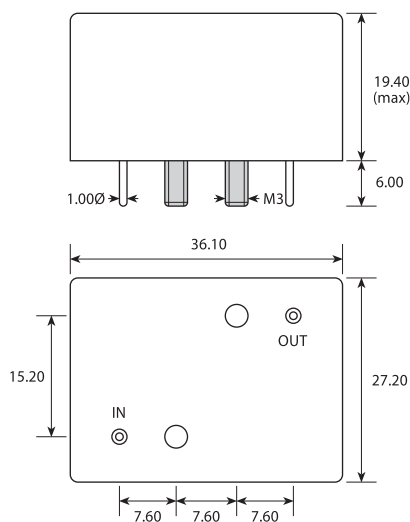
F23/12B



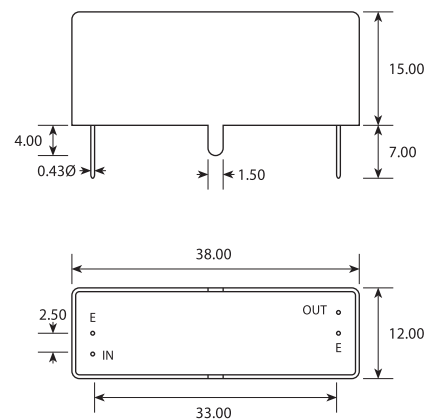
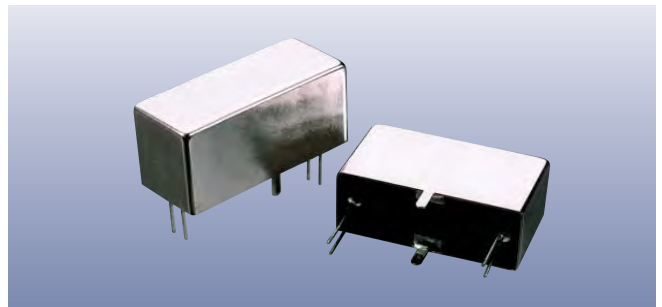
F25/14B



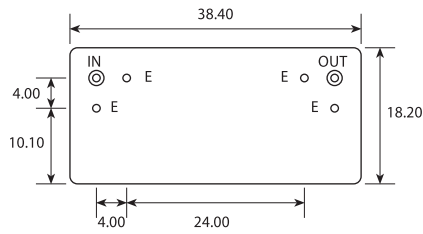
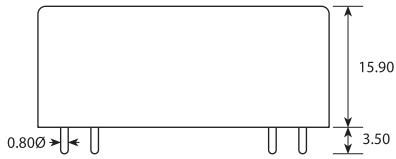
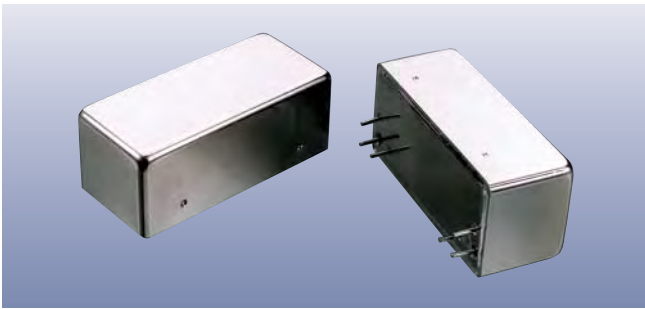
F36/27M



F38/12A



F38/18E



F38/18F

