

## Product Description

Description:	22.57920MHz GXO-7506L/A SM Oscillator
Product family:	GXO-7506
Category:	SM Oscillator
Order code:	MP07691

## Features

- ▶ Excellent phase noise & jitter characteristics
- ▶ Enable / disable tristate function

## Additional Information

For further information regarding packaging, construction, material composition, soldering profile and environment, please refer to **GXO-7506 Product Information sheet**

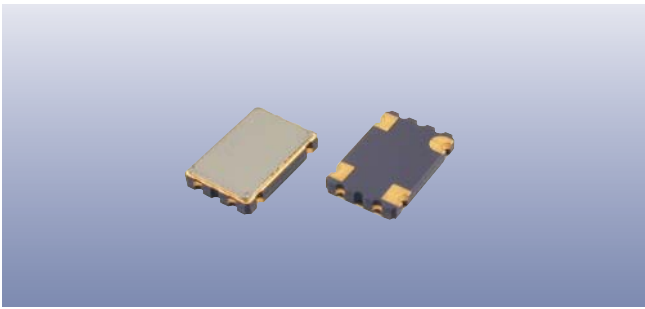
For dimensions, refer to package drawing: **D0135-B**

## Electrical Specifications

Parameter	Value	Notes
Nominal frequency:	22.57920MHz	
Frequency stability:	±25ppm	Inclusive of calibration @25°C, operating temperature range, supply voltage change, load change, shock & vibration.
Operating temperature range:	-40 to +85°C	
Storage temperature range:	-55 to +125°C	
Supply voltage (V <sub>DD</sub> ):	+3.3V	±10%
Supply current:	20mA max	
Driving ability:	15pF CMOS	
Logic levels:	'0' level = 10%V <sub>DD</sub> max '1' level = 90%V <sub>DD</sub> min	
Start up time:	5ms max	
Waveform symmetry:	45:55% max	@50% V <sub>DD</sub>
Rise / fall time:	5ns max	
Enable / disable function:	Tristate	Control via pad 1
Phase jitter RMS:	0.04ps typ	12kHz ~ 5.0MHz. For ultimate performance, a high frequency decoupling capacitor should be connected between supply and ground as close to the oscillator supply pad as possible. Low frequency decoupling should be placed next to the supply source.
Phase noise:	-101dBc/Hz @10Hz typ -132dBc/Hz @100Hz typ -155dBc/Hz @1kHz typ -166dBc/Hz @10kHz typ -174dBc/Hz @100kHz typ -175dBc/Hz @1MHz typ -175dBc/Hz @5MHz typ	

## Enable / Disable Function

Input (pad 1)	Output (pad 3)
Open	Enabled
'1' level	Enabled
'0' level	High Impedance



## Construction

- ▮ Ceramic body with gold-plated pads
- ▮ Metal lid, seam sealed

## Composition



This product is lead-free, and is fully compliant with current RoHS directives



## Packaging & Handling

Production quantities supplied on T&R, 2k pcs per reel.  
Small quantities may be supplied on tape (no reel), or in bulk.



◆ Static sensitive product. Observe proper handling precautions

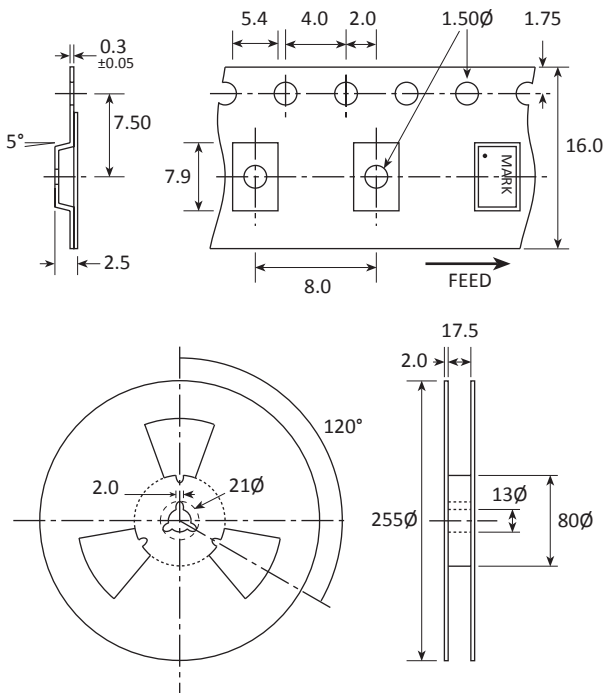
## Marking

FREQUENCY	DC
PARTNO	

- Pin 1
- Marking type: Laser
- DC = Date code in YM, eg "EC" = Mar 2015

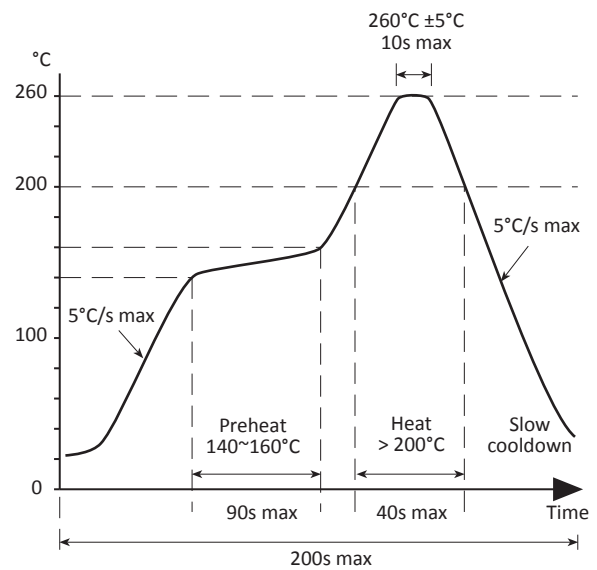
	A	B	C	D	E	F	G	H	J	K	L	M
Y	1	2	3	4	5	6	7	8	9	0		
M	Jan	Feb	Mar	Apr	May	Jun	Jul	Aug	Sep	Oct	Nov	Dec

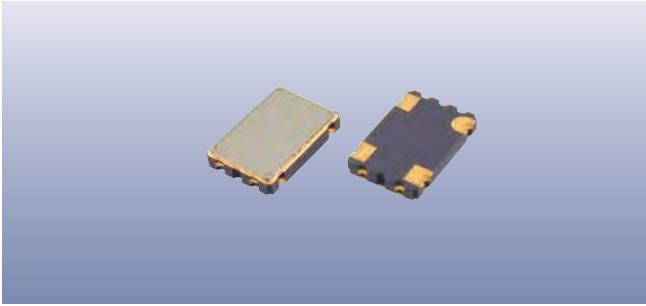
## Tape & Reel Specification



Not to scale. Dimensions in mm. Tolerances ±0.1mm unless otherwise stated.

## Soldering Profile





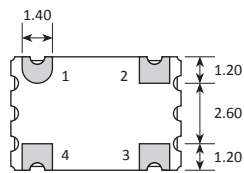
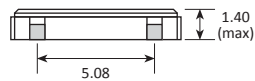
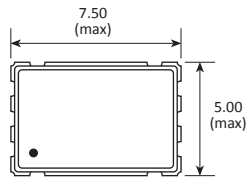
## Product Family

GXO-U108, GXO-7506

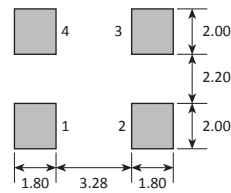
## Construction

- ▮▮▮▮ Ceramic body with gold-plated pads
- ▮▮▮▮ Metal lid, seam sealed

## Dimensions (mm)



PAD	CONNECTION
1	Enable/Disable
2	Ground
3	Output
4	Supply



TOP VIEW